

# JASMINE II – EVERYDAY BATHS

inches (mm)

72 x 36 1/8 x 21 (1830 x 920 x 535) • Fax on Demand #5056

SOAKER MODEL #1572420

WHIRLPOOL MODEL #1572421



## FEATURES

- Island bath
- Integral arm rest
- Ergonomic backrest
- Integral acrylic grab bar
- Molded toiletry shelves
- Slip-resistant textured bottom
- Universal drain
- Gelcoat surface
- 5-year limited warranty

### Whirlpool Features:

- .75hp motor
- 4 adjusta-flow whirlpool jets
- Color matched or clear trim
- Pneumatic on/off control
- Advanced safety suction system

## OPTIONS

- 72" skirt
- In-line heater (whirlpool models)
- Mood light (whirlpool models)
- Designer drain, waste & overflow

## AQUATIC ADVANTAGE

- National distribution
- 5 manufacturing facilities
- Private fleet
- Centralized customer service
- Field support
- 24-hour fax-on-demand

## COLOR & TRIM OPTIONS

Stock	Premium
Almond (C)	Black (C)
Biscuit (C)	Mexican Sand* (NA)
Bone (C)	Sand Bar* (NA)
Linen (C)	
Sterling Silver (C)	
White (C)	

C = color matched trim

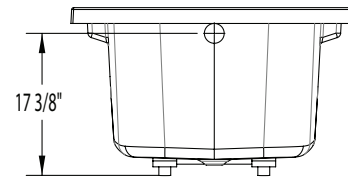
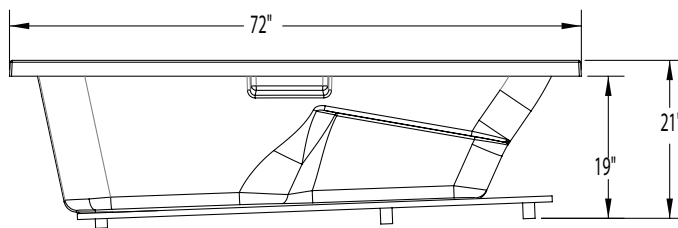
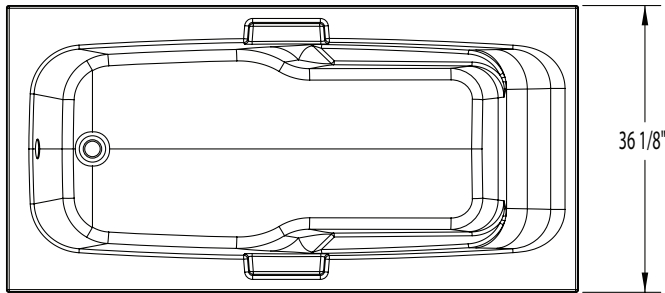
NA = not applicable

\* color not available for whirlpool models



# JASMINE II

72 x 36 1/8 x 21 (1830 x 920 x 535)  
inches (mm)



**FEATURES** lbs (kg) Dimensional Tolerance  $\pm \frac{3}{16}$ ". Dimensions needed for site preparation should be measured from the unit. Aquatic assumes no responsibility for preparatory work.

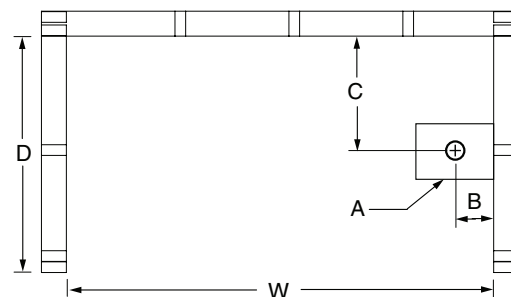
Model #	Material	Jets	Motor	Controls	Drain	Net Wt.	Pkg. Wt.
Soaker #1572420	Gelcoat	0	-	-	Universal	68 (31)	73 (33)
Whirlpool #1572421	Gelcoat	4	0.75 HP	Pneumatic	Universal	118 (54)	123 (56)

## DIMENSIONS

Specifications	inches (mm)
Width: Overall / Net	72 (1830)
Depth: Overall / Net	36 1/8 (920) / 36 1/8 (920)
Height: Overall / Net	21 (535)
Enclosure Opening	-
Skirt Height	-
Drain Rough-In (from Back Wall)	18 1/8 (460)
Drain Rough-In (from Side Wall)	2 1/2 (65)
Drain: Diameter / Clearance	2 (50) / 3/8 (10)

## FRAMING DIMENSIONS inches (mm)

Type	D Depth	W Width	H Height	A	B	C
Island	34 (865)	70 (1780)	19 (485)	Box Out	2 1/2 (65)	18 1/8 (460)



## SUMP DATA

Top of Drain to Bottom of Overflow	Capacity to Overflow gal (ltr)	Min. Operating Capacity gal (ltr)	WIDTH @ centerline		DEPTH @ centerline	
			Top	Bottom	Top	Bottom
15 (380)	80 (303)	60 (227)	65 (1650)	49 (1245)	26 1/2 (675)	22 (560)