

2603CTH – ACCESSIBLE TUB-SHOWERS

inches (mm)

Interior: 56 x 30 ¼ x 73 (1420 x 770 x 1855)

Exterior: 60 x 33 ¼ x 74 ¼ (1525 x 845 x 1885)

Fax on Demand #6012



AQUATIC ADVANTAGE

- National distribution
- 5 manufacturing facilities
- Private fleet
- Centralized customer service
- Field support
- 24-hour fax-on-demand

COLOR & TRIM OPTIONS

Stock	Premium
Almond	Black
Biscuit	Mexican Sand
Bone	Sandbar
Linen	
Sterling Silver	
White	

**Additional custom colors available.
(Contact Customer Service)

FEATURES

- Gelcoat surface
- 16" (405 mm) skirt
- Molded toiletry shelf
- Smooth tile
- LH or RH drain
- 5-year limited warranty

OPTIONS

- Grab bars
- Removable seat
- Hand-held shower assembly with slide bar
- Pressure balancing mixing valve
- Curtain rod and/or shower curtain

CODE COMPLIANCE

- ADA
- FHA
- ICC/ANSI A117.1
- ANSI Z124.1.2
- HUD UM73a
- CAN/CSA-B651-04
- CAN/CSA-B45-02

**Code compliant when fully equipped and installed according to guidelines.



Aquatic products may be specified as Lasco Bathware.



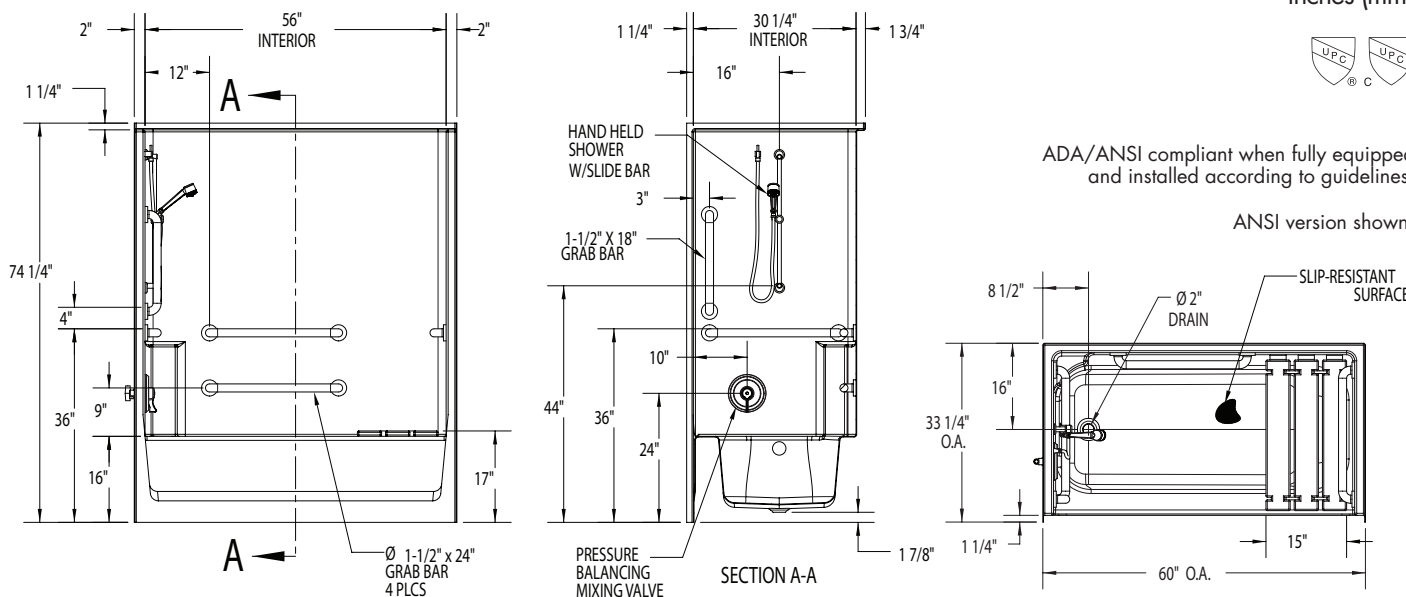
2603CTH

Interior: 56 x 30 1/4 x 72 (1420 x 770 x 1805)
 Exterior: 60 x 33 1/4 x 73 1/4 (1525 x 845 x 1860)
 inches (mm)



ADA/ANSI compliant when fully equipped and installed according to guidelines.

ANSI version shown.



FEATURES lbs (kg) Dimensional Tolerance $\pm \frac{3}{8}$ ". Dimensions needed for site preparation should be measured from the unit. Aquatic assumes no responsibility for preparatory work.

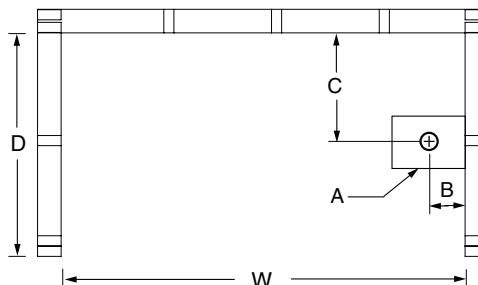
Type and Model #	Material	Wall Finish	Pieces	Drain	Skirt Height	Net Wt.	Pkg. Wt.
Tub-shower #2603CTH	Gelcoat	Smooth tile	1	LH/RH	16" (405mm) skirt	126 (55)	136 (60)

DIMENSIONS

Specifications	inches (mm)
Width: Overall / Net	60 (1525) / 56 (1420)
Depth: Overall / Net	33 1/4 (845) / 30 1/4 (770)
Height: Overall / Net	74 1/4 (1885) / 73 (1855)
Enclosure Opening:	56 (1420)
Skirt Height:	16 (405)
Drain Rough-In (from Back Wall)	8 1/2 (215)
Drain Rough-In (from Side Wall)	16 (405)
Drain: Diameter / Clearance	2 (50) / 7/8 (20)

FRAMING DIMENSIONS inches (mm)

Type	D Depth	W Width	H Height	A	B	C
Alcove	33 1/4 (845)	60 1/8 (1525)	-	Box Out	8 1/2 (215)	16 (405)



SUMP DATA

Top of Drain to Bottom of Overflow	Capacity to Overflow gal (ltr)	WIDTH @ centerline		DEPTH @ centerline	
		Top	Bottom	Top	Bottom
12 (305)	37 (140)	22 1/4 (565)	20 (510)	53 1/4 (1350)	44 (1120)