

6030AIS – BUILDERS' CHOICE

inches (mm)

60 x 30 x 17 (1525 x 760 x 430) • Fax on Demand #5110



FEATURES

- Alcove bath
- Ergonomic backrest
- Integral skirt
- Slip-resistant textured bottom
- Standard skirt height
- Left or right hand drain
- Acrylic surface
- 5-year limited warranty

AQUATIC ADVANTAGE

- National distribution
- 5 manufacturing facilities
- Private fleet
- Centralized customer service
- Field support
- 24-hour fax-on-demand

COLOR & TRIM OPTIONS

Stock

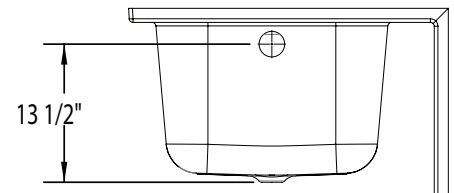
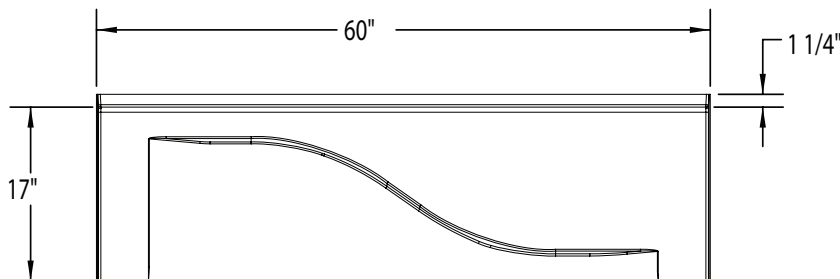
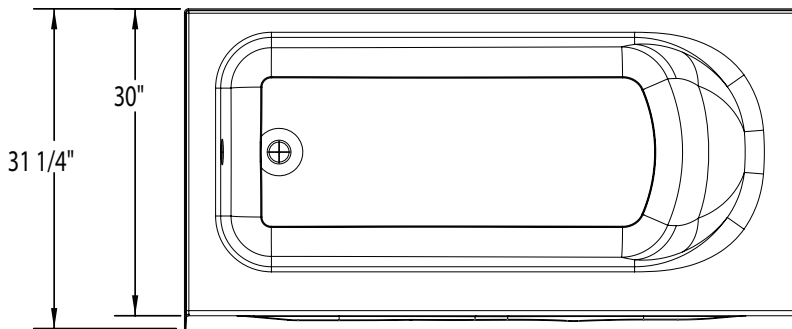
Almond (C)
Biscuit (C)
Bone (C)
Linen (C)
Sterling Silver (C)
White (C)

C = color matched trim



6030AIS

60 x 30 x 17 (1525 x 760 x 430)
inches (mm)



FEATURES lbs (kg) Dimensional Tolerance $\pm \frac{3}{8}$ ". Dimensions needed for site preparation should be measured from the unit. Aquatic assumes no responsibility for preparatory work.

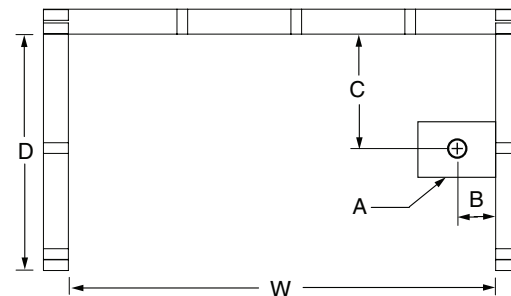
| Model # | Material | Jets | Motor | Controls | Drain | Net Wt. | Pkg. Wt. |
|-----------------|----------|------|-------|----------|----------|---------|----------|
| Soaker #6030AIS | Acrylic | - | - | - | LH or RH | 65 (29) | 75 (34) |

DIMENSIONS

| Specifications | inches (mm) |
|---------------------------------|-------------------------|
| Width: Overall / Net | 60 (1525) |
| Depth: Overall / Net | 31 1/4 (795) / 30 (760) |
| Height: Overall / Net | 18 1/4 (465) / 17 (430) |
| Enclosure Opening | - |
| Skirt Height | 17 (430) |
| Drain Rough-In (from Back Wall) | 14 (355) |
| Drain Rough-In (from Side Wall) | 2 3/4 (70) |
| Drain: Diameter / Clearance | 2 (50) / 1 1/4 (30) |

FRAMING DIMENSIONS inches (mm)

| Type | D Depth | W Width | H Height | A | B | C |
|--------|--------------|---------------|--------------|---------|------------|----------|
| Alcove | 31 1/4 (795) | 60 1/8 (1525) | 16 1/2 (420) | Box Out | 2 3/4 (70) | 14 (355) |



SUMP DATA

| Top of Drain to Bottom of Overflow | Capacity to Overflow gal (ltr) | Min. Operating Capacity gal (ltr) | WIDTH @ centerline | | DEPTH @ centerline | |
|------------------------------------|--------------------------------|-----------------------------------|--------------------|----------|--------------------|--------------|
| | | | Top | Bottom | Top | Bottom |
| 11 3/4 (300) | 53 (200) | - | 51 3/4 (1315) | 44 (120) | 22 3/8 (570) | 20 3/8 (515) |