

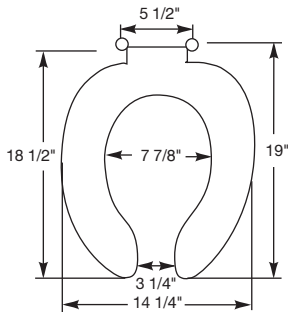


M E D I C - A I D[®] S E A T S

MODEL 2L2155T

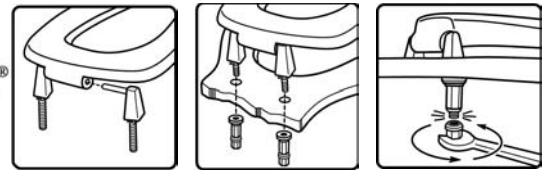
- 2" LIFT SEAT
- ELONGATED SEAT, OPEN FRONT LESS COVER
- HEAVY DUTY PLASTIC
- DURAGUARD[®] ANTIMICROBIAL AGENT
- STA-TITE[®], COMMERCIAL FASTENING SYSTEM[™]

DuraGuard[®]
ANTIMICROBIAL



Ring thickness is 13/16"
Ring thickness including the bumper is 2"
Height of the seat is 3-1/4"

STATITE[®]



Assemble hinges.

Finger-tighten fastening nuts.

Using wrench, tighten until lower portion shears off.



STA-TITE[®], COMMERCIAL FASTENING SYSTEM[™], ONE-PIECE INTEGRATED NUT AND WASHER



EXTERNAL CHECK HINGE WITH 300 SERIES STAINLESS STEEL BOLTS



ADDITIONAL 2" OF HEIGHT