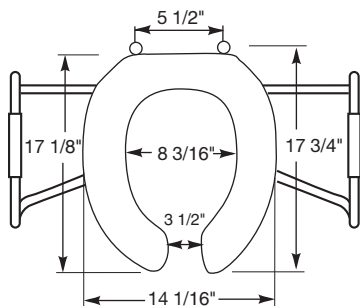
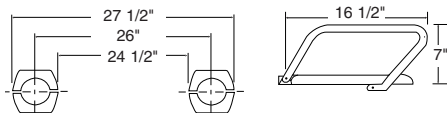




DuraGuard®
ANTIMICROBIAL



Ring thickness is 3/4"
Ring thickness including the bumper is 1-1/16"
Height of the seat with cover is 2-1/4"



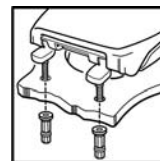
M E D I C - A I D ® S E A T S

MODEL MA2150T

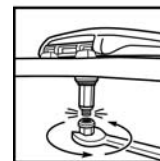
- ELONGATED SEAT, OPEN FRONT WITH COVER
- HEAVY DUTY PLASTIC
- DURAGUARD® ANTIMICROBIAL AGENT
- STAINLESS STEEL SIDE ARMS
- STA-TITE®, COMMERCIAL FASTENING SYSTEM™

Seats shall be No. MA2150T as manufactured by Church Seats. Seats shall be open front with cover for elongated bowl and injection molded of heavy duty solid plastic. Seats shall contain DuraGuard®, an antimicrobial agent. Factory-assembled "Safety-Side" arms shall be heavy-duty stainless steel and feature textured plastic handgrips with finger grooves. Seat shall feature large molded-in bumpers. Seats shall have STA-TITE®, Commercial Fastening System™, featuring 300 Series stainless steel posts and pintles. Color to be white.

STA-TITE®



Finger-tighten
fastening nuts.



Using wrench,
tighten until lower
portion shears off.



STA-TITE®, COMMERCIAL
FASTENING SYSTEM™,
ONE-PIECE INTEGRATED
NUT AND WASHER



EXTERNAL CHECK HINGE
WITH 300 SERIES
STAINLESS STEEL BOLTS



HEAVY DUTY "SAFETY SIDE" ARMS WITH
TEXTURED HANDGRIPS