



a Geberit company

2100 South Clearwater Drive
Des Plaines, IL 60018
Phone: 847-803-5000
Fax: 847-803-5454
www.chicagofaucets.com

FOR TECHNICAL ASSISTANCE
1-800-TEC-TRUE (1-800-832-8783)

REPAIR PARTS

BY: JAR DATE: 03-10-11

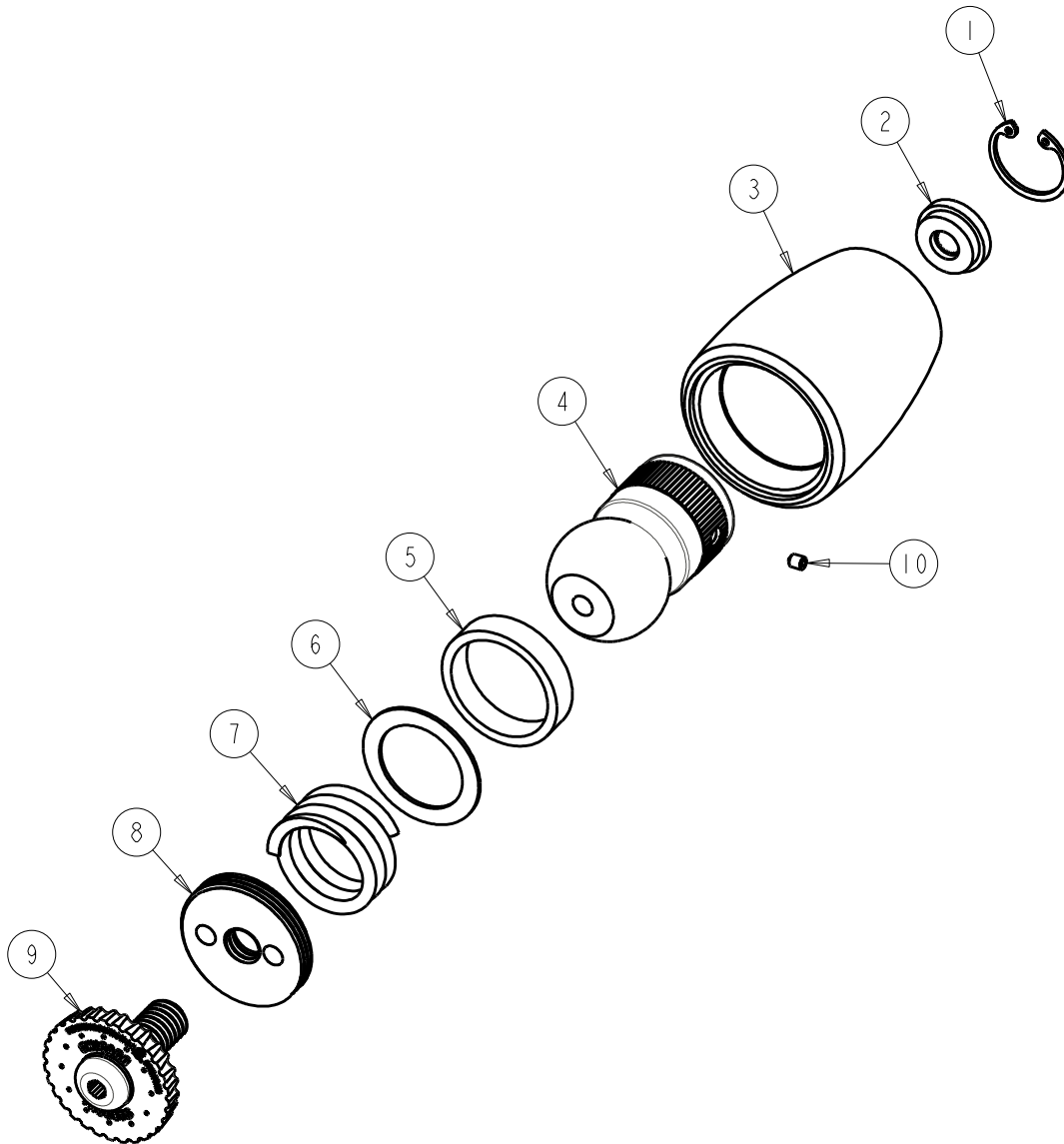
CHK: *JAR* REV: 01-08-13

FITTING NO.

620-VP CP

SUBMITTED MODEL NO.

ITEM NO.



ITEM	PART NO.	DESCRIPTION
1	-----	INTERNAL RETAINING RING
2	-----	FLOW REGULATOR, 2.5 GPM MAX
3	-----	SHOWER BODY (NOT SOLD SEPARATELY)
4	-----	SHOWER BALL (NOT SOLD SEPARATELY)
5	620-138JKNF	RUBBER WASHER
6	620-039JKRBF	BRASS WASHER
7	620-041JKNF	COMPRESSION SPRING
8	620-140JKNF	RETAINER
9	620-036KJKRCF	FACE SPRAY 2.5 GPM
10	777-013JKNF	SCREW, SET 6-32 X 1/8