

CHICAGO FAUCETS
a Geberit company

2100 South Clearwater Drive
Des Plaines, IL 60018
Phone: 847-803-5000
Fax: 847-803-5454
www.chicagofaucets.com

REPAIR PARTS

BY: JAR DATE: 01-02-08
CHK: [Signature] REV: 11-21-11

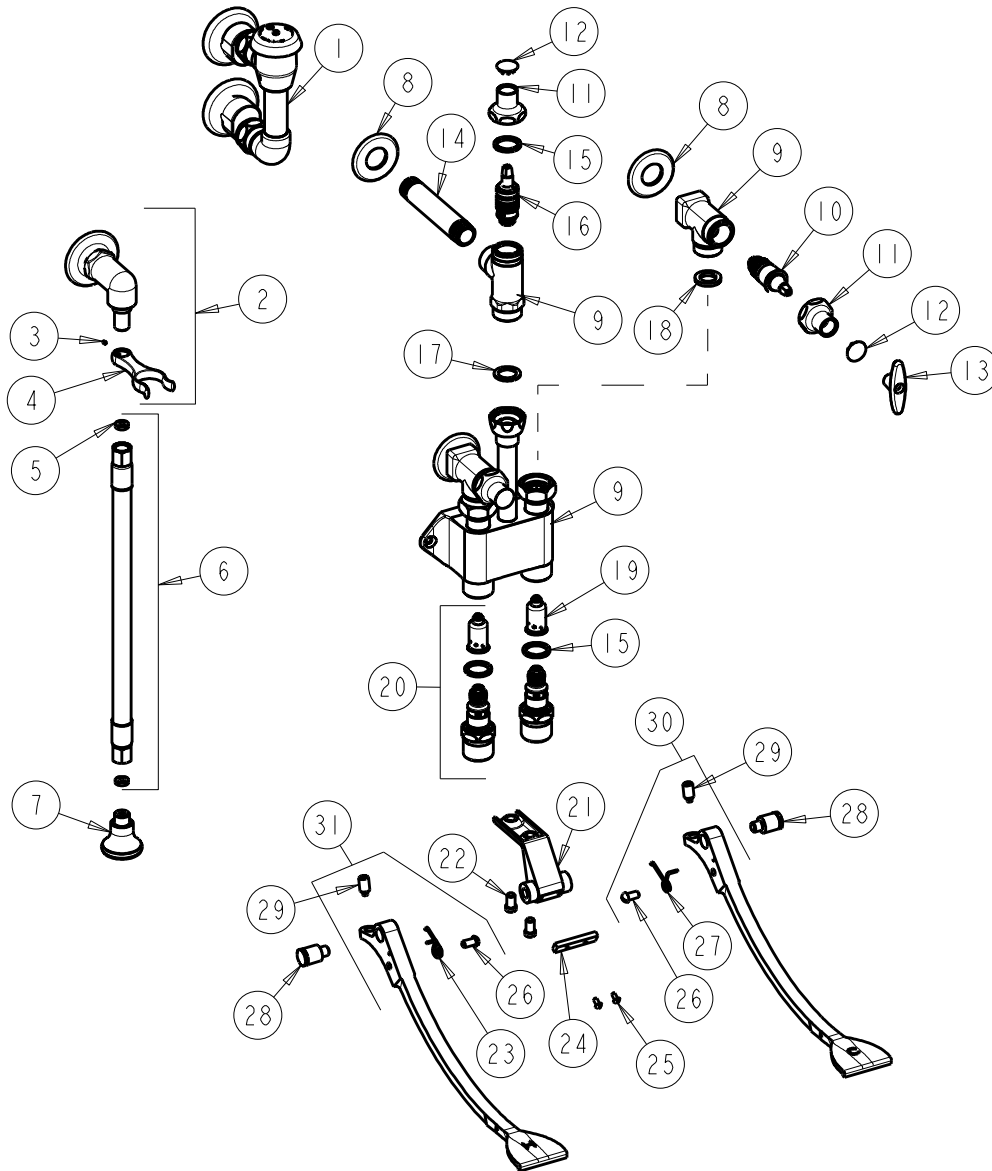
FITTING NO.

910-GSLOC

SUBMITTED MODEL NO.

ITEM NO.

FOR TECHNICAL ASSISTANCE
1-800-TEC-TRUE (1-800-832-8783)



ITEM	PART NO.	DESCRIPTION	ITEM	PART NO.	DESCRIPTION
1	892-GCP	ELEVATED VACUUM BREAKER ASSY.	17	698-002JKNF	GASKET, .98 X .69 X .06
2	777-033JKCP	ANGLE SHANK ASSEMBLY	18	1-011JKNF	WASHER, .97 X .62 X .12
3	777-013JKNF	SCREW, SET 6-32 X 1/8	19	333-073KJKNF	DASHPOT, SLOW
4	---	FORK (NOT SOLD SEPARATELY)	20	625-XSLOJKNF	FOR PARTS SEE 625-XSLOJKNF
5	739-051JKNF	GASKET, 1/2 X 1/4 X 1/8	21	834-013JKCP	PEDAL BRACKET
6	739-048KJKNF	4' WHITE VINYL HOSE ASSEMBLY	22	625-006JKNF	SCREW, PAN HEAD 5/16-18 UNC
7	E21JKCP	ROSE SPRAY ASSEMBLY	23	834-010JKNF	SPRING, LH PEDAL
8	417-019JKCP	FLANGE, 1.94 X .88 X .11	24	834-012JKNF	PEDAL STOP
9	---	VALVE BODY (NOT SOLD SEPARATELY)	25	76-008JKNF	SCREW, ROUND HEAD 6-32
10	217-XTLHJKNF	CARTRIDGE, SLO-COMPRESSION (LH)	26	173-032JKNF	SCREW, ROUND HEAD 1/4-20 X 1/2
11	1-246JKCP	NUT, CAP LOOSE KEY 1-1/8-18 UNEF	27	834-011JKNF	SPRING, RH PEDAL
12	1-144JKCP	BUTTON	28	625-061JKRCF	BOLT, SHOULDER 3/8-24 UNF X 5/8 HEX
13	293-006JKRCF	TEE HANDLE (INCLUDES SCREW)	29	745-025JKNF	SCREW, PEDAL 3/8-24 UNF
14	528-020JKCP	NIPPLE, 1/2 NPT X 4-1/4	30	834-107KJKNF	PEDAL ASSEMBLY (COLD)
15	1-043JKNF	GASKET, CAP 1 X .80 X .09	31	834-007KJKNF	PEDAL ASSEMBLY (HOT)
16	217-XMVCLHJKNF	LH SLO-COMP. METAL VOL. CONTROL			