



a Geberit company

2100 South Clearwater Drive
Des Plaines, IL 60018
Phone: 847-803-5000
Fax: 847-803-5454
www.chicagofaucets.com

REPAIR PARTS

BY: SID DATE: 10-24-11

CHK: *[Signature]* REV:

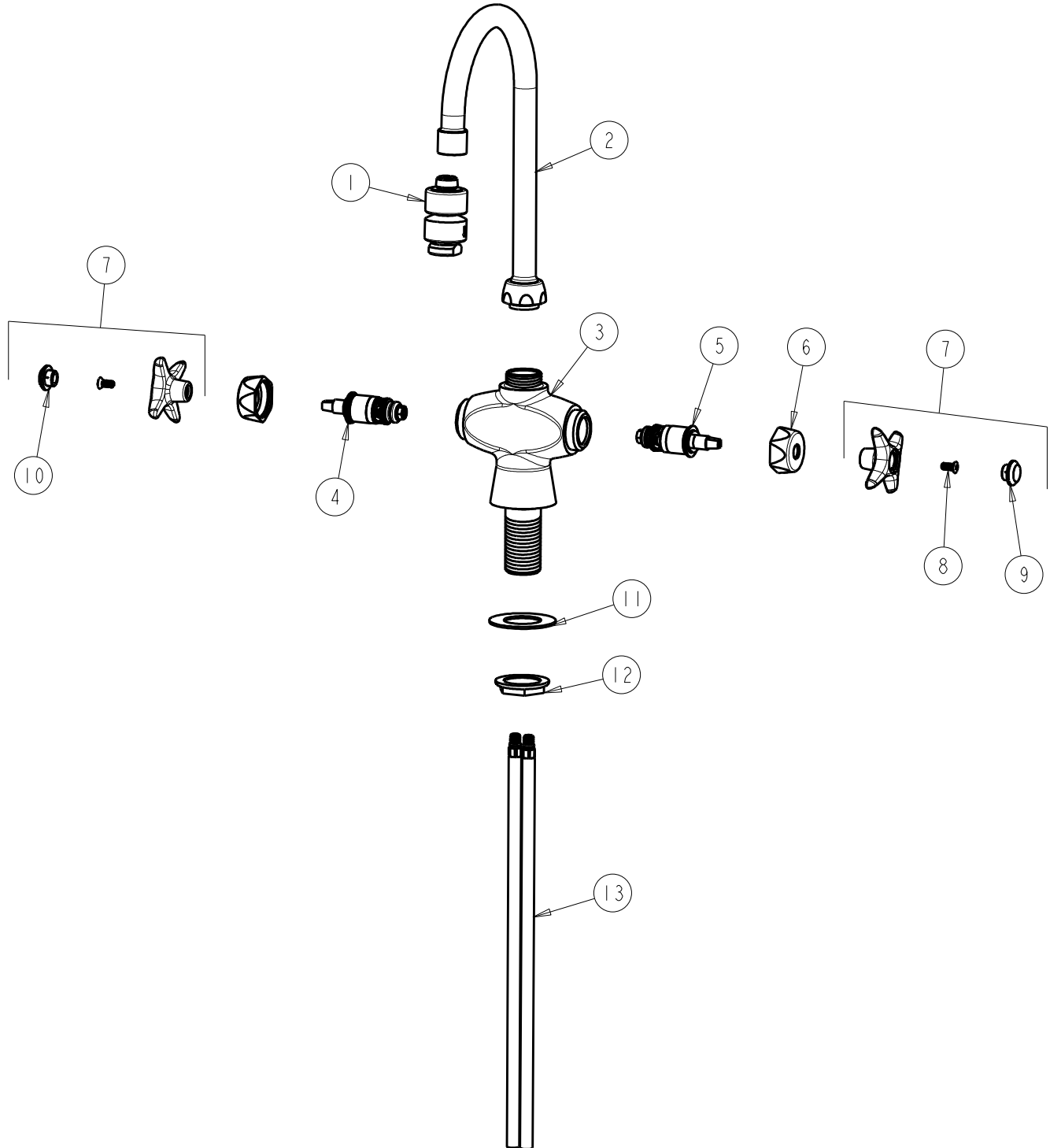
FITTING NO.

929-E22CP

SUBMITTED MODEL NO.

ITEM NO.

FOR TECHNICAL ASSISTANCE
1-800-TEC-TRUE (1-800-832-8783)



ITEM	PART NO.	DESCRIPTION	ITEM	PART NO.	DESCRIPTION
1	E22JKCP	VACUUM BREAKER	8	420-010JKRCF	SCREW, 10-32 UNC PH 1/2
2	GN2BJKCP	SPOUT	9	216-178JKNF	BUTTON 'CW'
3	-----	VALVE BODY (NOT SOLD SEPARATELY)	10	216-128JKNF	BUTTON 'HW'
4	217-XTLHJKNF	CARTRIDGE, SLO-COMPRESSION (LH)	11	50-014JKNF	STEEL WASHER
5	217-XTRHJKNF	CARTRIDGE, SLO-COMPRESSION (RH)	12	50-003JKRBF	LOCKNUT
6	444-005JKCP	CAP	13	50-101KJKNF	SUPPLY TUBE ASSEMBLY
7	204-PRJKCP	HANDLE ASSEMBLY (PAIR)			