

**CHICAGO FAUCETS**  
a Geberit company

2100 South Clearwater Drive  
Des Plaines, IL 60018  
Phone: 847-803-5000  
Fax: 847-803-5454  
www.chicagofaucets.com

# REPAIR PARTS

FITTING NO.

**956-RXKCP**

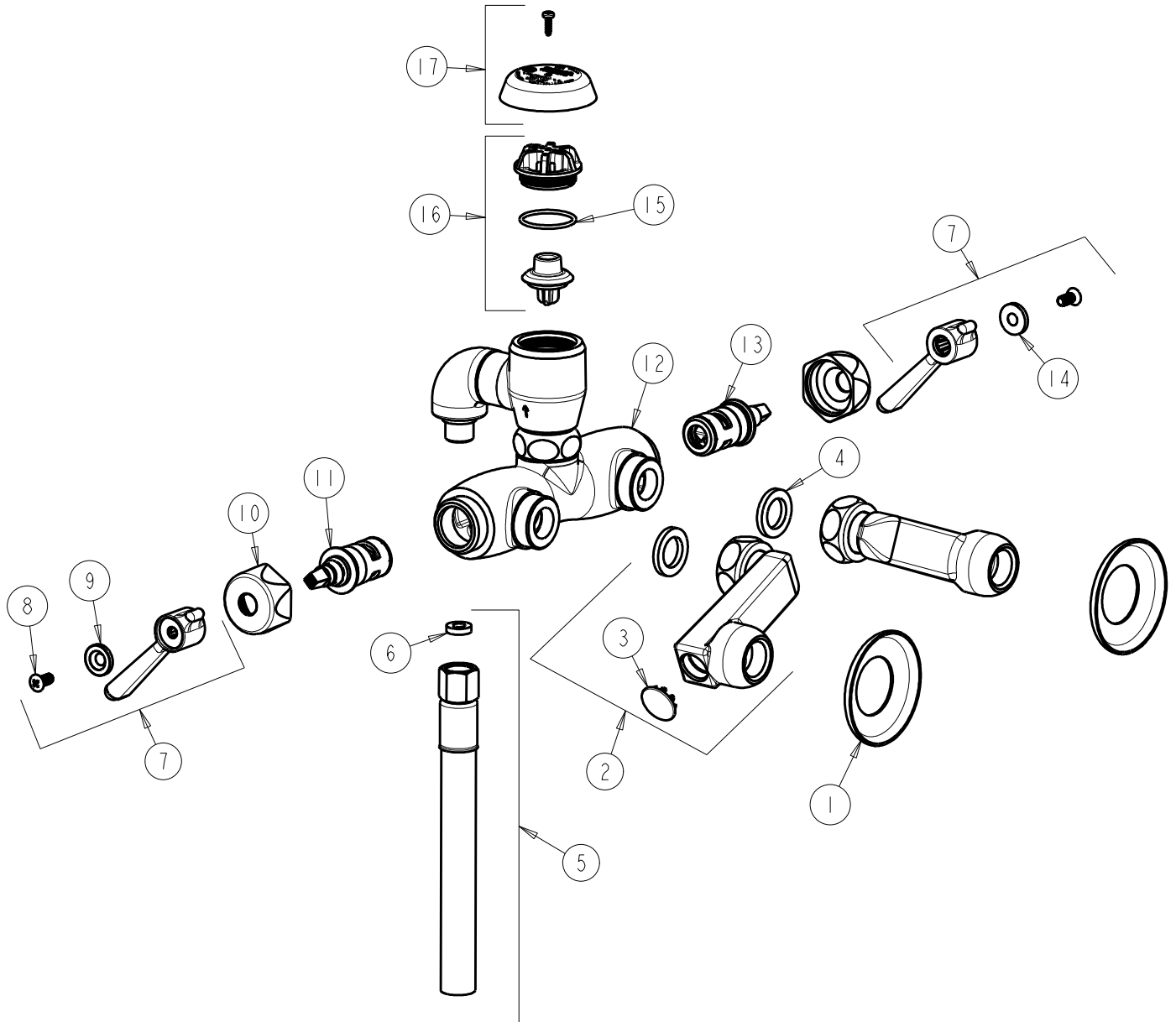
SUBMITTED MODEL NO.

ITEM NO.

BY: JAR DATE: 03-29-11

CHK: *[Signature]* REV:

**FOR TECHNICAL ASSISTANCE**  
1-800-TEC-TRUE (1-800-832-8783)



ITEM	PART NO.	DESCRIPTION	ITEM	PART NO.	DESCRIPTION
1	1-055JKCP	FLANGE	10	444-005JKCP	CAP
2	RJKCP	SUPPLY ARM WITH BUILT-IN SHUT-OFF	11	1-099XKJKNF	RH CERAMIC QUATURN UNIT
3	1-144JKCP	BUTTON	12	---	VALVE BODY (NOT SOLD SEPARATELY)
4	1-011JKNF	WASHER, .97 X .62 X .12	13	1-100XKJKNF	LH CERAMIC QUATURN UNIT
5	252-011KJKNF	HOSE ASSEMBLY 5'	14	633-023JKNF	INDEX BUTTON (RED)
6	739-051JKNF	GASKET, 1/2 X 1/4 X 1/8	15	80-007JKNF	O RING 0.989 X .070
7	369-PRJKCP	LEVER HANDLE ASSEMBLY (PAIR)	16	892-302KJKNF	VACUUM BREAKER REPAIR KIT
8	420-010JKRCF	SCREW, 10-32 UNC PH 1/2	17	892-254KJKCP	VACUUM BREAKER COVER w/SCREW
9	633-123JKNF	INDEX BUTTON (BLUE)			