

FAUCET INSTALLATION

This faucet comes with all the components needed for installation, however, some tools and supplies are not included.

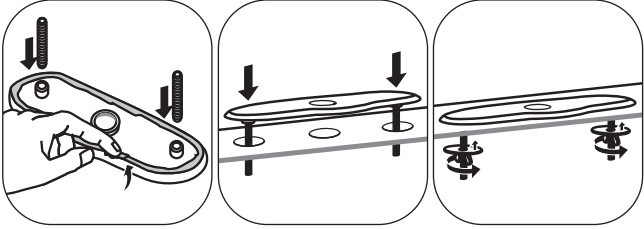
- Basin Wrench
- Adjustable Wrench
- Adjustable Locking Pliers
- Plumbers Putty
- Hex Key (supplied)
- Aerator Key (supplied)

i Do not use pipe dope on faucet or supply connections. Possible solenoid contamination could occur, voiding any warranty.

Step 1.

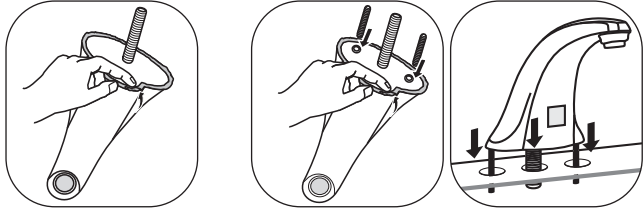
If you are using an 8" cover plate, apply the plumbers putty to plate and mount it to the deck.

8" Centers with coverplate



Step 2.

Place plumbers putty on the product and place on the deck. Single Hole 4" Centerset



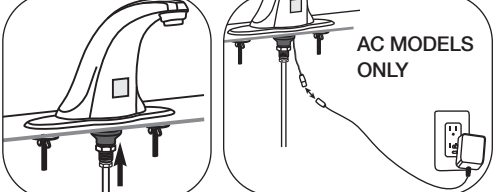
Step 3.

Secure faucet with mounting hardware. Flush line before connecting supply to fitting. NOTE: Supply hose not provided.



Step 4.

Connect supply hose to fitting. AC models only: plug in transformer.



NOTE:
For hardwire transformer, purchase accessory 242.340.00.1.

See next page for SSPS instructions.



a Geberit company

E-Tronic® 40 User Guide



a Geberit company

The Chicago Faucet Company
2100 South Clearwater Drive
Des Plaines, IL 60018
Phone: 847/803-5000
Fax: 847/803-5454
Technical: 800/832-8783
www.chicagofaucets.com

Thank you for purchasing the Chicago Faucets E-Tronic® 40. All Chicago Faucets products are carefully assembled and tested to insure the highest quality in the plumbing industry. We are proud to offer you a product that will provide years of dependable, reliable service.

Note: This user guide is a supplement to the faucet user guide. For instructions on how to install, service, and maintain the faucet, please refer to the faucet user guide.

Safety Information

Read this entire user guide to ensure proper installation. Compliance and conformity to local codes and ordinances is the responsibility of the installer. The following safety notes must always be complied with during handling of this product:

- Make sure there is enough space and lighting available during installation and service.
- Do not modify or convert this Chicago Faucets product yourself. All warranties will be voided.

IMPORTANT

- Installation may be performed at different times of construction by different individuals. For this reason, these instructions should be left on-site with the facility or maintenance manager.
- Pressurized plumbing fittings shall be installed in accordance with manufacturer's recommendations. The supply piping to these devices shall be securely anchored to the building structure to prevent installed device from unnecessary movement when operated by the user. Care shall be exercised when installing the device to prevent marring the exposed significant surface.
- Do not use pipe dope.
- Flush all the water supply lines before making connections.

SSPS INSTALLATION

The SSPS Generator comes with all the components needed for installation, however, some tools and supplies are not included.

- Basin Wrench
- Hand Drill
- Adjustable Wrench
- Adjustable Locking Pliers

i Do not use pipe dope on faucet and supply connections. Possible solenoid contamination could occur and will void any warranty.

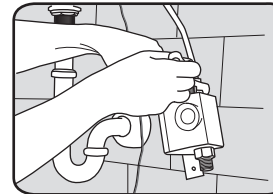
Mounting of SSPS Generator

Includes

- SSPS Generator Unit
- Electronics Module and Holder
- Green Power Adapter
- Hose

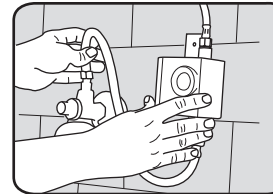
1 Connect faucet to SSPS unit.

Attached to faucet and install water supply line. Install filter at this point.



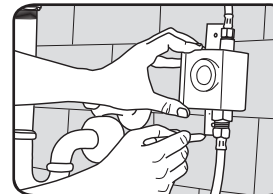
2 Position SSPS under sink.

Carefully position to allow connection of water lines and wiring.



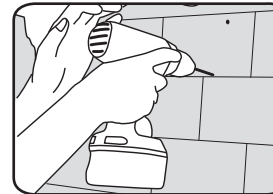
3 Mark holes.

Position mounting bracket and mark mounting holes.



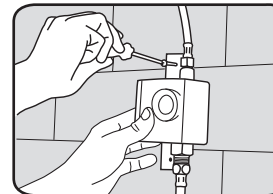
4 Drill holes.

Drill holes for screw anchors.



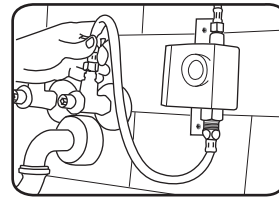
5 Secure SSPS to wall.

Insert anchors into holes and mount SSPS unit to wall with supplied screws.

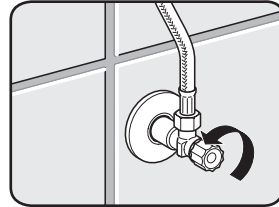


6 Attach to supply.

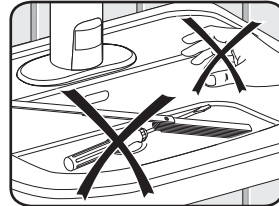
Attach inlet hose to supply and turn on water. With water on, check system for leaks.



7 Fully open supply valve.

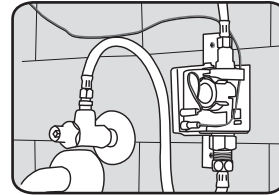


8 Remove all items from sink.



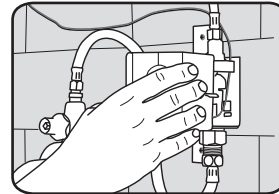
9 Connect wiring.

Remove cover and connect faucet wire to SSPS and secure into wire harness.

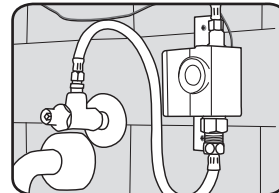


10 Attach cover.

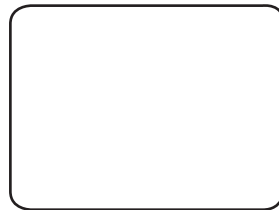
Faucet is ready to run through programming sequence.



11 Remove protective covering from sensor.



12 Wait for 15 seconds for faucet to calibrate to its environment.

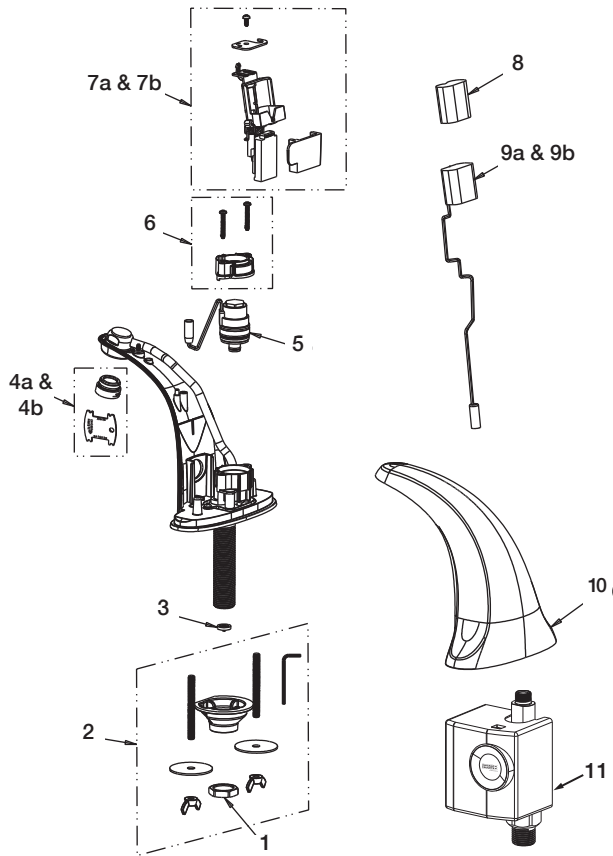


Result — The faucet is now activated.

15 sec.



Replacement Parts



Common Replacement Parts

- 1- Locknut
- 2- Kit, Deck Mounting Hardware
- 3- Filter/Screen
- 4a- VP Econoflo Outlet w/Key
- 4b- VP 1.0 GPM Laminar Outlet
- 5- Solenoid Valve
- 6- Kit, Bonnet Repair
- 7a- Kit, Module (Battery Not Included)
- 7b- Kit, SSPS Module E-Tronic 40
- 8- 6V Lithium Battery (Sold as a 6-Pack)
- 9a- AC Power Adapter
- 9b- Green Power Adapter (SSPS)
- 10- Spout Cover
- 11- SSPS Generator Complete

Part Number

- 49-004JKRBF
- 242.339.00.1
- 3300-005JKNF
- E2805JKCP
- 240.744.00.1
- 242.341.00.1
- 242.337.00.1
- 242.575.00.1
- 242.560.00.1
- 240.747.00.1
- 242.568.00.1
- 242.338.21.1
- 242.749.00.1

Accessories

- 8" Cover Plate
- Mechanical Mixer
- 1070 Thermostatic Mixer (4 Models)
- AC Adapter Wire
- Transformer – Plug-in – Single Use
- Transformer – Plug-in – Multi Use*
- Transformer – Hardwire – Multi Use*
- Transformer – Hardwire – Multi Use*

Part Number

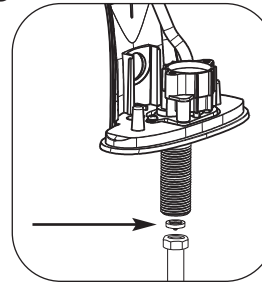
- 242.164.21.1
- 242.165.00.1
- 131 Series
- 242.340.00.1
- 240.630.00.1
- 242.559.00.1
- 240.631.00.1
- 242.659.00.1

*Maximum 8 Faucet Installation

Servicing Procedures

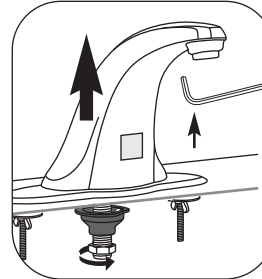
Replacing Filter

Close the stop valves and disconnect the 1/2" NPSM connection to the faucet shank. The screen filter is located in the shank of the faucet. Remove filter with a pick or pliers and place the new one in.



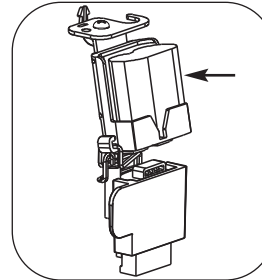
Servicing Internal Components

1 Remove screw with T15-wrench provided (Torque screw specify) and lift spout cover.



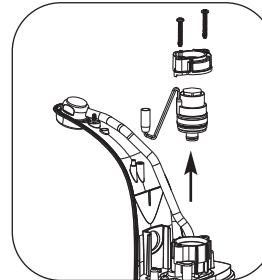
2 Battery Servicing

Simply press down and slide out the top to remove the old battery. Place the new battery by making contact connection on the bottom and sliding the top of the battery inside the battery holder.



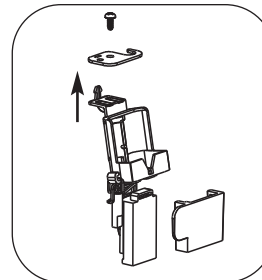
2a Solenoid Servicing

Remove two bonnet screws & take out bonnet. Remove solenoid by pulling upward. Note: Solenoid is not threaded into valve body.



2b Module Servicing

Remove the screw and replace existing module with new one. Replace the screw.



Troubleshooting

Problem - No Water Flow

Possible Cause	Solution
Supply valves are closed	Open supply valves
Aerator is blocked or dirty	Clean or replace aerator <i>See Servicing Procedures Section</i>
Inlet water line filter is dirty or blocked	Clean or replace filter <i>See Servicing Procedures Section</i>
Braided hose is kinked	Eliminate braided hose kink
No external water pressure	Check water pressure. Provide water pressure.
Battery is drained (DC faucets only)	Replace battery <i>See Servicing Procedures Section</i>
Battery contacts are corroded (DC faucets only)	Clean contacts or replace battery <i>See Servicing Procedures Section</i>
Reverse battery insertion (DC faucets only)	Insert battery correctly
Connector between transformer or SSPS unit and power adapter unplugged (AC or SSPS faucets only)	Plug connector
Power adapter contacts are corroded (AC or SSPS faucets only)	Clean contacts
Connecting cable is kinked or broken (AC or SSPS faucets only)	Replace defective parts <i>See Servicing Procedures Section</i>
No external power supply (AC or SSPS faucets only)	Check external power supply Provide power supply
Solenoid valve inoperable	Replace solenoid valve <i>See Servicing Procedures Section</i>
Electronics module inoperable	Contact Chicago Faucets technical service or replace electronics module <i>See Servicing Procedures Section</i>
Power adapter defective (AC or SSPS faucets only)	Contact Chicago Faucets technical service or replace power adapter <i>See Servicing Procedures Section</i>
Infrared window scratched or dirty	Clean window with smooth cloth

Problem - Water runs continuously and stops when object is present

Possible Cause	Solution
Connector between electronics module and solenoid valve plug is reversed	Plug connector properly

Problem - Water runs continuously

Possible Cause	Solution
Interfering object is in monitoring range	Remove object from monitoring area. Remove & re-install shut-off screw. Do not disturb sensor scanning procedure (wait until water flow stops and LED switches off)
Defective electronics module	Replace electronics module <i>See Servicing Procedures Section</i>
Improper sensor mode	Change mode or reset sensor <i>See Servicing Procedures Section</i>
External water pressure too high	Check external water pressure. Provide pressure between 20-125 psi
Solenoid valve inoperable	Replace solenoid valve <i>See Servicing Procedures Section</i>

Troubleshooting *Continued*

Problem - Water flows although shut-off screw is removed

Possible Cause	Solution
Electronics module is inoperable	Replace electronics module <i>See Servicing Procedures Section</i>
Water drops on infrared window	Clean window with smooth cloth

Problem - Faucet turns on by itself

Possible Cause	Solution
Infrared window is dirty or scratched	Clean window with smooth cloth
Input line pressure fluctuates	Install appropriate line pressure regulators

Problem - Faucet is leaking water

Possible Cause	Solution
Connection between valve body and solenoid valve is loose	Check O-rings. Replace O-rings when damaged. Carefully reinstall solenoid valve and do not overtighten.
Faucet drips, solenoid valve does not close properly	Clean or replace solenoid valve <i>See Servicing Procedures Section</i>

Problem - Temperature can not be adjusted properly

Possible Cause	Solution
No, or too little hot or cold water. Supply valves are not fully opened	Fully open supply valves
Inlet water line filter is dirty or blocked	Clean or replace filter <i>See Servicing Procedures Section</i>
Braided hose is kinked	Eliminate braided hose kink
Temperature of hot or cold water supply is too low	Check inlet water temperature or inspect boiler
Shut off screw is missing or defective	Replace shut-off screw <i>See Replacement Parts</i>

Product Compliances:

- ASME A112.18.1
- CSA B125.1
- ADA ANSI/ICC A117.1
- California AB1953
- Vermont S.152
- Certified to NSF/ANSI 61, Section 9 by CSA



LLC ONLY

Drinking Water
NSF/ANSI 61



Commander™

The E-Tronic 40® product you have purchased is compatible with Commander™ software. The software is available free of charge on the Chicago Faucet web site.

Commander allows you to adjust your electronic faucet hands-free. You can monitor the performance of the product, as well as refer to the troubleshooting guide for troubleshooting any issues.

Adjustments

Normal Mode:

An object is in front of the sensor and the faucet dispenses water. Once the object is removed from the area the water stops flowing. The factory maximum run time is 40 seconds. The user has the flexibility to adjust this maximum run time from 30 – 180 seconds in 1 second increments.

Metering Mode:

Metering mode is equivalent to a mechanical metering product often used in plumbing installations, but with a greater precision. After the faucet is triggered by the user, it runs for an exact predetermined amount of time that is specified by the user. The factory setting, if the mode is activated, is 10 seconds. The user range is from 3 – 60 seconds in 1 second increments.

Smart Power Mode:

The feature is factory turned off. If you have an application with long periods of no activation, the battery life of the product can be prolonged with activation of this feature. The user can specify a time frame if the faucet is not used in, it will reduce the frequency of scans from 4 times per second to 1 time per second. The factory setting is 24 hours and the user range is 6 – 48 hours in 1 hour increments. After the faucet is activated, it returns to normal operation until the period of time that the faucet is not used is met again.

Monitoring

The Commander Software also allows for monitoring of the faucet performance. Here are some of the parameters that the user can monitor:

- Voltage Levels (Battery Status)
- Current Errors on the product
- Settings Overview
- Time in Use (days)
- Number of Uses
- Number of Uses per Day
- Location Assignment (must be entered by the user)

Troubleshooting

The Commander Software provides a quick flowchart of possible causes and solutions in case of any problems.

Limited Warranty

The CHICAGO FAUCET COMPANY (“Chicago Faucets”) extends to the original consumer the following warranties for Genuine Chicago Faucets manufactured products and components, or other components under the Chicago Faucets Warranties, (collectively, the “Products”).

Lifetime Faucet Warranty The “Faucet”, defined as any metal cast, forged, stamped or formed portion of the Product, not including electronic or moving parts or water restricting components, or other components covered under the Chicago Faucet warranties, is warranted against defects for the life of the product.

One Year Finish Warranty The finish of the Product is warranted against manufacturing defects for a period of one (1) year from the date of Product purchase.

Electronic Faucets Mechanicals Warranty Are warranted for five (5) years from the date of installation.

Electronic Faucets Finishes Warranty Are warranted for one-year from the date of installation.

Electronic Faucets Electronics and Solenoid Warranty Are warranted for three (3) years from the date of installation.