



“THREE-PHASE” (TRIPLE HEATING MODULES)

Made In USA

ELECTRIC TANKLESS WATER HEATERS

5/06

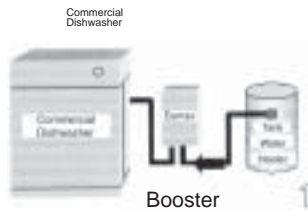
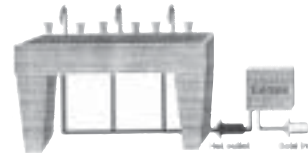
MODELS:

“THREE PHASE” Models

(Triple Module) Thermostatic, Parallel Turn-On

Same as above for cold or hot water feed, used for booster or where very accurate water temperature is required. (+/- 1.0°F). 1.8GPM turn on. Max Flow 5GPM

| | Volts | kW | Amps |
|---------|----------------------------------|-----------|-------------|
| EX180T3 | 208/120V (no neutral leg) | 18kW | 50A/phase |
| EX240T3 | 208/120V (no neutral leg) | 24kW | 67A/phase |
| EX180T3 | 480Y/277V (neutral leg required) | 18kW | 22A/phase |
| EX240T3 | 480Y/277V (neutral leg required) | 24kW | 29A/phase |
| EX320T3 | 480Y/277V (neutral leg required) | 32kW | 39A/phase |



SPECIFICATION OPTIONS (T3)

- EE = Tepid water 70° to 90° ANSI 2358.1
- S = Sanitation 180°
- FS = Factory set (ambient to 180°)

“THREE PHASE” Models

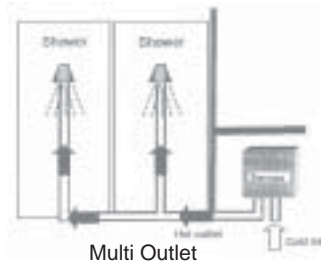
(Triple Module) Thermostatic, Staged Turn-On

Cold or hot water feed heater, designed to turn on in stages based on flow, will maintain precise outlet temperature (+/- 1.0°F).

Ideal for multi outlet applications: modular hand washing, multi-shower, restaurants, beauty salons.

Turn on .7GPM. Max Flow 4.0GPM.

| | Volts | kW | Amps |
|----------|----------------------------------|-----------|-------------|
| EX180T2T | 208/120V (no neutral leg) | 18kW | 50A/phase |
| EX240T2T | 208/120V (no neutral leg) | 24kW | 67A/phase |
| EX180T2T | 480Y/277V (neutral leg required) | 18kW | 22A/phase |
| EX240T2T | 480Y/277V (neutral leg required) | 24kW | 29A/phase |
| EX320T2T | 480Y/277V (neutral leg required) | 32kW | 39A/phase |



SPECIFICATION OPTIONS (T2T)

- S = Sanitation 180°
- ML = Multi Lav temp setting 105°-110° .5 turn on up to 8 lavs
- T2T = Hot or cold feed staged turn-on .7 turn on, max 4 GPM
- FS = Factory set (ambient to 180°)

QUALITY FEATURES

- **On Demand Hot Water** - no delay.
- **Continuous Hot Water** - no storage capacity to run out.
- **Thermostatic Feature available (“T3/T2T”)** - insures accurate outlet temperature. (+/- 1.0°F) Standard 100°F-140°F (range ambient to 180°F).
- **Factory set temperature available.**
- **Capacity to 5 GPM (P3, T3 only)**
- **Cut Energy Waste** - flow switch activates heater only on demand (no standby heat loss).
- **Compact Size** - dimensions; 15¼” x 12¼” x 4 ¼” weight 15 lbs
- **Designed for Durability, reduces calcification, sedimentation**
- **Space Saving Installation** - wall mounted
- **Field Serviceable Elements** - replaceable cartridge elements. (1 year warranty)
- **Warranty** - Full Factory Warranty - Heaters are guaranteed against failure due to leaks of “Heater Body/Element Assembly” for a period of FIVE YEARS.
- **Custom factory built heaters available to your specifications. Contact Eemax Engineering 800-543-6163**

SUGGESTED SPECIFICATION

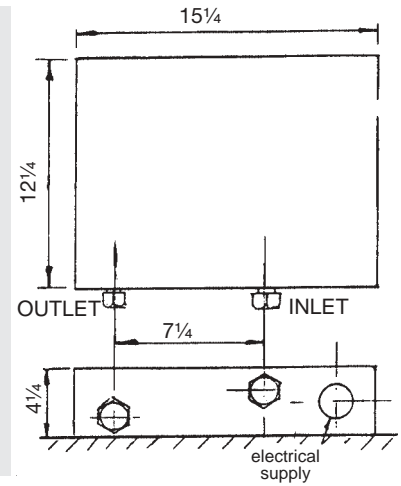
- Spec Option: EE = Tepid water to 70° - 90°
 ANSI Z358.1 compliant
- S = Sanitation 180°
- ML = Multi Lav temp setting 105° - 110°
 .5 GPM turn on up to 8 lavs
- FS = Factory set (ambient to 180°)

Heater shall have three heating modules. Elements shall be replaceable cartridge inserts. Unit shall have a replaceable filter in the inlet connector. Elements shall be iron free nickel-chrome wire. Heater shall be fitted with compression nuts and sleeves to eliminate need for soldering. Maximum operating pressure of 150 psi. Hot water storage tanks prohibited. Units shall be Eemax or approved equal.

NOTE: Refer to ratings chart for product information.

SPECIFICATIONS:

Dimensions: 15 1/4" x 12 1/4" x 4 1/4"
 Weight: 15 lbs.
 Cover: Enameled Steel.
 Glass Reinforced Heater Body
 Color: White
 Element: Triple replaceable Ni Chrome cartridge elements inserts
 Pipe-Fittings: 5/8" I.D. compression (1/2" copper pipe) at bottom of unit.
 Operation Pressure: Min 25PSI, Max 150
 U.S. Patent #: 4,960,976
 4,762,980



EEMAX SUBMITTAL

Engineer/Architect: _____
 Job Name/Customer: _____
 Location: _____
 Contractor: _____
 Representative: _____
 HEATER SPECIFICATIONS:

| Option | Quantity | kW | Voltage | AMPS | GPM |
|------------------------|----------|----|---------|------|-----|
| Three Phase # EX _____ | | | | | |

SPECIAL DESIGN SERVICE INQUIRIES FOR UNITS FOR UNIQUE APPLICATIONS ARE WELCOME. CALL OUR TECHNICAL SERVICE DEPT. 1-800-543-6163.



RATINGS OF "THREE PHASE" MODELS PARALLEL TURN ON

T3 = Thermostatic (Parallel) *Turns on 1.8GPM, 5GPM max

| MODEL | THERMOSTATIC PARALLEL | kW RATING | VOLTAGE | CURRENT PER PHASE | TEMPERATURE RISE °F | | | | | | | Recomm. WIRE SIZE |
|-------|-----------------------|-----------|-----------------------------------|-------------------|---------------------|--------|--------|--------|--------|--------|--------|-------------------|
| | | | | | 1.5GPM | 2.0GPM | 2.5GPM | 3.0GPM | 3.5GPM | 4.0GPM | 5.0GPM | |
| EX180 | T3 | 18kW | 208/120V Delta-no neutral leg | 50A/phase | 82° | 61° | 49° | 41° | 35° | 32° | 25° | 6AWG |
| EX240 | T3 | 24kW | 208/120V Delta-no neutral leg | 67A/phase | — | 82° | 65° | 54° | 47° | 41° | 34° | 6AWG |
| EX180 | T3 | 18kW | 480Y/277V neutral leg required | 22A/phase | 82° | 61° | 49° | 41° | 35° | 32° | 25° | 10AWG |
| EX240 | T3 | 24kW | 480Y/277V neutral leg required | 29A/phase | — | 82° | 65° | 54° | 47° | 41° | 34° | 10AWG |
| EX320 | T3 | 32kW | 480Y/277V neutral leg required | 39A/phase | — | — | 87° | 73° | 62° | 55° | 45° | 8AWG |

OPTIONS: T3 = hot or cold feed

RATINGS OF "THREE PHASE" MODELS STAGED TURN ON • Turns on in stages .7GPM, 4GPM max

| MODEL | THERMOSTATIC STAGED | kW RATING | VOLTAGE | CURRENT PER PHASE | TEMPERATURE RISE °F | | | | | | Recomm. WIRE SIZE |
|-------|---------------------|-----------|-----------------------------------|-------------------|---------------------|--------|--------|--------|--------|--------|-------------------|
| | | | | | 1.5GPM | 2.0GPM | 2.5GPM | 3.0GPM | 3.5GPM | 4.0GPM | |
| EX180 | T2T | 18kW | 208/120V Delta-no neutral leg | 50A/phase | 82° | 61° | 49° | 41° | 35° | 32° | 6AWG |
| EX240 | T2T | 24kW | 208/120V Delta-no neutral leg | 67A/phase | — | 82° | 65° | 54° | 47° | 41° | 6AWG |
| EX180 | T2T | 18kW | 480Y/277V neutral leg required | 22A/phase* | 82° | 61° | 49° | 41° | 35° | 32° | 10AWG |
| EX240 | T2T | 24kW | 480Y/277V neutral leg required | 29A/phase* | — | 82° | 65° | 54° | 47° | 41° | 10AWG |
| EX320 | T2T | 32kW | 480Y/277V neutral leg required | 39A/phase* | — | — | 87° | 73° | 62° | 55° | 8AWG |

* If the unit is connected to a 460/265 three phase system, the above outputs will be reduced by 8.5%.

T2T = hot or cold feed staged turn on

Electrical Configurations and Requirements for Eemax Three Phase Tankless Water Heaters.

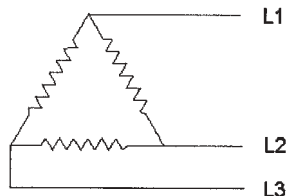
All Eemax three-phase units are custom made to order and as such are, non-returnable and non-refundable. We urge you therefore to check your electrical supply, making sure all criteria for operating your Eemax water heater are met, especially that a neutral line is available for all 480/277 volt units.

Eemax 208/120 Three Phase Units

Delta Configuration

Requires: 3 Lives, 1 Ground (earth)

Three-Phase delta; Three-wire

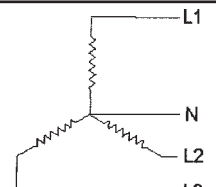


Eemax 480/277 Three Phase Units

Star Configuration

Requires: 3 Lives, 1 Neutral and 1 Ground

Three-Phase star; four-wire; non-earthed neutral



Eemax® Inc.

353 Christian Street, Oxford, CT 06478

www.eemax.com

Telephone: (203) 267-7890

TOLL FREE: 1-800-543-6163

FAX: (203) 267-7975