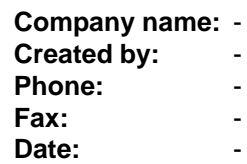


Position	Count	Description	Unit price
	1	<p><b>Unilift KP 150</b>  Product No.: 011DC201  Submersible drainage pump</p> <p>Vertical single-stage stainless steel submersible pump with vertical discharge port and integrated submersible 1-phase canned motor in insulation class F with thermal overload protection.</p> <p>The pump is fitted with a suction strainer, a carrying handle and is supplied with a 33 ft mains cable.</p> <p>The impeller is a semi-open impeller for 33 ft. free passage suitable for pumping groundwater, surface water, rain water and similar liquids.</p> <p>The pump has a double shaft seal consisting of two lip seals with grease in-between.</p> <p>The pump has an outer casing ensuring continuous cooling of the motor by the pumped liquid. The rotor shaft operates in two maintenance-free carbon bearings cooled by the pumped liquid.</p> <p>The motor is filled with a non-toxic motor liquid.</p> <p>Liquid:  Liquid temperature range: 32 .. 122 °F</p> <p><b>Technical:</b>  Type of impeller: Semi-open  Approvals on nameplate: UL Listed, CSA</p> <p><b>Materials:</b>  Pump housing: Stainless steel  DIN W.-Nr. 1.4301  AISI 304  Impeller: Stainless steel  DIN W.-Nr. 1.4301  AISI 304</p> <p><b>Installation:</b>  Pump outlet: 1 1/4" NPT  Maximum installation depth: 32.8 ft</p> <p><b>Electrical data:</b>  Power input - P1: 300 W  Main frequency: 60 Hz  Rated voltage: 1 x 115 V  Rated current: 2.9 A  Starting current: 8.7 A  Capacitor size - run: 20 µF/250 V  Enclosure class (IEC 34-5): 68  Insulation class (IEC 85): F  Length of cable: 33 ft  Type of cable plug: US</p> <p>Others:</p>	On request



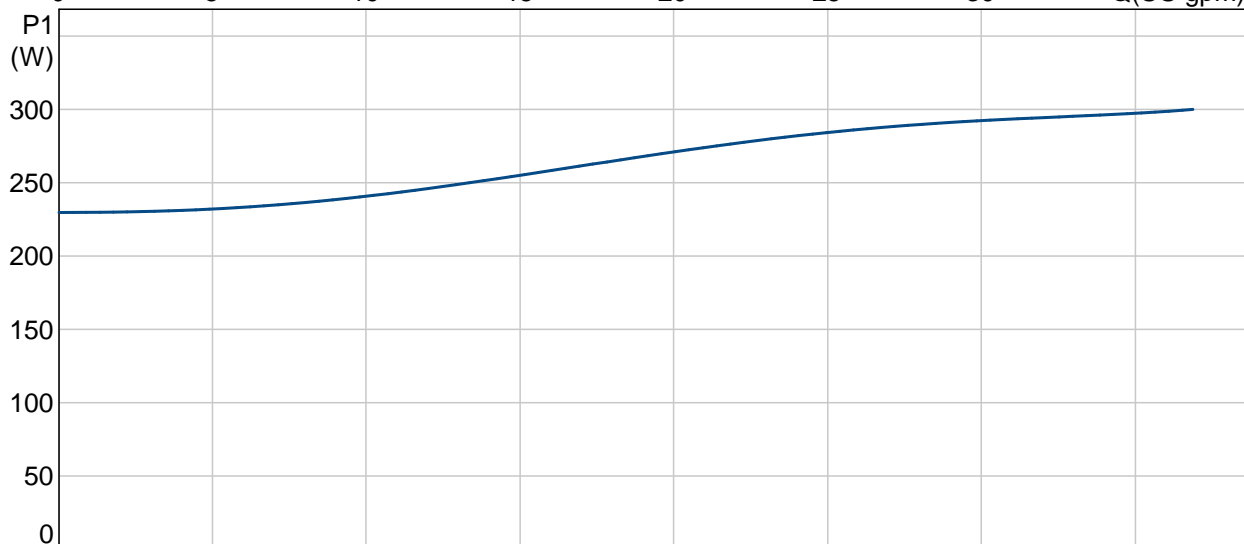
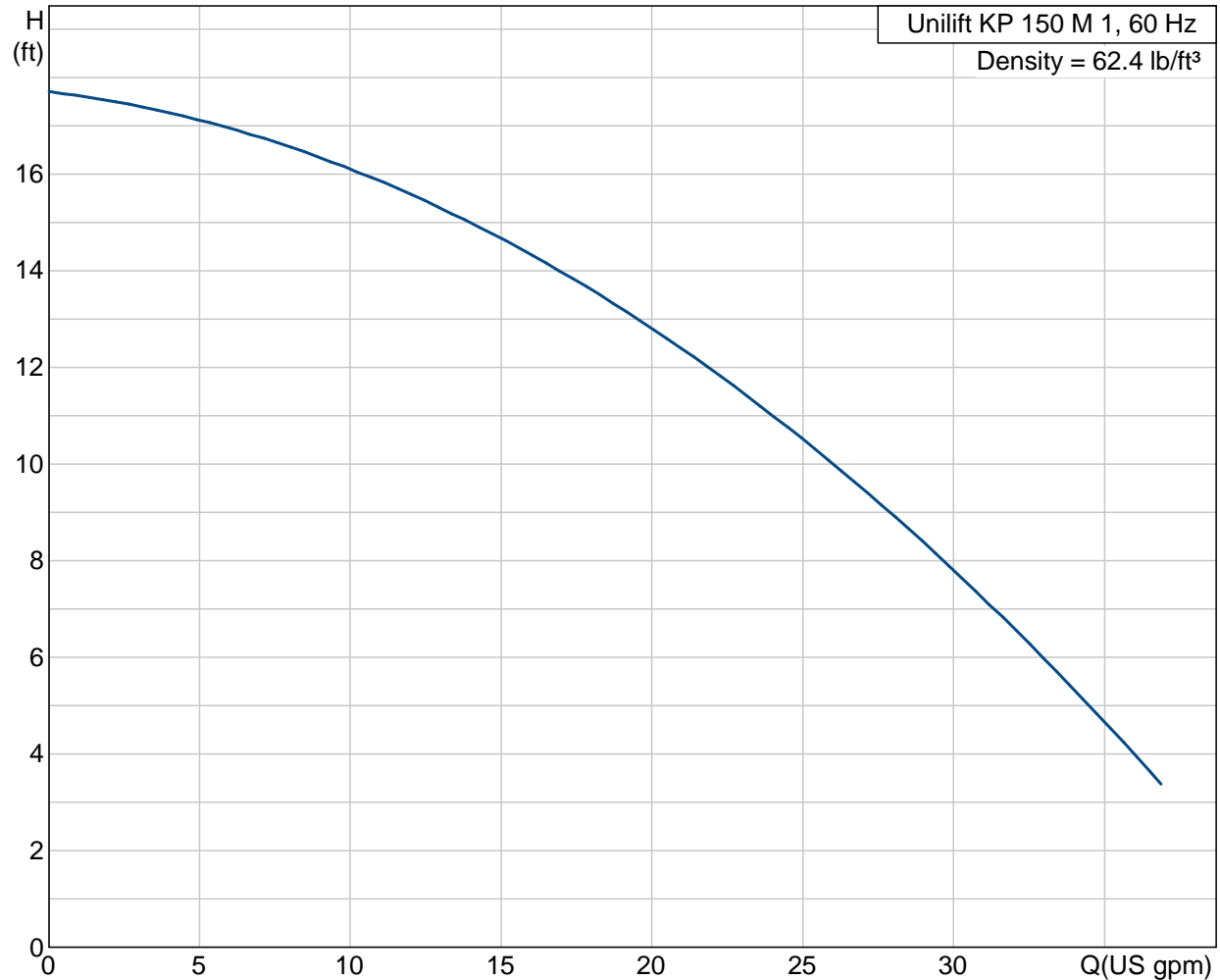
Printed from Grundfos CAPS



Position	Count	Description	Unit price
	1	<p><b>Unilift KP 150</b></p>  <p>Product photo could vary from the actual product</p> <p>Product No.: 011DC201 Submersible drainage pump</p> <p>Vertical single-stage stainless steel submersible pump with vertical discharge port and integrated submersible 1-phase canned motor in insulation class F with thermal overload protection.</p> <p>The pump is fitted with a suction strainer, a carrying handle and is supplied with a 33 ft mains cable.</p> <p>The impeller is a semi-open impeller for 33 ft. free passage suitable for pumping groundwater, surface water, rain water and similar liquids.</p> <p>The pump has a double shaft seal consisting of two lip seals with grease in-between.</p> <p>The pump has an outer casing ensuring continuous cooling of the motor by the pumped liquid. The rotor shaft operates in two maintenance-free carbon bearings cooled by the pumped liquid.</p> <p>The motor is filled with a non-toxic motor liquid.</p> <p><b>Liquid:</b> Liquid temperature range: 32 .. 122 °F</p> <p><b>Technical:</b> Type of impeller: Semi-open Approvals on nameplate: UL Listed, CSA</p> <p><b>Materials:</b> Pump housing: Stainless steel DIN W.-Nr. 1.4301 AISI 304 Impeller: Stainless steel DIN W.-Nr. 1.4301 AISI 304</p>	On request

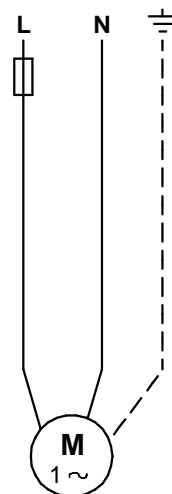
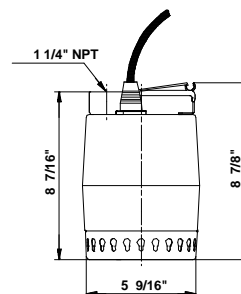
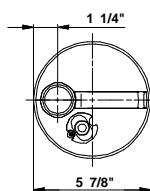
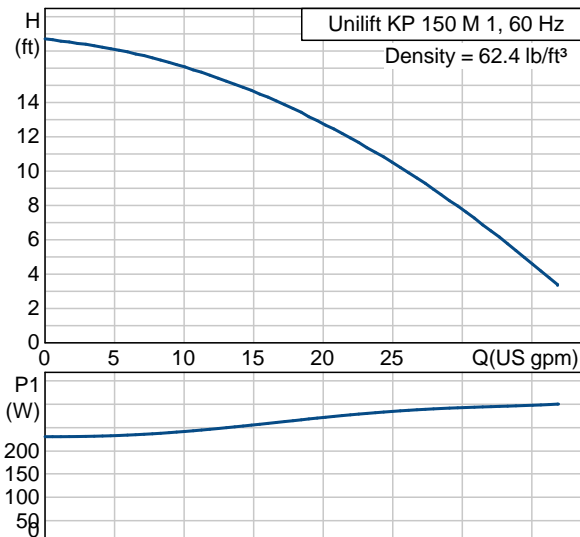
Position	Count	Description	Unit price
		<b>Installation:</b> Pump outlet: 1 1/4" NPT Maximum installation depth: 32.8 ft  <b>Electrical data:</b> Power input - P1: 300 W Main frequency: 60 Hz Rated voltage: 1 x 115 V Rated current: 2.9 A Starting current: 8.7 A Capacitor size - run: 20 µF/250 V Enclosure class (IEC 34-5): 68 Insulation class (IEC 85): F Length of cable: 33 ft Type of cable plug: US  <b>Others:</b> Shipping volume: 0.44 ft <sup>3</sup>	

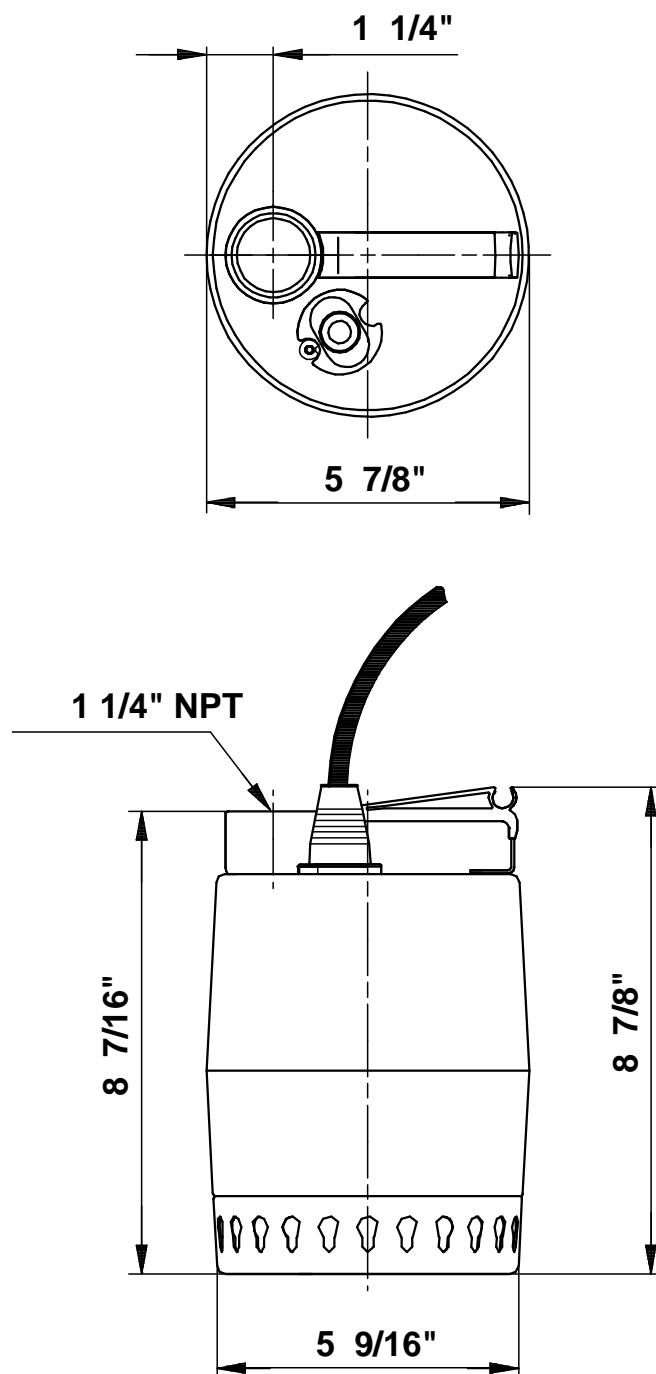
**011DC201 Unilift KP 150 M 1 60 Hz**



Company name: -  
 Created by: -  
 Phone: -  
 Fax: -  
 Date: -

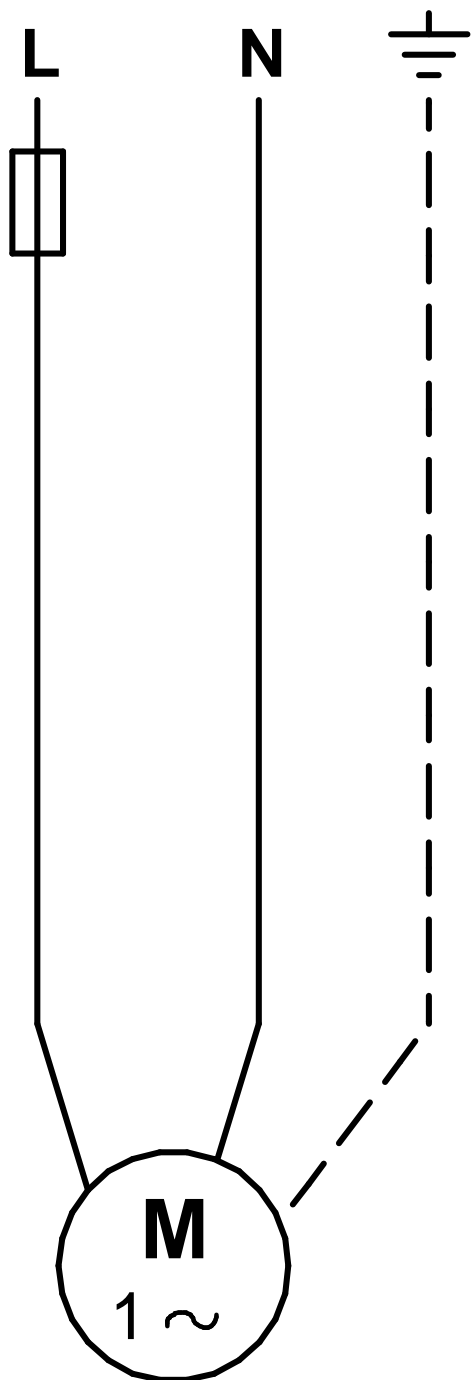
Description	Value
Product name:	Unilift KP 150 M 1
Product Number:	011DC201
EAN number:	5700391247385
Technical:	
Max flow:	37.4 US gpm
Head max:	17.7 ft
Type of impeller:	Semi-open
Approvals on nameplate:	UL Listed, CSA
Materials:	
Pump housing:	Stainless steel
	DIN W.-Nr. 1.4301
	AISI 304
Impeller:	Stainless steel
	DIN W.-Nr. 1.4301
	AISI 304
Installation:	
Pump outlet:	1 1/4" NPT
Maximum installation depth:	32.8 ft
Inst dry/wet:	D/S
Installation	horizontal or vertical
Liquid:	
Liquid temperature range	32 .. 122 °F
Electrical data:	
Power input - P1:	300 W
Main frequency:	60 Hz
Rated voltage:	1 x 115 V
Rated current:	2.9 A
Starting current	8.7 A
Capacitor size - run	20 µF/250 V
Enclosure class (IEC 34-5):	68
Insulation class (IEC 85):	F
Motor protection:	CONTACT
Thermal protec:	internal
Length of cable:	33 ft
Type of cable plug:	US
Others:	
Shipping volume:	0.44 ft³
Sales region:	Namreg



**011DC201 Unilift KP 150 M 1 60 Hz**

Note! All units are in [mm] unless others are stated.  
Disclaimer: This simplified dimensional drawing does not show all details.

011DC201 Unilift KP 150 M 1 60 Hz



All units are [mm] unless otherwise presented.