


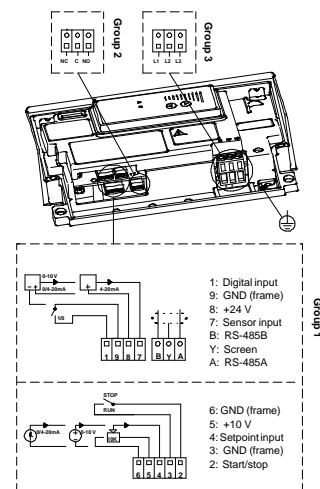
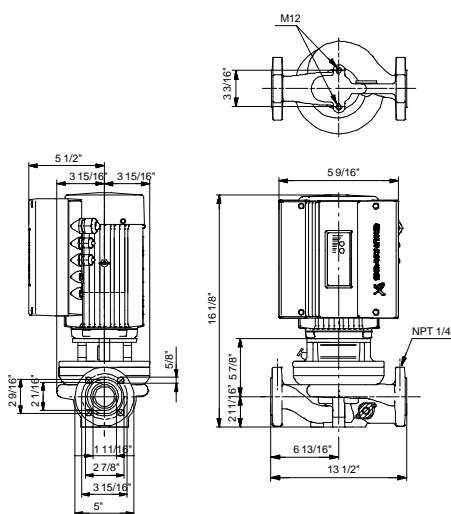
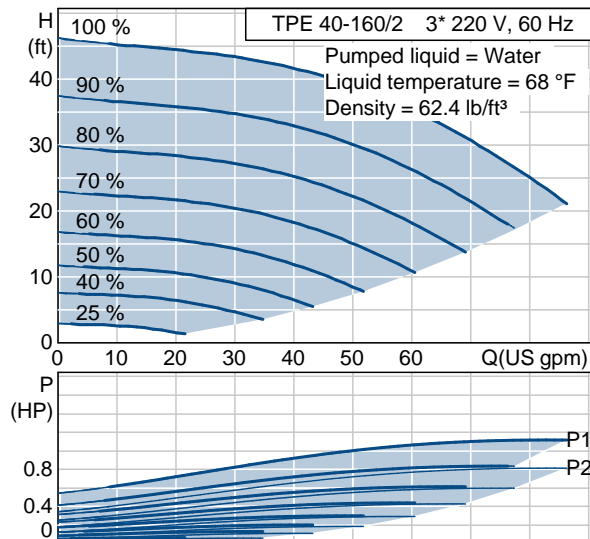


Position	Count	Description	Unit price
	-1	<p><b>TPE 40-160/2 U-G-A-BUBE</b></p>  <p>Product photo could vary from the actual product</p> <p>Product No.: 91136571 Single-stage, centrifugal, in-line, single-head pump.</p> <p>The in-line design with opposite suction and discharge ports enables mounting in pipework or on a concrete foundation.</p> <p>The shaft seal is a corrosion resistant maintenance-free mechanical seal.</p> <p>The pump is fitted with a three-phase MLE motor with frequency converter and PI-controller integrated in the motor terminal box. No additional motor protection is required as both motor and electronics are protected by integrated overload and temperature protection.</p> <p>External sensor can be connected if controlled pump operation based on for example flow, differential pressure or temperature is required.</p> <p>A control panel enables setting of required setpoint as well as setting of pump to MIN or MAX operation or to STOP. The control panel has indicator lights for "Operation" and "Fault".</p> <p>Communication with the pump is possible by means of Grundfos R100 Remote Control enabling further settings as well as reading out of a number of parameters such as "Actual value", "Speed", "Power input" and total "Power consumption".</p> <p>The terminal box holds terminals for the connection of:</p> <ul style="list-style-type: none"> <li>- Pump start/stop (potential-free contact),</li> <li>- external remote setpoint setting via analog signal, 0 - 5 V, 0 - 10 V, 0(4) - 20 mA,</li> <li>- 5 V voltage supply for setpoint potentiometer, I<sub>max</sub> = 5 mA,</li> </ul>	On request

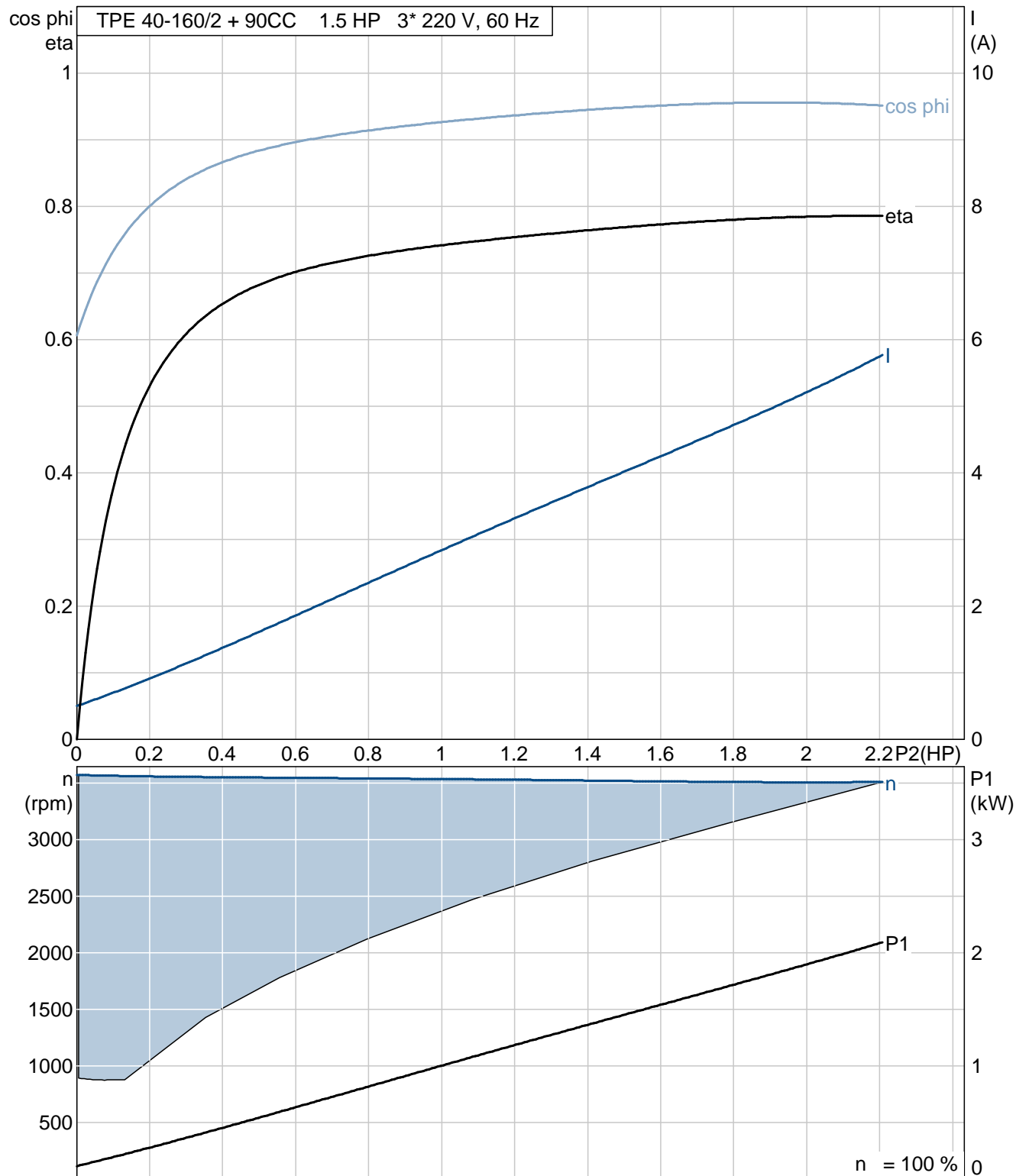
Position	Count	Description	Unit price
		<ul style="list-style-type: none"> <li>- sensor, 0 - 5 V, 0 - 10 V, 0(4) - 20 mA,</li> <li>- 24 V voltage supply for sensor, I<sub>max</sub> = 40 mA,</li> <li>- input for forced control to MIN or MAX (potential-free contact),</li> <li>- potential-free fault signal relay with changeover contact,</li> <li>- RS485 GENIbus.</li> </ul> <p>Liquid:</p> <p>Liquid temperature range: 5 .. 284 °F</p> <p>Liquid temp: 68 °F</p> <p><b>Technical:</b></p> <p>Speed for pump data: 3490 rpm</p> <p>Actual calculated flow: 56.4 US gpm</p> <p>Resulting head of the pump: 36.9 ft</p> <p>Shaft seal: BUBE</p> <p>Maximum operating pressure: 145 psi</p> <p><b>Materials:</b></p> <p>Pump housing: Cast iron EN-JL 1040 ASTM 25 B</p> <p>Impeller: Stainless steel DIN W.-Nr. 1.4301 AISI 304</p> <p><b>Installation:</b></p> <p>Maximum ambient temperature: 104 °F</p> <p>Maximum operating pressure: 145 psi</p> <p>Flange standard: US</p> <p>Pipe connection: 1 1/2"</p> <p>Pressure stage: 125 psi</p> <p>Flange size for motor: 56C</p> <p><b>Electrical data:</b></p> <p>Motor type: 90CC</p> <p>Number of poles: 2</p> <p>Rated power - P<sub>2</sub>: 1.5 HP</p> <p>Main frequency: 60 Hz</p> <p>Rated voltage: 3 x 208-230 V</p> <p>Rated current: 4.35 A</p> <p>Cos phi - power factor: 0.94</p> <p>Rated speed: 3480 rpm</p> <p>Enclosure class (IEC 34-5): 55</p> <p>Insulation class (IEC 85): F</p> <p>Others:</p> <p>Gross weight: 80 lb</p>	

Company name: -  
Created by: -  
Phone: -  
Fax: -  
Date: -

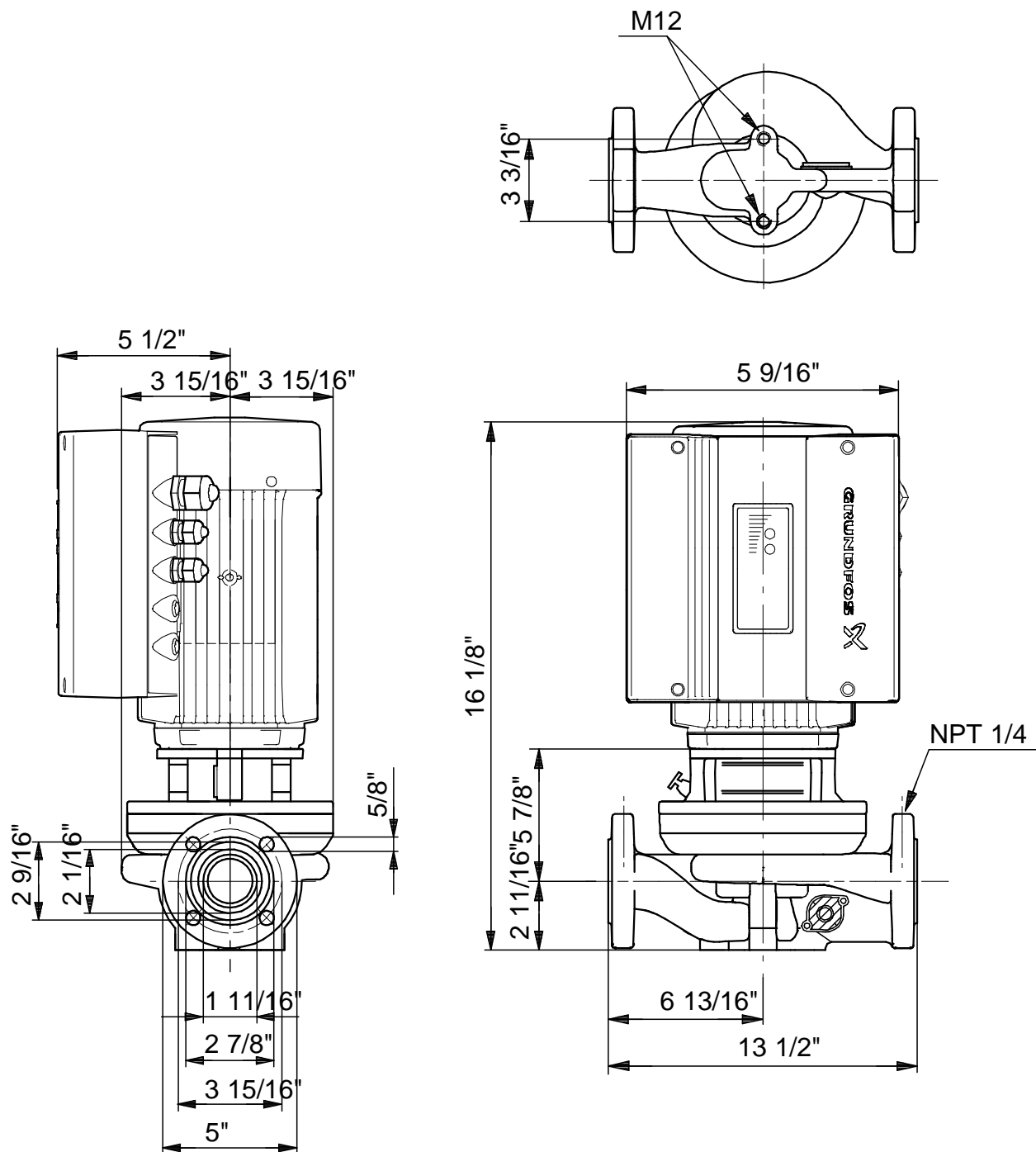
Description	Value
Product name:	TPE 40-160/2 U-G-A-BUBE
Product Number:	91136571
EAN number:	5700838068504
Technical:	
Speed for pump data	3490 rpm
Actual calculated flow:	56.4 US gpm
Resulting head of the pump:	36.9 ft
Head max:	78.7 ft
Shaft seal:	BUBE
Maximum operating pressure	145 psi
Pump Number:	96405259
Pump version:	U
Materials:	
Pump housing:	Cast iron
	EN-JL 1040
	ASTM 25 B
Impeller:	Stainless steel
	DIN W.-Nr. 1.4301
	AISI 304
Material code:	A
Installation:	
Maximum ambient temperature:	104 °F
Maximum operating pressure	145 psi
Flange standard:	US
Connect code:	G
Pipe connection:	1 1/2"
Pressure stage:	125 psi
Flange size for motor:	56C
Liquid:	
Liquid temperature range	5 .. 284 °F
Liquid temp:	68 °F
Electrical data:	
Motor type:	90CC
Number of poles:	2
Rated power - P2:	1.5 HP
Main frequency:	60 Hz
Rated voltage:	3 x 208-230 V
Rated current:	4.35 A
Cos phi - power factor:	0.94
Rated speed:	3480 rpm
Enclosure class (IEC 34-5):	55
Insulation class (IEC 85):	F
Motor protection:	NONE
Motor Number:	85900820
Others:	
Gross weight:	80 lb
Config. file no:	97845337



## 91136571 TPE 40-160/2 60 Hz

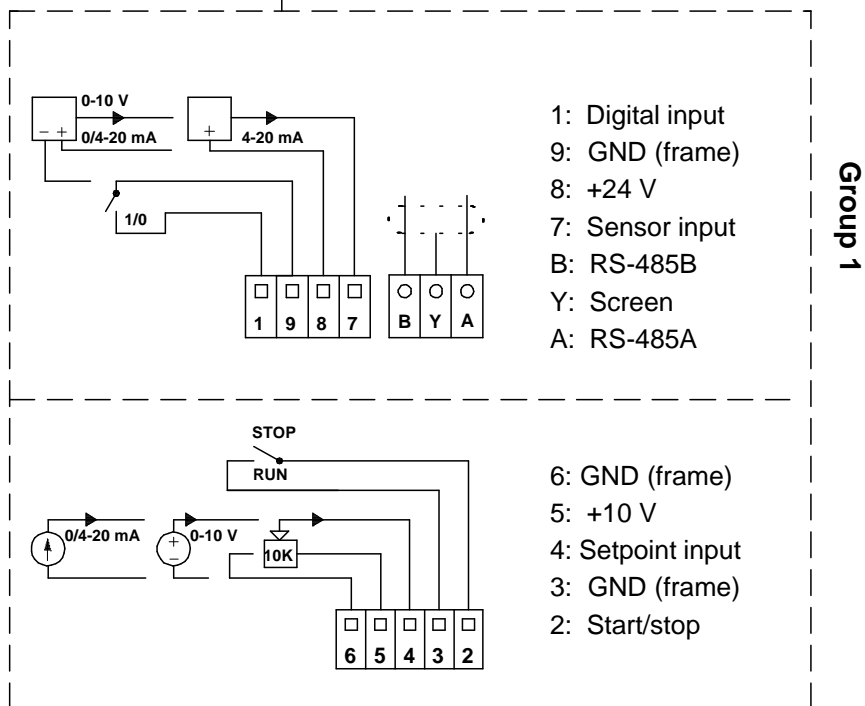
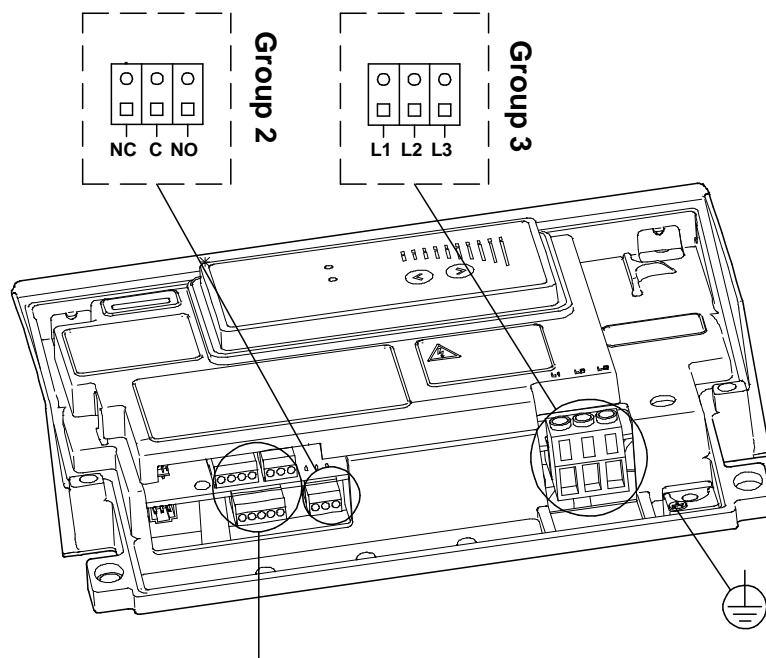


91136571 TPE 40-160/2 60 Hz



Note! All units are in [mm] unless others are stated.  
Disclaimer: This simplified dimensional drawing does not show all details.

91136571 TPE 40-160/2 60 Hz



All units are [mm] unless otherwise presented.