

# Rooftop Support Systems

MARS SERIES **939**

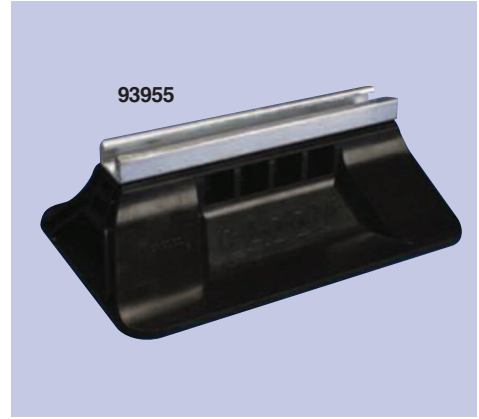


## Caddy® Pyramid ST Series Rooftop Support

Caddy® Pyramid ST Series Rooftop Support is roof-friendly, high-quality, versatile and durable for roofing applications.

**Features:**

- Thermoplastic base is UV stabilized and weatherproof for long lasting
- Fixed-height mounting platform 4" off the roof surface and 10" of usable strut length, provides excellent load distribution
- Structurally engineered to support up to 1,000 lbs
- Hot-dipped galvanized finish
- Superior corrosion protection
- Supports the green building requirements, bases are made from recycled material and can contribute toward earning LEED credit



93955

MARS NO.	Mfg No.	Height	Length (1)	Length (2)	Width	Surface Area	MAX. Rec. Load
93955	RPS360400	4"	10"	12.5"	8"	94.3"	1,000 lbs.

\* Max. recommended load at 10.6 psi roof loading. Contact project or roofing engineer for maximum allowable load on individual project roof system.

SERVICE & INSTALLATION

# Disconnects & Safety Switches

MARS SERIES **833 & 803**



## MARS Front Open Pullout Disconnect Boxes - NEMA 3R

MARS offers both fusible and non-fusible single phase air conditioner disconnects. These units provide a disconnecting means which should be located within sight from and readily accessible from the air conditioning or refrigerating equipment. UL listed. MARS #83315 is also CUL listed.

MARS NO.	DESCRIPTION	CASE QTY
83315	60 amp non-fused, single phase	6
83316	30 amp fused, single phase	6
83317	60 amp fused, single phase	6
83396	30 amp fused, single phase	6
83335	Generic brand disconnect box	6

## MARS Side Open Pullout Disconnect Boxes - NEMA 3R

The MARS Side Open Disconnect Boxes are contractor friendly and feature a unique side opening door, allowing easy access to the work area. The powder coated UV rated finish provides superior esthetics and greater longevity. The patented "finger safe" pullout section prevents accidental contact with electrodes. Easy to remove knockouts and a secure locking mechanism are also featured. This Pullout Disconnect Box is the ideal choice for the busy contractor.

**Specifications:**

- Single phase, 240V
- 10,000 amp rated
- NEMA 3R, rainproof
- UL & CUL rated

MARS NO.	DESCRIPTION	STD. PACK	CASE QTY
80315	60 amp non-fused	6	6
80316	30 amp fused	6	6
80317	60 amp fused	6	6



83316, 17

83335

83315

80315

Easy to remove concentric knockouts & secure locking mechanism

Unique side opening door permits greater visibility and access to work area

Patented "Finger Safe" Pullout section prevents accidental contact with electrodes