

Condenser Fan Motors – Single Phase – PSC

5½ inch dia. MARS SERIES 100



Outdoor Condenser Fan Motors

Ball Bearing

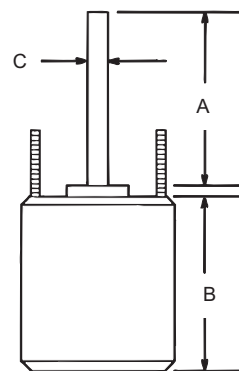
MARS up/down outdoor condenser fan motors are designed for either vertical shaft-up or shaft-down applications. Shell and end shields are enclosed for weather protection. A weep hole is provided in each end shield to allow condensate to drain. All of these motors are suitable for air conditioning or heat pump applications.

Features:

- All angle, ball bearing
- Rheem mounting holes w/screws installed
- Reversible rotation
- Water slinger on shaft
- Thru-bolt or band mounting
- Capacitor requirement noted on motor label
- Extra set of nuts & star washers on mounting studs
- Double full flatted shaft

Specifications:

- Class “B” insulation
- Single phase, 60 hertz
- Thermal overload protected
- Totally enclosed non-ventilated
- 36 inch leads



Cross Reference

MARS No.	GE/Genteq	Fasco	Marathon	Century/AO Smith	US Motors/ Emerson	Packard	York Source 1	RO TOM
10203	3203	D793	X465					
10204	3204		X450		1874	40825	S1-FHM3204	CF-814
10205	3205		X451		1875	30825	S1-FHM3205	CF-813
10732	3726		X427		2246			CF-3726
10733	3732	D7909	X428	F1026S, FE1026SF, FSE1026SV1	1876	51876		CF-3732
10734	3733	D7908	X413	F1036S, FE1036S	1877	51877		CF-3733
10735	3734		X414	F1056S, FE1056SF	1878	51878		CF-3734
10736	3735		X469	F1076SF, FS1076S	1879	51879		CF-3735
10747	3736		X452	F1058				

Reversible Rotation – Ball Bearing

MARS NO.	HP	VOLTS	AMPS	RPM	CAP REQ.	DIMENSIONS		
						A	B	C

1075 RPM

10732	1/6	208-230	0.90	1075	5/370	6.50	4.13	1/2
10733	1/4	208-230	1.8	1075	5/370	6.50	4.25	1/2
10734	1/3	208-230	2.4	1075	7.5/370	6.50	5.10	1/2
10735	1/2	208-230	3.5	1075	10/370	6.50	5.70	1/2
10736	3/4	208-230	5.2	1075	10/370	6.50	5.11	1/2

825 RPM

10203	1/6	208-230	1.0	825	5/370	5.50	4.10	1/2
10204	1/4	208-230	2.2	825	5/370	5.50	4.40	1/2
10205	1/3	208-230	1.9	825	7.5/370	5.50	5.10	1/2
10747	1/2	208-230	2.8	825	12.5/370	6.50	5.70	1/2