

MARS Solid State Devices

MARS SERIES **325**

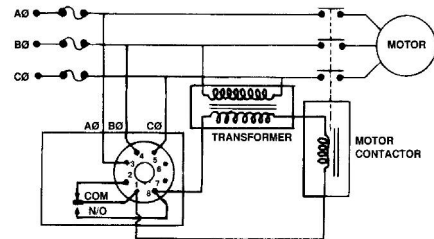


32532

MARS Phase Reversal Protector

Features:

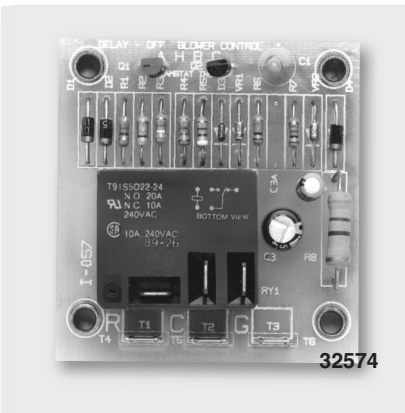
- Disconnects the motor pilot circuit on loss of one or more phases or when the voltage imbalance between any of the two phases exceeds 7%
- Re-energizes the pilot circuit only when all 3 phases are present and the voltage imbalance is less than 7%
- 208-277VAC, 50-60Hz
- Contact Rating: NO/NC (type "C") 5A/240V, 10A/120V
- 1/4" male spade terminals
- Compact design: 2.35" x 2.425" x 1.1"



Phase Reversal Protector

| MARS NO. | NOMINAL VOLTAGE | INPUT VOLTAGE | SPDT RELAY CONTACTS AMP RATING |
|----------|--|---------------|--------------------------------|
| 32532 | 240 VAC | 175-255 VAC | 10 amps res. |
| 32534 | 480 VAC | 380-500 VAC | 8 amps res |
| 93057* | 8 Pin Octal Base, 35mm Din Rail or Surface Mount | | |

* Base not included



Fan Time Delay Module

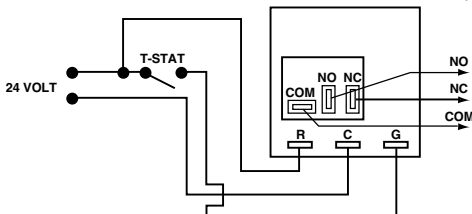
The MAHBC fan time delay module is a replacement for the direct motor control used by leading OEMs in high efficiency residential central air conditioning systems. The purpose of the control is to keep the blower motor running for 60 seconds after the thermostat has been satisfied. The result is an increase in residual cooling from the indoor coil without running the condensing unit, and thus, higher energy efficiency.

The MAHBC is ideal for retrofit where improved efficiency is desirable.

Features:

- Wide ambient temperature operating range -40°F to 175°F
- 1/4" male quick connect terminals
- Easy surface mount with four #6 screws
- UL and CSA recognized

Wiring Diagram



Cross Reference

| OEM | PART NO. |
|----------------|-------------|
| BARD | 8201-056 |
| RHEEM | 42-22515-01 |
| SNYDER GENERAL | 0001395336 |

| MARS NO. | MARS MODEL | VOLTAGE | OUTPUT | | TIME DELAY | ACTION |
|----------|------------|---------|--------|------|------------|--------|
| | | | 120V | 240V | | |
| 32574 | MAHBC | 24VAC | 1 HP | 2 HP | 60 SEC. | SPDT |