



SERVICE PARTS LIST

BULLETIN NO.
54-02-0230

SPECIFY CATALOG NO. AND SERIAL NO. WHEN ORDERING PARTS		REVISED BULLETIN	DATE
1 1/2 TON LEVER HOISTS			July '98
CATALOG NOS. 9685-20, 9686-20, 9687-20 and 9688-20	STARTING SERIAL NO. C-2NC	WIRING INSTRUCTION N/A	

00 0

EXAMPLE:
Component Parts
(Small #) Are Included
When Ordering The
Assembly (Large #).

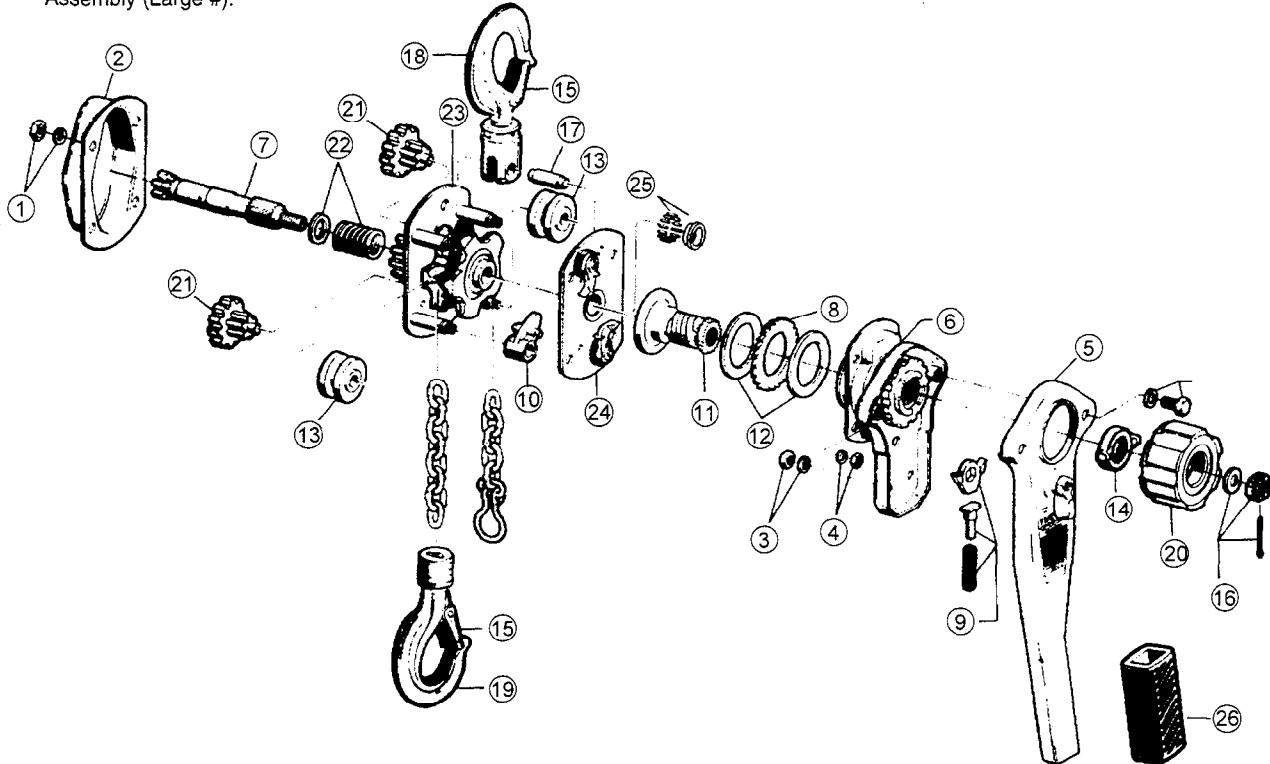


FIG.	PART NO.	DESCRIPTION OF PART	QTY
1	14-47-1010	Gear Cover Hardware Kit	(1)
2	42-92-1255	Gear Cover	(1)
3	14-47-1015	Brake Cover Hardware Kit	(1)
	N/A	(Brake Cover Incl. w/Lever Ratchet Hub)	
4	14-47-1020	Lever Hardware Kit	(1)
5	31-44-2150	Lever Assembly	(1)
6	42-92-1245	Lever Ratchet Hub	(1)
7	36-66-9689	Pinion Shaft	(1)
8	44-84-0305	Ratchet	(1)
9	14-47-1030	Hub Ratchet Pawl Kit	(1)
10	44-77-0140	Stripper	(1)
11	43-78-0550	Friction Hub	(1)
12	43-06-0705	Friction Disc	(2)
13	43-56-0600	Chain Guide Roller	(2)
14	43-56-0605	Cam Guide (1 1/2 and 3 Ton)	(1)
15	14-47-1035	Hook Latch Kit (1 1/2 Ton)	(2)

FIG.	PART NO.	DESCRIPTION OF PART	QTY
16	14-47-1025	Brake Nut Washer	(1)
17	44-60-1625	Upper Hook Pin	(1)
18	14-36-0305	Upper Hook Assembly	(1)
19	14-36-0290	Lower Hook Assembly	(1)
20	43-98-0635	Free Chaining Knob	(1)
21	32-60-2675	Gear Set	(1)
22	40-50-8928	Spring with Seat	(1)
23	14-47-1000	Side Plate Assembly (Gear Side)	(1)
24	14-47-1005	Side Plate Assembly (Brake Side)	(1)
25	14-47-1040	Bearing Kit	(1)
26	43-62-0257	Handle Grip	(1)
---	10-15-1525	Warning Tube (Spanish) (not shown)	(1)
---	10-15-1530	Warning Tube (French) (not shown)	(1)
---	12-20-9685	Capacity / Warning Label (not shown)	(1)
---	10-20-9700	Free Chaining Tag, English (not shown)	(1)
---	10-20-9705	Free Chaining Tag, French (not shown)	(1)
---	10-20-9710	Free Chaining Tag, Spanish(not shown)	(1)