



ENGINEERING EXCELLENCE

## Installation Guide

Single Handle Tub And Shower Trim Set:

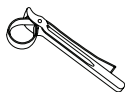
- 4CS100T
- 4CS200T
- 4CS300T

This product meets the following standards:

- ASME A112.18.1
- ANSI A117.1
- CUPC/ IAPMO LISTED/ ADA COMPLIANT

**Thank you for purchasing this Pioneer quality product.**

**Tools Required**



Strap Wrench

Teflon Tape

Thermometer

Allen Wrench

Plumbers Putty

**Prior to Installation**

- Observe all local plumbing and building codes before you begin installation.
- The finished wall and rough-in valve (4020B) must be installed prior to installing this trim.
- Shut off main water supply.
- Pioneer reserves the right to make changes in the design of faucets without notice as specified in the pricebook.

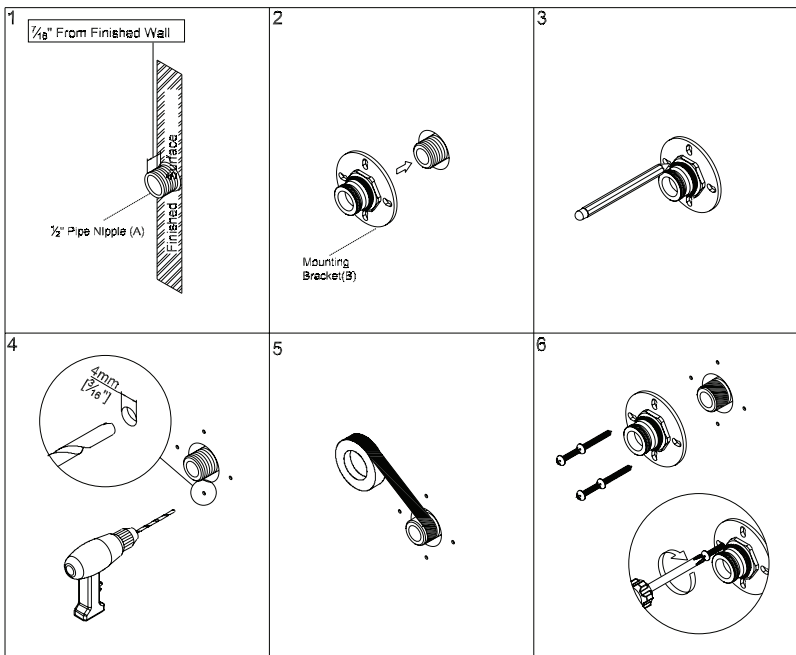
**Caution:** (1). These products may cause personal injury due to scalding if the temperature is set too high. We recommend that temperature is set below 120 ° F (49 ° C).

## Trim Installation

- **Caution:** To avoid plugging the showerhead spray outlet use teflon tape on the thread ends of 1/2" pipe nipple.
- Remove the temporary nipple.
- **For Shower Head and Tub Spout Installation:-**
  1. The 1/2" NPT pipe nipple(A) must be 7/16" from the finished surface.
  2. Thread the mounting bracket(B) on the 1/2" pipe nipple(A).
  3. Mark the four hole locations on the wall. Remove the mounting bracket(B)
  4. Drill 3/16" size holes at marked locations.
  5. Apply teflon tape on the 1/2" pipe nipple(A).
  6. Thread the mounting bracket(B) on the 1/2" pipe nipple(A). Ensure the mounting bracket touches finished surface. Tighten four supplies mounting screws to secure the mounting bracket(B) to the finished surface.

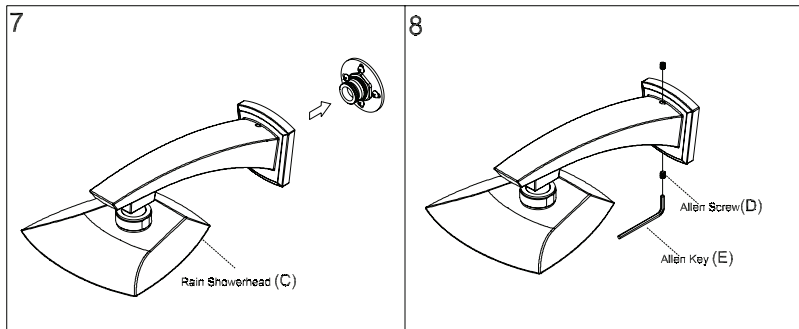
**Caution: To prevent personal injury, special caution must be used when handling and installing this showerhead. Showerhead trim must be firmly secured to a solid surface capable of supporting a minimum of 10 lbs. Installation on thin walls or dry walls without extra weight support is not recommended.**

## Trim Installation



## Trim Installation

- Slide the rain showerhead(C) on the mounting bracket(B) till against the finished wall.
- While holding the rain showerhead(C) carefully tighten top and bottom allen screws(D) with the help of supplied allen key(E). Make sure the rain showerhead is secured on the mounting bracket. And there is no damage to the O-rings on the mounting bracket.



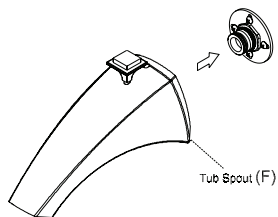
**Caution: To Prevent personal injury, special caution must be used when handling and installing this showerhead. Showerhead trim must be firmly secured to a solid surface capable of supporting a minimum of 10 lbs. Installation on thin walls or dry walls without extra weight support is not recommended.**

## Trim Installation

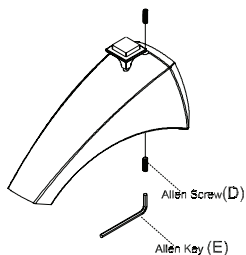
- Follow the same instructions from step 1 to 6 for mounting bracket installation. Slide the tub spout(F) on the mounting bracket(B). Ensure notches on the mounting bracket(B) match the notches on the tub spout.
- Tighten top and bottom allen screw(D) with the help of supplied allen key(E). Tighten both the allen screws simultaneously to avoid any inclination of the tub spout(F).

**Caution: To prevent personal injury, special caution must be used when handling and installing this product.**

9



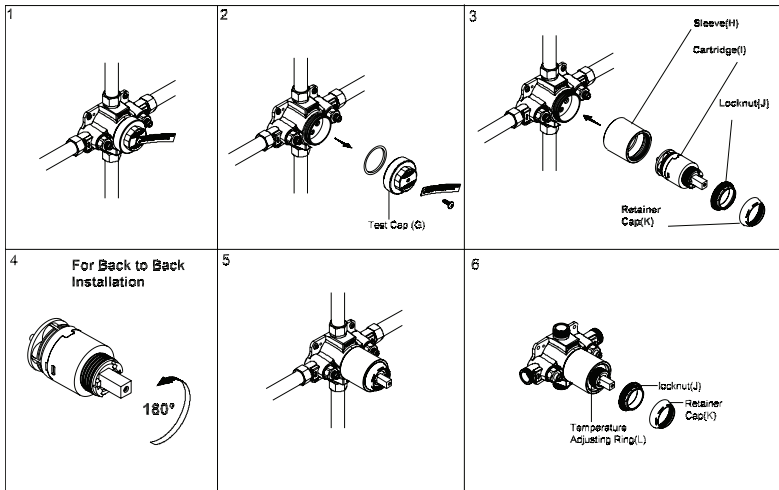
10



## Trim Installation

1. Turn off the main water supply
2. Remove test cap(G) with the help of 1-11/32" socket, relive the water pressure and ensure all the debris are flushed out of the system.
3. Thread sleeve(H) to the valve body. Insert the cartridge(I) to the valve body. Ensure the 'UP' symbol on the cartridge is on the top. Ensure the two notches underneath of the cartridge seats properly in the valve body. Hold the cartridge(I) and thread the locknut(J) to sleeve(H). Thread retainer cap(K) to locknut(J).
4. For back to back installation:- Rotate the cartridge 180 degree. Ensure 'B-B UP' symbol on the cartridge is on the top. Follow the instruction on 3 to install cartridge(I), sleeve(H), locknut(J), and retainer cap(K).
5. Turn on the main water supply. Check for any leak. Turn the cartridge(I) counterclockwise to the full open position. Allow water to run for some time until the hot water comes out. Check the temperature with thermometer for the hot water.
6. If necessary to reduce the hot water temperature then, turn off the main water supply. Remove the cartridge by removing retainer cap(K) and locknut(J). Turn red temperature adjusting ring(L) clockwise to decrease the temperature. Follow instruction 3 or 4 to reassemble the cartridge(I). Ensure the hot water temperature is set below 120 ° F.

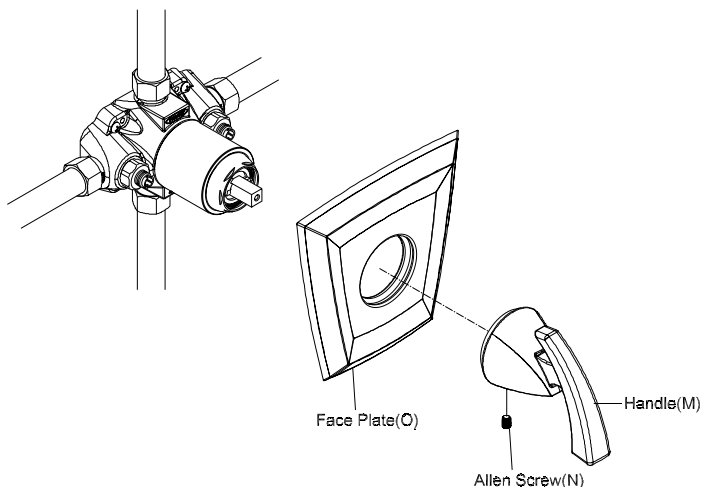
## Trim Installation





## Trim Installation

- Slide the face plate(O) on the valve sleeve.
- Use silicon to caulk around the face plate(O).
- Secure the handle(M) by tightening the allen screw(N). Ensure the handle rotates counterclockwise from cold to hot from 6 o'clock to 3 o'clock.



For more care information or trouble shooting inquiries about your Pioneer Product, please see the contact information on the back page.



ENGINEERING EXCELLENCE

3325 S. Garfield Ave. | Commerce, CA 90040  
Telephone: (800) 338-9468 | (323) 888-8873 | Fax: (323) 888-9515  
Hours: M - F, 7:30am to 5:00pm PST  
[www.pioneerind.com](http://www.pioneerind.com)