



ENGINEERING EXCELLENCE

## Installation Guide

### Single Handle Lavatory Faucet:

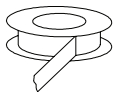
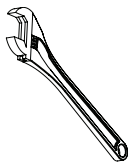
- |           |           |           |
|-----------|-----------|-----------|
| • 3VL161  | • 3MT166  | • 3MT178  |
| • 3VL160  | • 3MT168  | • 3MT180  |
| • 3VL161G | • 3MT170  | • 3MT181  |
| • 3MT160H | • 3MT171  | • 3MT181G |
| • 3MT161  | • 3MT171G | • 3MT160  |
| • 3MT161G | • 3MT176  |           |

### This product meets the following standards:

- ASME A112.18.1
- ANSI A117.1
- ANSI / NSF 61, SECTION 9
- CUPC / IAPMO LISTED / ADA COMPLIANT
- CONTAINS NO MORE THAN 0.25% WEIGHTED AVERAGE LEAD CONTENT

**Thank you for purchasing this Pioneer quality product.**

**Tools Required**



Adjustable  
Wrench

Teflon Tape

Rags

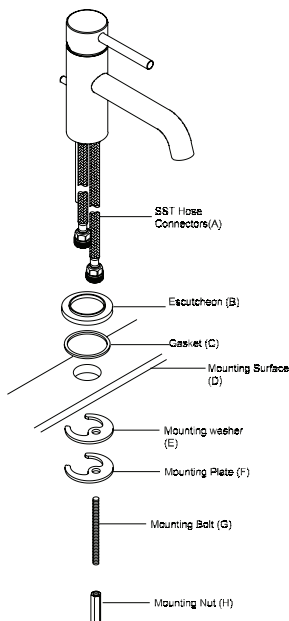
3/32" Allen  
Wrench

**Prior to Installation**

- Observe all local plumbing and building codes before you begin installation.
- Carefully shut off both hot and cold water supplies.
- Plug the sink drain with a soft cloth to prevent intrusion of debris or the loss of any parts.
- Pioneer reserves the right to make changes in the design of faucets without notice.

## Faucet Installation

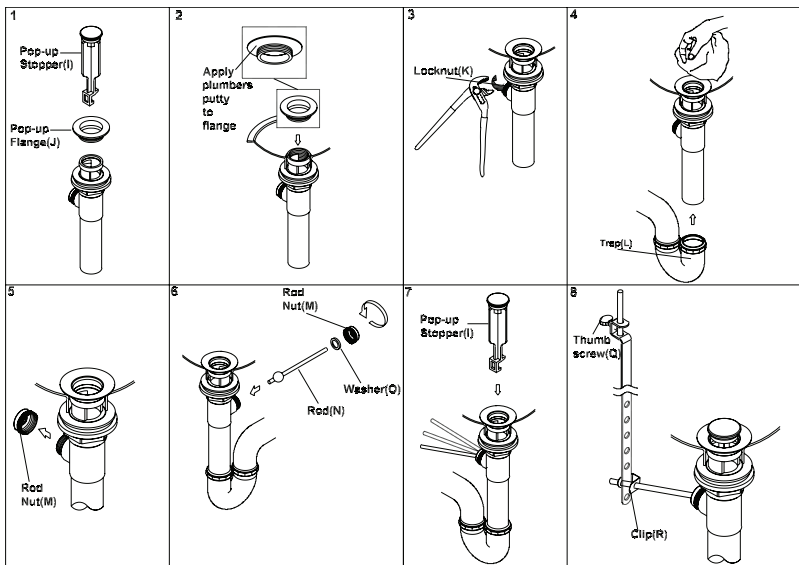
- Note:- The faucet escutcheon (B) is supplied with rubber gasket (C) to form watertight seal. Do not use rubber gasket (C) and plumbers putty both to form watertight seal.
- For single hole installation - lead the escutcheon (B) & rubber gasket (C) from underneath of the faucet, lead the SST hose connectors (A) through faucet mounting hole.
- For three hole installation - lead the deck plate ( the deck plate is supplied with the faucet for 3VL160, 3VL161 and 3VL161G) from underneath of the faucet. If the deck plate is not supplied with faucet and you required three hole installation. the deck plate can be purchased from the same location where this faucet was purchased.
- Thread the mounting bolt (G) into bottom of faucet from underneath to the mounting bolt (G). if it is supplied with the mounting kit.
- Slide the mounting washer (E) and mounting plate (F) from underneath.
- Thread the mounting nut (H) to the mounting bolt. Do not overtighten.



## Pop-up Drain Installation

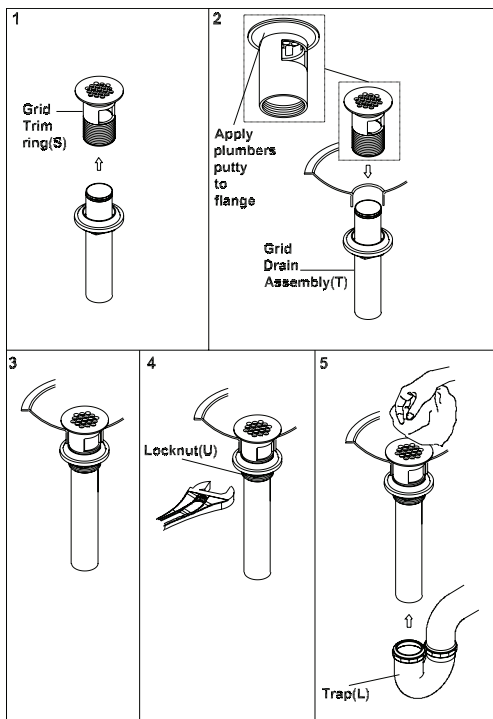
1. Remove the pop-up stopper (I) and pop-up flange (J) from the pop-up assembly.
2. Apply adequate amount of plumbers putty underside of pop-up flange(J). Then insert pop-up drain assembly from underside of the sink and secure the pop-up flange (J) from the top.
3. Rotate the drain body so that horizontal rod hole faces back of the faucet. Hold the pop-up assembly in place and tighten the locknut (K).
4. Remove the excess putty. Connect the trap (L). ( check manufacturer's instructions for installation)
5. Remove rod nut (M).
6. Ensure the washers (O) is in place. Insert rod (N). Tighten the rod nut (M).
7. Push rod down to open drain. Insert the pop-up stopper (I) carefully. Test if the pop-up stopper (I) is working properly.
8. Connect pop-up bracket to the rod using clip (R). Tighten the thumb-screw (Q) to connect pop-up bracket to pop-up lift rod.

## Pop-up Drain Installation



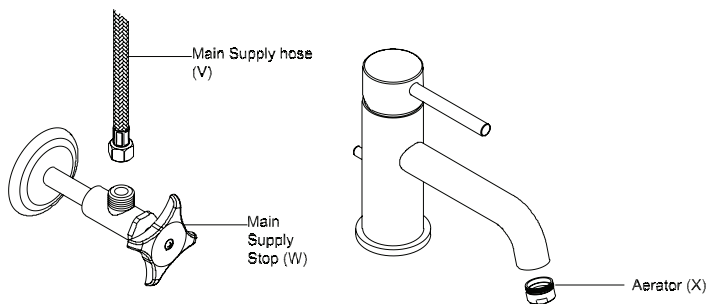
## Grid Drain Installation

1. Remove the grid trim ring (S) from the grid drain assembly (T).
2. Apply adequate amount of plumbers putty underside of the grid trim ring (S). Insert the grid drain assembly (T) under the lavatory sink. Attach the grid trim ring (S) from top of the drain hole.
3. Hold the grid trim ring (S) in place while threading the locknut (U) until the locknut is snug with the underside of lavatory sink.
4. Tighten the locknut (U).
5. Remove the excess putty. Connect the trap (L). (check manufacturer's instructions for installation)



## Main Supply Connection

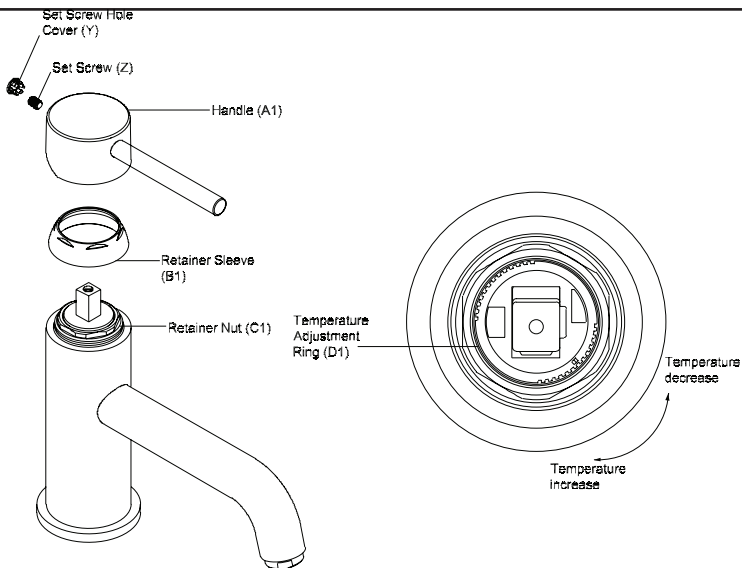
- Use main supply hoses (V) to connect SST hose connectors to the main supply stops (W). Tighten with adjustable wrench. Do not overtighten. Conventionally left is hot and right is cold.
- Turn on water. Check of any leaks. Make sure all the connection are secure.
- Remove the aerator (X).
- Make sure the pop-up drain is open. Turn on the handle.
- Flush and allow water to run at full flow for at least one minute.
- Turn off water. Replace aerator (X).



## To Set or Adjust Temperature Limit Stop

**Caution:** Valve is preset at the factory test at maximum. Adjust as necessary. Please see the instructions below:

- Turn off water and relieve the pressure.
- Remove handle (A1) by removing set screw hole cover (Y) and loosening set screw (Z), lift off the handle.
- Unscrew retainer sleeve (B1) and retainer Nut (C1) counterclockwise.
- Use two fingers raise the red adjustment ring (D1).
- Turn adjustment ring counterclockwise to decrease the temperature setting and clockwise to increase the temperature. Replace the adjusting ring.
- Reassemble and test until desired safe temperature is reached. (Note: Ensure proper alignment of cartridge with notch in valve body.)



For more care information or trouble shooting inquiries about your Pioneer Product, please see the contact information on the back page.





ENGINEERING EXCELLENCE

3325 S. Garfield Ave. | Commerce, CA 90040  
Telephone: (800) 338-9468 | (323) 888-8873 | Fax: (323) 888-9515  
Hours: M - F, 7:30am to 5:00pm PST  
[www.pioneerind.com](http://www.pioneerind.com)