


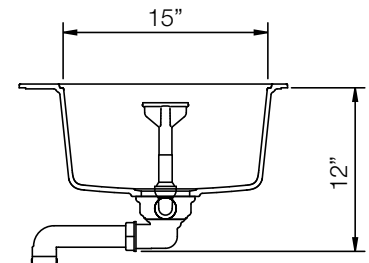
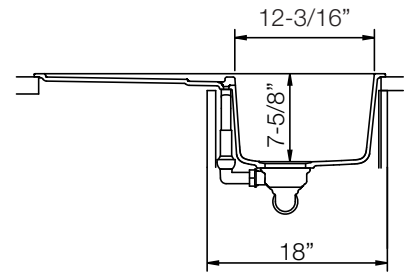
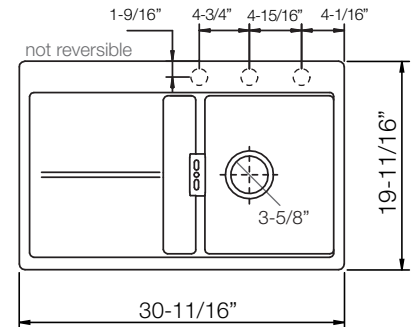
## HORIZONT D-100

### FEATURES

- Available in CRISTADUR®
- ProHygienic 21** - Non-porous finish leaves no place for bacteria to thrive
- Food-safe** - due to patented **ProHygienic 21**
- Stain-resistant** - Food stains cannot stick
- Heat Proof** - Not temperature sensitive (+535°F)
- Pre-scored faucet holes (3)
- 3 times harder than natural granite
- cUPC certified
- Available in 3 colors , not reversible
- Limited Lifetime Warranty
- Made in Germany 

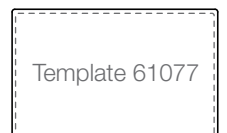
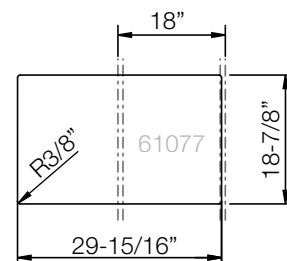


### MEASUREMENTS IN INCHES



Topmount

Undermount/ Flush



### CRISTADUR®

<b>Magma</b> (097) Metallic	<b>Bronze</b> (087) Metallic	<b>Earth</b> (082) Metallic
-----------------------------------	------------------------------------	-----------------------------------

Fits 18" Cabinet not reversible	Bowl Depth 7-5/8"	Bowl 12-3/16" x 15"	Drain Kit Included
Overall 30-11/16" x 19-11/16"	Topmount Undermount Flushmount	Faucet holes 1-3/8"	3-5/8" Drain Hole

### SPECIFICATION SUBMITTAL

PROJECT NAME: \_\_\_\_\_

ARCHITECT/ENGINEER: \_\_\_\_\_

CONTRACTOR: \_\_\_\_\_

MODEL: **HOND100T** \_\_\_\_\_ (COLOR CODE). QTY: \_\_\_\_\_

NOTES: \_\_\_\_\_

Installation Notes:  
Countertop manufacturer or fabricator must use the cut-out template provided with the product and compare it with the physical product. SCHOCK NORTH AMERICA is not responsible for errors made when incorrect template is used.