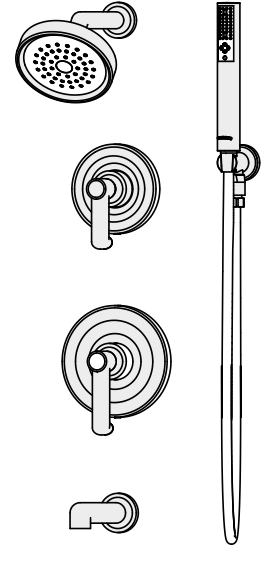


Location:



Tub-Shower & Hand Shower System 5306 Specification Submittal



Feature Highlights

- Symmons Tub-Shower & Hand Shower System with lever handles
- Symmons Temptrol® pressure-balancing mixing valve with adjustable stop screw to limit handle turn
- Separate triple outlet diverter valve with lever handle
- Showerhead, single mode #532SH
- Showerhead mounting bracket and flange
- Wall/hand shower, two modes #532HS with 5 foot flexible metal hose, in-line vacuum breaker, wall connection and cradle for hand shower mounting
- Standard flow rate is 2.5 gpm (9.5 L/min)
Optional lower flow rate restrictor available
- Tub spout, brass, #T-671
- Polished chrome finish (standard)

Model Numbers

- 5306
Tub-Shower and Hand Shower System with Symmons Temptrol® pressure-balancing mixing valve
p/n 4000-BODY and triple outlet diverter
p/n 4-460E-BODY
- 5306-TRM
Trim only, valve and diverter ordered separately
- 4000-BODY
Symmons Temptrol® mixing valve without trim
- 4000-X-BODY
Symmons Temptrol® mixing valve without trim.
Valve includes integral service stops to allow water shut-off for service
- 4-460E-BODY
Symmons triple outlet diverter valve without trim

Finish Options / Modifications

Append appropriate -suffix to model number

- STN Satin nickel
- BLK Polished graphite
- Polished chrome (standard finish)

Options / Modifications

Append appropriate -suffix to model number

- IPS 1/2 inch female IPS connections on Symmons Temptrol® mixing valve
- X Symmons Temptrol® mixing valve includes integral service stops to allow water shut-off for service, p/n 4000-X-BODY. (Option only applies when ordering model 5306)
- REV Reverse coring in valve for back to back installations; hot on right, cold on left, (available with (-X) integral stops only)
- 2.0 2.0 (7.6 L/min) flow rate restrictor
- 1.5 1.5 (5.7 L/min) flow rate restrictor
- L/HD Showerhead not included
(Includes showerhead arm and flange only)
- L/HS Hand Shower wand not included
(Includes hose, in-line vacuum breaker, wall connections and flange only)
- R Vinyl hose in place of flexible metal hose
- 6 6 foot hose in place of standard 5 foot hose
- QD Quick-disconnect at hand shower wall connection

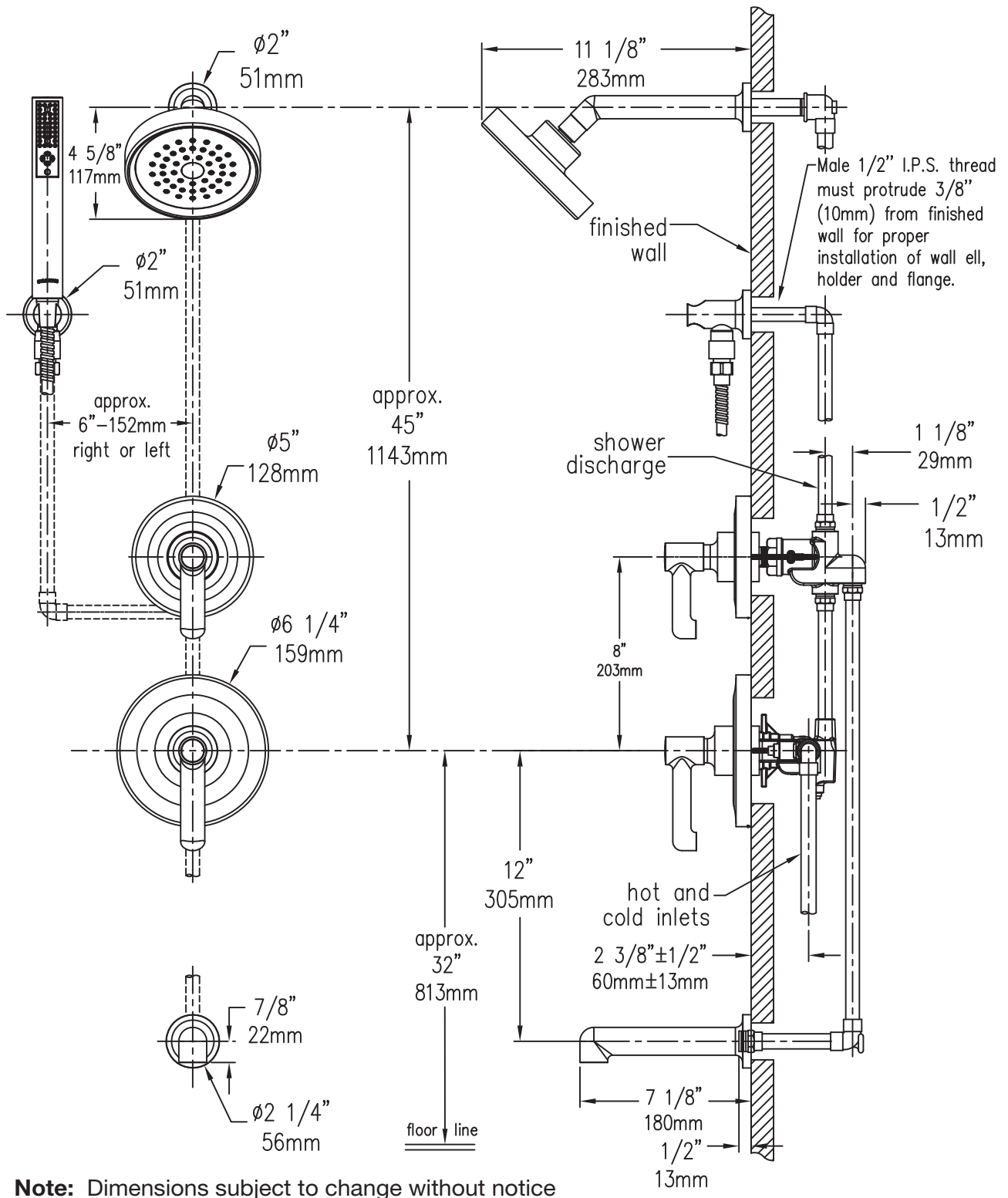
Standards / Certifications

ASME A112.18.1-2005/CSA B125.1-05

Warranty

- Limited Lifetime - to the original end purchaser in consumer installations
- 5 years - for commercial installations

Dimensions Museo Tub-Shower & Hand Shower System, 5306



Symmons Industries, Inc. ■ 31 Brooks Drive ■ Braintree, MA 02184
 (800) 796-6667, (781) 848-2250 ■ Fax (800) 961-9621, (781) 664-1300
 Website: www.symmons.com ■ Email: customerservice@symmons.com

©2010 Symmons Industries, Inc. Printed in U.S.A. ■ 060410 ■ ZV-846

