


Location:



# Tub & Hand Shower System S-5404

## Specification Submittal

### Feature Highlights

- Symmons Tub & Hand Shower System with lever handle
- Symmons Temptrol® pressure-balancing mixing valve with adjustable stop screw to limit handle turn
- Secondary integral volume control handle
- Wall/hand shower #512HS, single mode with 5 foot flexible metal hose, in-line vacuum breaker, wall connection and cradle for hand shower mounting
- Standard flow rate is 2.5 gpm (9.5 L/min)  
*Optional lower flow rate restrictor available* 
- Tub spout #542TS
- Polished chrome finish (standard)

### Model Numbers

- S-5404  
Tub & Hand Shower System with Symmons Temptrol® mixing valve p/n S-4002-BODY
- S-5404-TRM  
Trim only, mixing valve ordered separately
- S-4002-BODY  
Symmons Temptrol® mixing valve without trim
- S-4002-X-BODY  
Symmons Temptrol® mixing valve without trim. Valve includes integral service stops to allow water shut-off for service

### Finish Options / Modifications

Append appropriate -suffix to model number

- STN Satin Nickel
- ORB Oil Rubbed Bronze
- Polished Chrome (standard finish)



### Standards / Certifications

ASME A112.18.1-2005/CSA B125.1-05



### Options / Modifications

Append appropriate -suffix to model number

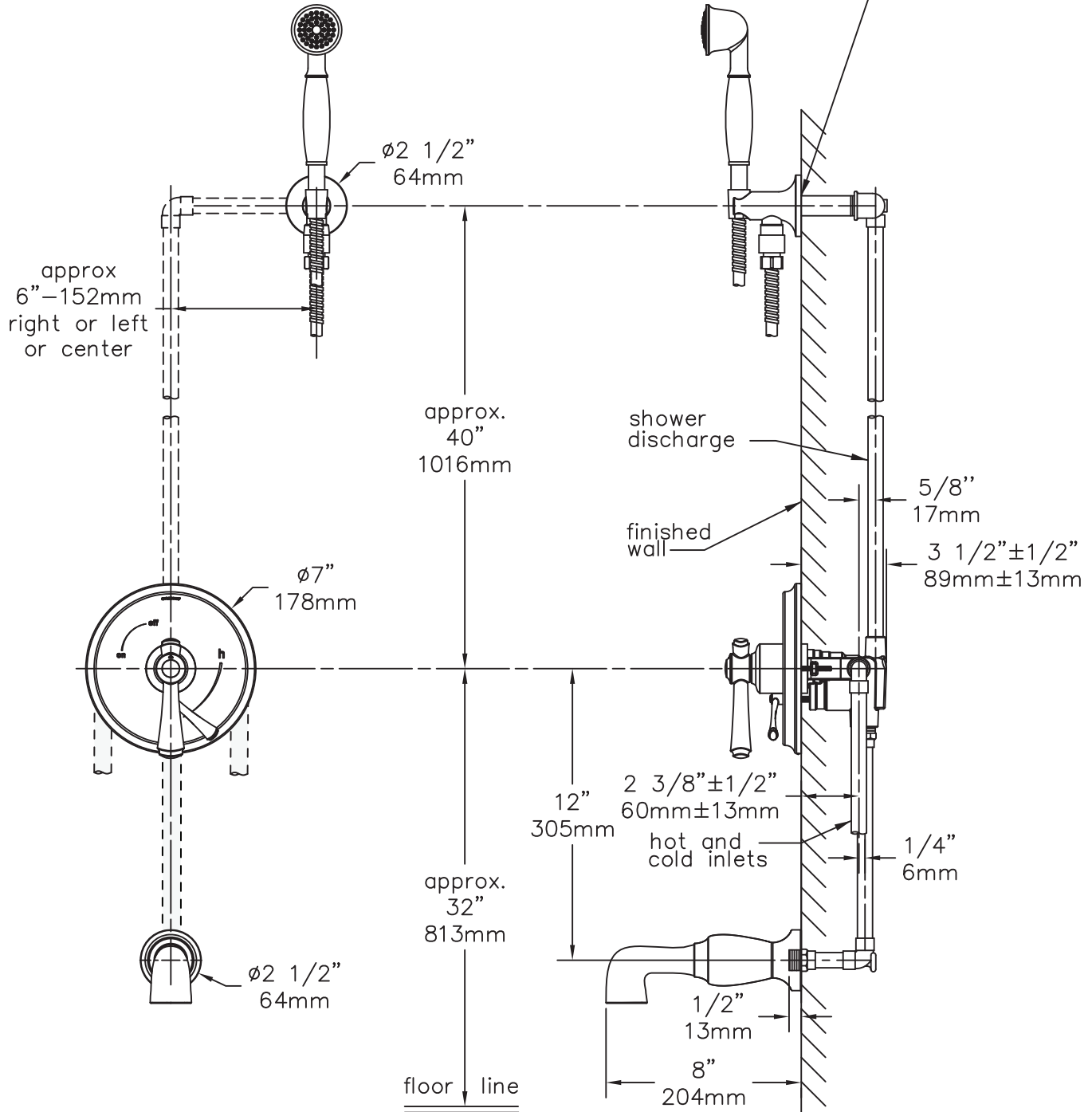
- IPS 1/2 inch female IPS connections on Symmons Temptrol® mixing valve  
*(not available with -X integral service stops)*
- X Integral service stops included with Temptrol mixing valve to allow water shut-off for service, p/n S-4002-X-BODY *(option only applies when ordering model S-5404)*
- REV Reverse coring in valve for back to back installations; hot on right, cold on left  
*(only available with -X integral service stops)*
-  -2.0 2.0 (7.6 L/min) flow rate restrictor
-  -1.5 1.5 (5.7 L/min) flow rate restrictor
- L/HS Hand shower wand not included  
*(includes hose, in-line vacuum breaker, wall connections and flange only)*
- 72 6 foot flexible metal hose in place of 5 foot
- R60 5 foot vinyl hose in place of flexible metal hose
- R72 6 foot vinyl hose in place of flexible metal hose
- QD Quick-disconnect at hand shower wall connection

### Warranty

- Limited Lifetime - to the original end purchaser in consumer installations
- 5 years - for commercial installations

## Dimensions Degas Tub and Hand Shower System, S-5404

Male 1/2" I.P.S. thread must protrude 3/8" (10mm) from finished wall for proper installation of wall ell and cradle.



Symmons Industries, Inc. ■ 31 Brooks Drive ■ Braintree, MA 02184  
 (800) 796-6667, (781) 848-2250 ■ Fax (800) 961-9621, (781) 664-1300  
 Website: [www.symmons.com](http://www.symmons.com) ■ Email: [customerservice@symmons.com](mailto:customerservice@symmons.com)

©2011 Symmons Industries, Inc. Printed in U.S.A. ■ ZV-1112 ■ 050211

**SYMMONS**<sup>®</sup>  
 the smart choice<sup>™</sup>