

INSTALLATION INSTRUCTIONS



For more information contact...

WOODFORD MANUFACTURING COMPANY

2121 Waynoka Road, Colorado Springs, Colorado 80915 • Phone: (800) 621-6032 • Fax: (800) 765-4115

To view our complete product line visit: www.woodfordmfg.com or email: sales@woodfordmfg.com

A Division of WCM Industries, Inc.

Model 65 & 67 Automatic Draining Wall Hydrant

Rev 08/12 Form No. II65.103



Model 65 with Single Check
Vacuum Breaker



Model 67 with Double Check
Backflow Preventer

FIGURE 1

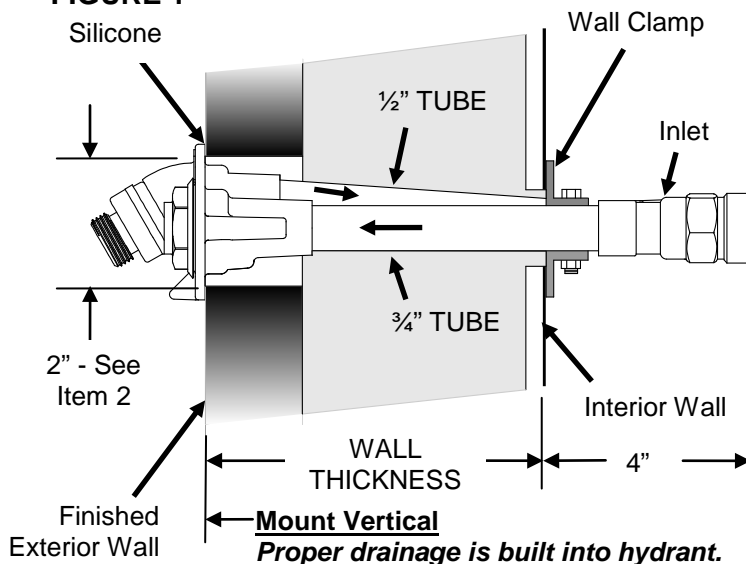
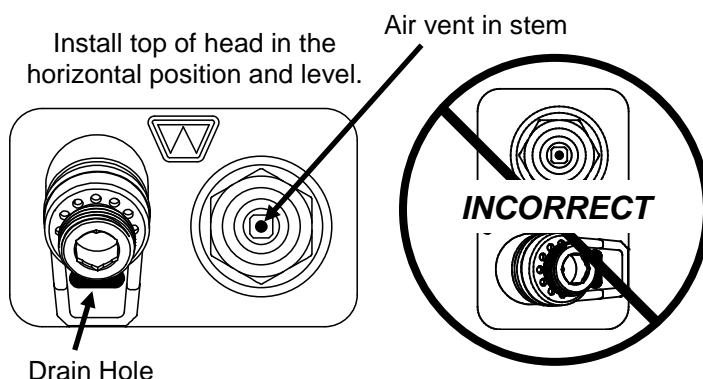


FIGURE 2



The hydrant must be properly installed and operated to insure drainage. Improperly installed or operated hydrants may freeze and burst in freezing weather.

INSTALLATION INSTRUCTIONS:

1. Before installation, flush supply line to remove any debris.
2. Cut a 2" X 3 7/8" opening through the wall in the desired location and insert the faucet from the outside. FIGURE 1
3. Install top of head in the horizontal position and level. *Do not install in vertical position.* FIGURE 2
4. *Note: Proper drainage is built into hydrant: FIGURE 1 (1/2" tube must slope slightly down toward inlet.) (3/4" tube must be level.)*
5. Apply silicone or equivalent to seal and help support hydrant FIGURE 1
6. Air vent in stem **must not** be plugged to ensure proper draining. FIGURE 2
7. Hydrant Inlet must be in a warm area. FIGURE 1
8. Install adjustable Wall Clamp over water tubes and slide snug to interior wall. FIGURE 1

Note: For solder connection, open hydrant to full open position before soldering. Excessive heat can damage valve seat rubber.

OPERATING INSTRUCTIONS:

To **OPEN**, turn stem counter-clockwise

To **CLOSE** and **DRAIN**, turn stem clockwise until seated and water drains out the drain hole.

INSTALLATION INSTRUCTIONS



For more information contact...

WOODFORD MANUFACTURING COMPANY

2121 Waynoka Road, Colorado Springs, Colorado 80915 • Phone: (800) 621-6032 • Fax: (800) 765-4115

To view our complete product line visit: www.woodfordmfg.com or email: sales@woodfordmfg.com

A Division of WCM Industries, Inc.

Rev 08/12 Form No. IIB65.102

Model B65 & B67 Box Type - Automatic Draining Wall Hydrant



Model B65 with Single Check
Vacuum Breaker



Model B67 with Double Check
Backflow Preventer

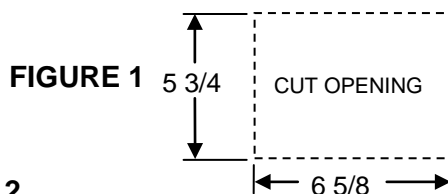


FIGURE 1

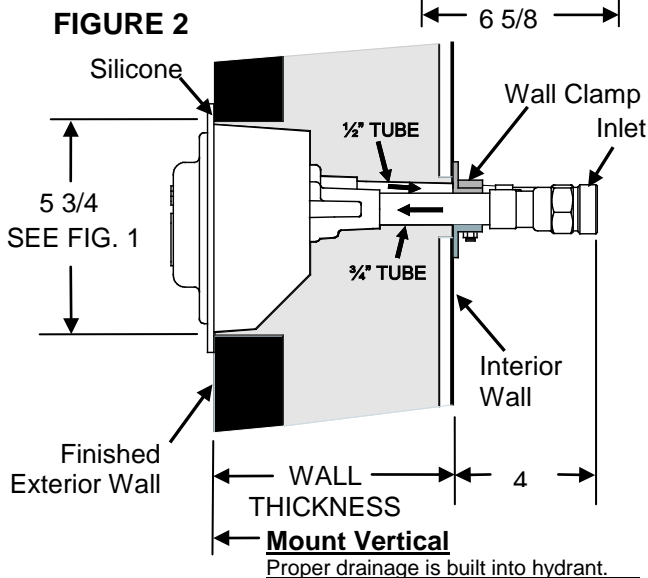


FIGURE 2

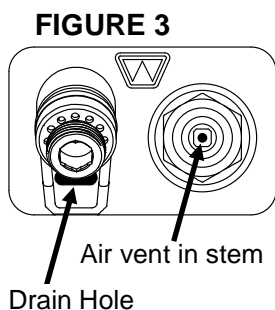


FIGURE 3



EXAMPLE: B65 or B67
installed in a block wall.

The hydrant must be properly installed and operated to insure drainage. Improperly installed or operated hydrants may freeze and burst in freezing weather.

INSTALLATION INSTRUCTIONS:

1. Before installation, flush supply line to remove any debris.
 2. Cut a 5 3/4 X 6 5/8 opening through the wall in the desired location. FIGURE 1
 3. Apply silicone or equivalent behind the box flange to seal and help support hydrant. FIGURE 2
 4. Insert the box and faucet assembly from the outside. FIGURE 2
 5. The top box flange must be installed in the horizontal position and level. Do not install in vertical position. FIGURE 2
- Note: Proper drainage is built into hydrant:
(1/2 tube must slope slightly down toward inlet.)
(3/4 tube must be level.)
6. The hydrant Inlet must be located in a warm area of the building interior. FIGURE 2
 7. Install adjustable Wall Clamp over water tubes and slide snug to interior wall. FIGURE 2
 8. The operating stem air vent must not be plugged to ensure proper draining. FIGURE 3

Note: For solder connection, open hydrant to full open position before soldering. Excessive heat can damage valve seat rubber.

OPERATING INSTRUCTIONS:

Use Tee Key to lock/unlock door and operate hydrant. To **OPEN**, turn stem counter-clockwise. To **CLOSE** and **DRAIN**, turn stem clockwise until seated and water drains out the drain hole.

