



Freezeless Yard Hydrant Model W34

W34 hydrants are intended for irrigation purposes and used for filling field spray equipment, cleaning tools and equipment, lawn and garden care, watering livestock, fire protection - immediate water flow even in sub-zero temperatures.

Features:

One Piece Variable Flow Plunger - Large cushion type seal for longer life - is not easily damaged and assures shut-off even when foreign particles are present.

Maintenance & Repair - All repairs can be made from top of unit without removing hydrant from the ground.

Tamper Proof Lock - Can be locked in closed position by inserting padlock or bolt through hole in link.

Long Life Packing - Graphite packing for lubricity and long life.

Long Life Valve Seat - Special shape - large contact area - eliminates need for renewable nylon seat.

Specifications:

Female Inlet: 3/4" NPT

Casing: 1" Galvanized Steel Pipe

Operating Rod: 3/8" Galvanized Steel Pipe

Drain Hole: Tapped - 1/8" N.P.T.

Removable Nozzle: 3/4" Brass Male Hose Nozzle

Optional: At additional cost
1" brass pipe outer casing
3/8" brass pipe operating rod
1" hose nozzle (10007)

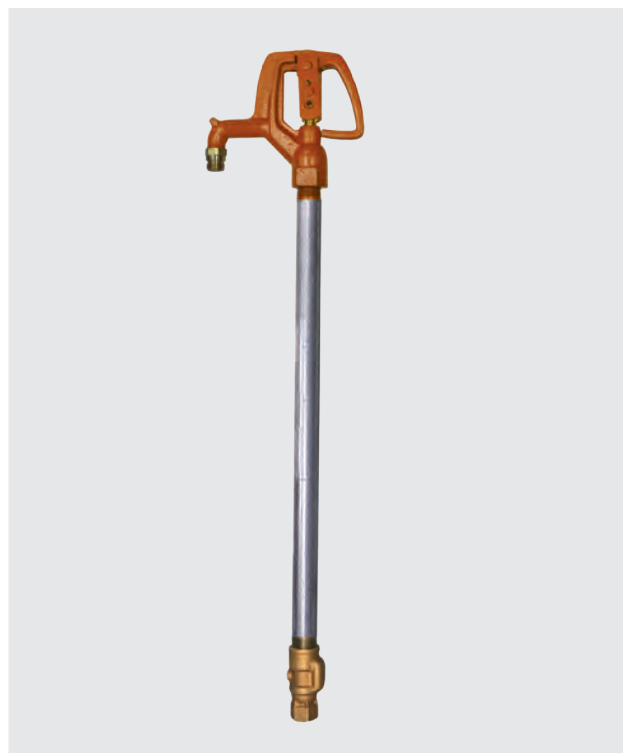
Maximum Working Pressure: 125 p.s.i.

Maximum Temperature: 120° F

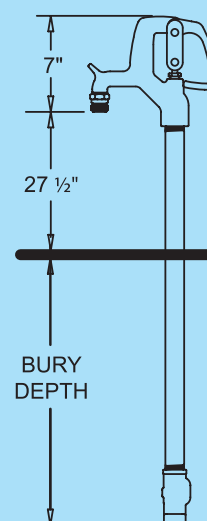
SHIPPING WEIGHT

| Bury Depth (Ft) | 1 | 2 | 3 | 4 | 5 | 6 | 7* |
|-----------------|----|----|----|----|----|----|----|
| Weight (Lbs) | 14 | 16 | 18 | 20 | 22 | 24 | 26 |

*Must ship by truck line due to length.

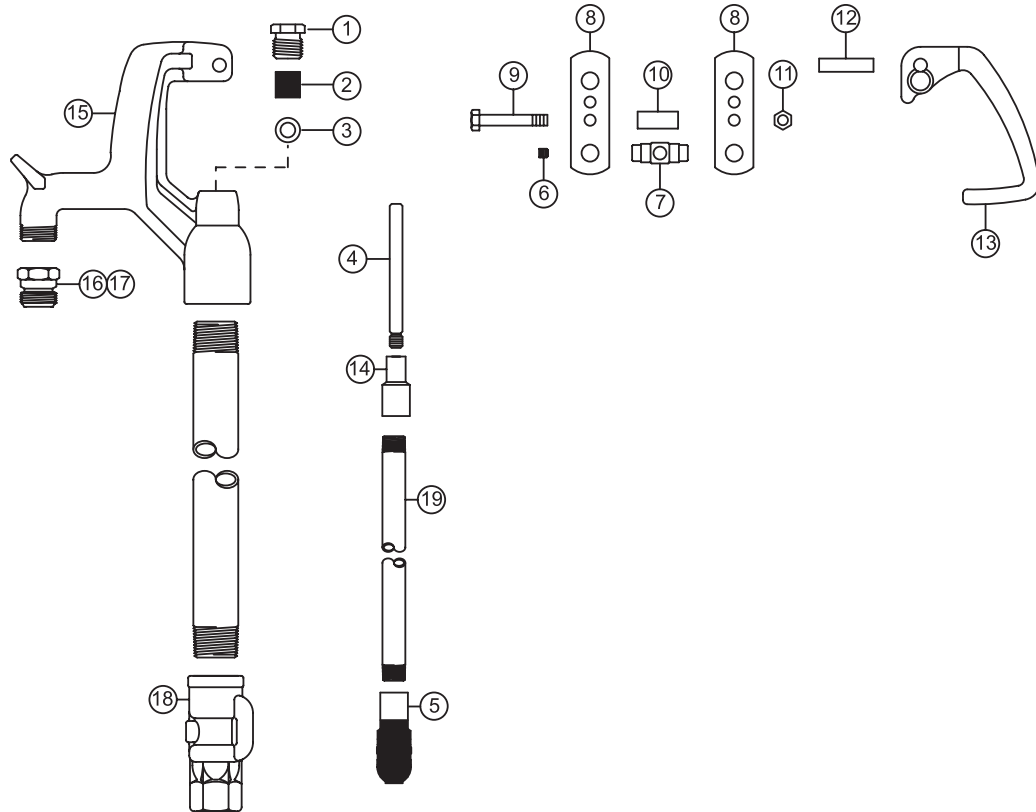


Rough-In Dimensions



**For Installation / Troubleshooting Instructions go to
www.woodfordmfg.com or call 1-800-621-6032**

When ordering, specify model and bury depth.

WOODFORD

MODEL W34 PARTS LIST

| ITEM | PART# | DESCRIPTION |
|------|-------|---|
| | 15039 | Head Assembly - Complete (Includes Items 1-4, 6-16) |
| 1 | 10100 | Packing Nut |
| 2 | 10101 | Packing |
| 3 | 10102 | Packing Support Washer |
| 4 | 10104 | Brass Rod Stem |
| 5 | 10105 | Plunger |
| 6 | 10158 | Pivot Set Screw |
| 7 | 10159 | Pivot |
| | 15050 | Pivot Assembly (Includes Items 6 & 7) |
| 8 | 10144 | Steel Link (2 Req'd) |
| 9 | 10157 | Link Bolt |
| 10 | 10146 | Link Spacer |
| 11 | 10206 | Link Bolt Nut |
| 12 | 10142 | Handle Pin |
| 13 | 10211 | Handle |
| 14 | 10011 | Reducing Coupling |
| 15 | 15040 | Head & Nozzle Assembly (Includes Item 16) |
| 16 | 10004 | ¾" Brass Hose Nozzle (Standard) |
| 17 | 10007 | 1' Brass Hose Nozzle (Optional) |
| 18 | 10018 | Valve Body |

| ITEM | PART# | DESCRIPTION |
|------|------------|---|
| 19 | W34 - 3/8" | Operating Pipe (Bury Depth & Length) |
| | 10023 | 1' Bury (35 ½" Long) |
| | 10024 | 2' Bury (47 ½" Long) |
| | 10025 | 3' Bury (59 ½" Long) |
| | 10026 | 4' Bury (71 ½" Long) |
| | 10027 | 5' Bury (83 ½" Long) |
| | 10028 | 6' Bury (95 ½" Long) |
| | 10029 | 7' Bury (107 ½" Long) |
| | RK-W34 | Repair Kit (Includes Items 1-7) |
| | RK-WXL | Steel Link Repair Kit (Includes Items 8 - 11) |

Woodford
Excellence
 Since 1929
 Proudly Made In The U.S.A.

For more information contact...

WOODFORD MANUFACTURING COMPANY

2121 Waynoka Road, Colorado Springs, Colorado 80915 • Phone: (800) 621-6032 • Fax: (800) 765-4115

To view our complete product line visit: www.woodfordmfg.com or email: sales@woodfordmfg.com

A Division Of WCM Industries, Inc.