

- CL-902C** **CL-902CJP**
 CL-902BN **CL-902BNJP**

Two Handle Roman Tub Faucet



FEATURES & BENEFITS

- Acrylic Round Handles
- Ceramic Cartridges
- Min Flow Rate 4.0 GPM(15.1 LPM) at 60 PSI (ASME.A112.18.1)

APPROVALS:

Meets or Exceeds The Following:

- * ANSI/ASME A112.18.1
- * IAPMO/UPC

CL-902C
Chrome Finish

CL-902BN
Brushed Nickel Finish

CL-902CJP
Trim Kit For Roman Tub
Chrome Finish

CL-902BNJP
Trim Kit For Roman Tub
Brushed Nickel Finish



CALIFORNIA:
TEXAS:
NEW YORK:

TEL: 866-532-8306
TEL: 800-935-5456
TEL: 800-431-2082

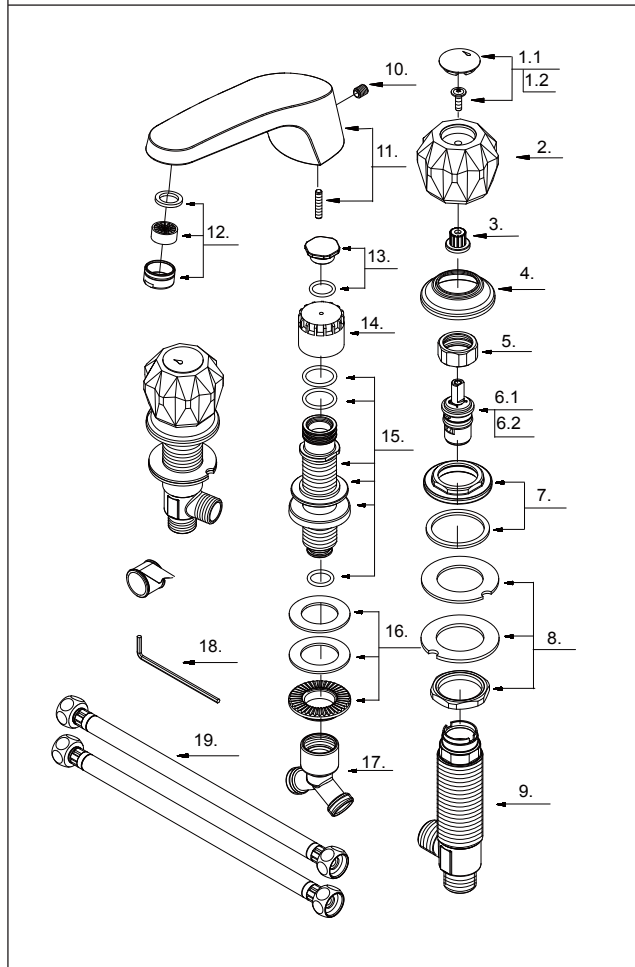
FAX: 866-532-8307
FAX: 800-683-4247
FAX: 800-640-2252

CL-902C **CL-902CJP**
 CL-902BN **CL-902BNJP**

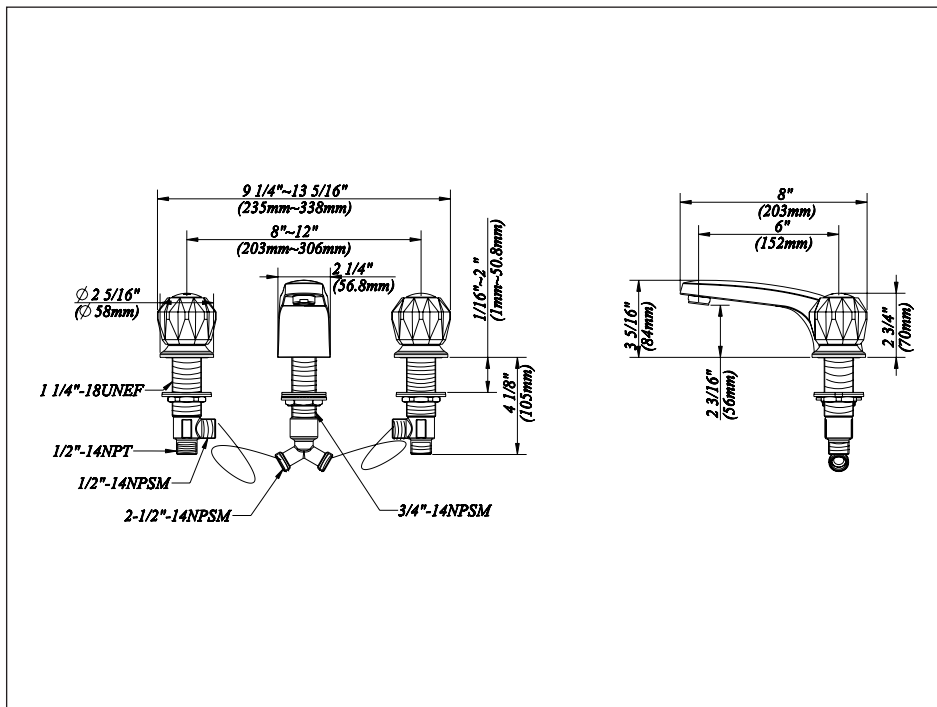


Two Handle Roman Tub Faucet

No.	Name	Material
1.1	Index Button- Cold	Plastic
1.2	Index Button-Hot	Plastic
2	Acrylic Handle	Acrylic
3	Handle Adapter	Plastic
4	Handle Trim Ring	Zinc Alloy
5	Retainer Nut	Brass
6.1	Ceramic Disc Cartridge-Cold	Ceramic & Brass
6.2	Ceramic Disc Cartridge-Hot	Ceramic & Brass
7	Lock Nut	Plastic & Brass
8	Mounting Hardware	Plastic & Brass
9	Handle Valve Body	Brass
10	Screw (5/16" -18 UNC-2B * 3/8" L)	Stainless Steel
11	Spout Set	Brass
12	Aerator	Plastic & Brass
13	Spout Plug	Brass
14	Spout Rough In Cap	Plastic
15	Spout Body	Brass
16	Mounting Hardware	Brass & Rubber
17	"Y" Adaptor	Brass
18	Hex Wrench (H4 * 20 mm L * 70 mm L)	Stainless Steel
19	Supply Hose	Stainless Steel



Product Spec Sheet



APPROVALS:

Meets or Exceeds The Following:

- * ANSI/ASME A112.18.1
- * IAPMO/UPC

CALIFORNIA: TEL: 866-532-8306 FAX: 866-532-8307
TEXAS: TEL: 800-935-5456 FAX: 800-683-4247
NEW YORK: TEL: 800-431-2082 FAX: 800-640-2252

Visit Our Web Site : www.matco-norca.com