



Buy it for looks. Buy it for life.®

# Specifications

## DESCRIPTION

- Digital thermostatic valve design with integral checkstops and 1/2" push fit connections

## OPERATION

- Temperature range adjustment from 60 degrees F to 120 degrees F (16 degrees C to 49 degrees C). Factory maximum setting is 115 degrees (46 degrees C)
- Must be used with controller T3405 or T3415 series
- Valve must be installed in an area that has an access panel

## FLOW

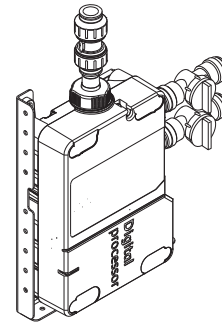
- Designed to deliver 10 gpm at 60 psi unrestricted flow (38L/min)

## STANDARDS

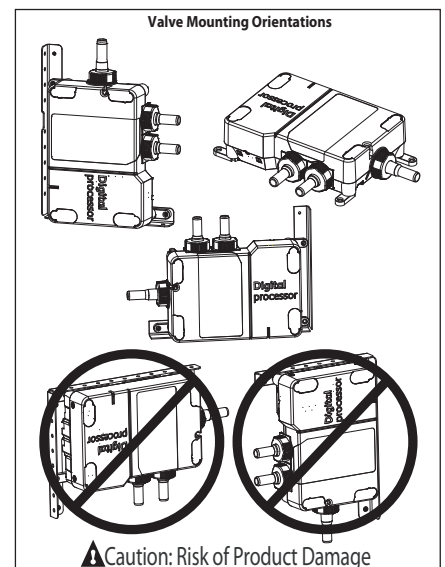
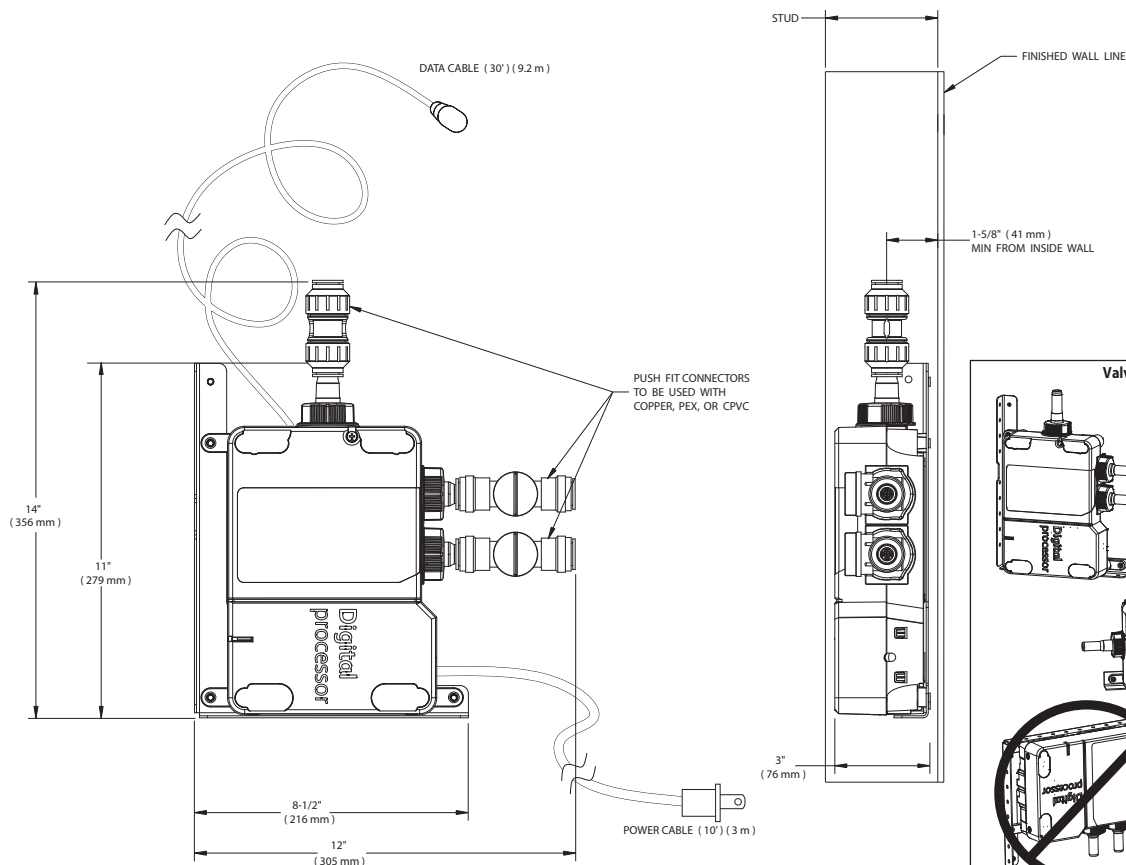
- Third party certified to meet ASME A112.18.1/CSA B-125.1 and all applicable requirements referenced therein including ASSE 1016
- Third party certified to meet UL1951
- Third party certified to meet FCC part 15

## WARRANTY

- 5 year warranty against leaks, drips and operation defects to the original consumer purchaser
- 1 year warranty if used in commercial installations



**ioDIGITAL™**  
**Shower Valve**  
**Model: 3381**



## CRITICAL DIMENSIONS

(DO NOT SCALE)