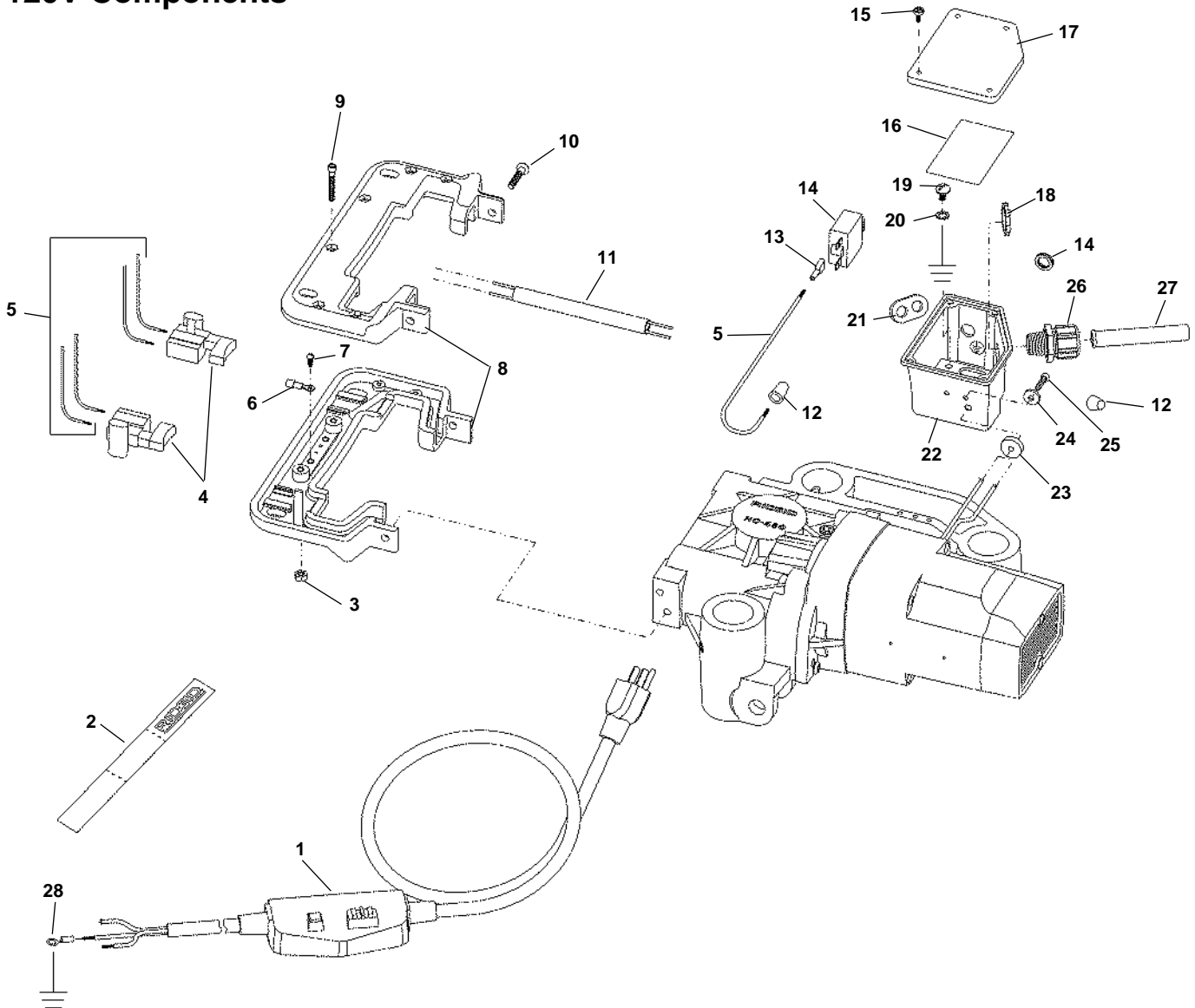


120V Components



**NOTE: Order parts by Catalog Number only.
DO NOT order by Reference Number.**

Ref. No.	Catalog No.	Description	Ref. No.	Catalog No.	Description	Ref. No.	Catalog No.	Description
1	50502	Power Cord w/GFCI	11	59342	Insulator Tube	20	46985	Lock Washer #10
2	59097	Cinch Strap	12	44635	Wire Nut (2)	21	59402	Seal
3	44695	Hex Nut, #10-24 (6)	13	59007	Terminal Set	22	59122	Junction Box
4	59317	Switch, 120V (2)	14	61302	Circuit Breaker, 15 Amp	23	59397	Gasket
5	77027	Wire Set	15	60575	Screw, #6-32 x 3/8" (4)	24	90812	Washer
6	83895	Ring Terminal #6 (2)	16	58982	Wiring Decal	25	93595	Screw, Self Tap (2)
7	46980	Screw, #6-32 x 5/16" (2)	17	72147	Cover Plate, 120V	26	65602	Strain Relief
8	59257	Handle Set	18	65642	Lock Nut 1/2" NPT	27	77002	Cord Guard
9	93680	Soc Hd Cap Screw, #10-24 x 1" (8)	19	59192	Screw, #10-24 x 1/2" FH Soc	28	26292	Ring Terminal
10	32205	Soc Hd Cap Screw, 1/4"-20 x 5/8" (4)						