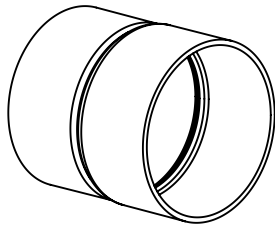
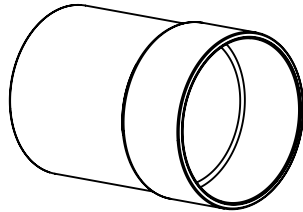


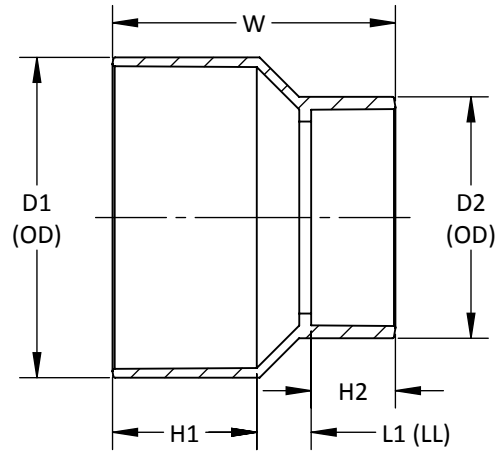
MOLDED



FABRICATED (APPEARANCE MAY VARY)



ASSEMBLED FROM  
MOLDED COMPONENTS



ASTM D3034, CSA B182.2  
ASTM D2665, F1866, CSA B181.2  
WHERE APPLICABLE

**DWV ADAPTER COUPLING HxH (SDR 35)  
SOLVENT WELD SEWER HUB x SOLVENT WELD DWV HUB**

PART NO.	SIZE IN INCHES	L1	H1	H2	W	D1	D2
* P655	4 x 3	15/32	1 25/32	1 17/32	3 25/32	4 1/2	3 31/32
* P657	4 x 4	1/8	1 25/32	1 25/32	3 11/16	4 1/2	5 1/32
* P658	6 x 4	1 3/32	3 1/32	1 25/32	5 29/32	6 11/16	5 1/32
* P659	6 x 6	9/32	3 1/32	3 1/32	6 11/32	6 11/16	7 7/32
† P6508	8 x 8	4 9/16	4 1/32	4 1/32	12 5/8	8 29/32	9 11/32
P6510-8	10 x 8	1 7/8	4 1/4	4 1/4	10 3/8	11 1/8	9 11/32
P6510	10 x 10	1 5/32	5 3/8	5 3/8	11 29/32	11 1/8	11 17/32
P6512	12 x 12	2 3/32	6 3/8	6 3/8	14 27/32	13 9/32	13 19/32

-- DIMENSIONS AND APPEARANCE ARE APPROXIMATE AND SUBJECT TO CHANGE  
WITHOUT NOTICE DUE TO DESIGN OR PRODUCTION MODIFICATIONS  
-- MOLDED FITTING TOLERANCE = ±1/8" OVERALL LENGTH  
-- FABRICATED FITTING TOLERANCE = ±1" LINEAR, ± 2° ANGULAR

\* MOLDED FITTING  
† ASSEMBLED FROM MOLDED COMPONENTS  
ALL OTHER FITTINGS ARE FABRICATED