



TO INFORM YOU PRODUCT SUPPORT BULLETIN # 525

TO: AUTHORIZED *portable electric tool* SERVICE STATIONS
factory SERVICE CENTERS

DATE: March, 2013

TOOL(S) \ PRODUCT(S) AFFECTED: 6410, 6411, 6465, 6466 SAW MOTOR 6480 PANEL SAW

SUBJECT: **REPLACEMENT OPTION** for 'AFFECTED' product originally using 23-66-1800 or 23-66-2090 Switch

23-66-1800 and 23-66-2090 Switch is obsolete and replaced by **14-46-1852**
Service Instruction Notice –

23-66-1800, 23-66-2090 6480 Panel Saw ON-OFF Switch for 6410, 6411, 6465 & 6466 Panel Saw Motor is obsolete - no longer available; it can be replaced by one of two options...



The 23-66-1852 Switch Replacement Kit is obsolete and replaced by one of three switch kits listed below. Determine the correct switch kit needed for your tool and please re-order.

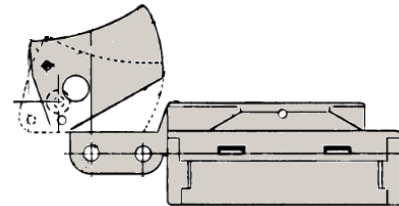
Service Kit	For '50 Series' Grinders listed below
31-44-0210	5196, 5211, 5223, 5455, 5535, 6072 and 6075

Service Kit	For '70 Series' Grinders listed below
23-66-1802	6065-6, 6066-6, 6067-6, 6068-6, 6069, 6070, 6095, 6096, 6098, 5243 and 5243-2

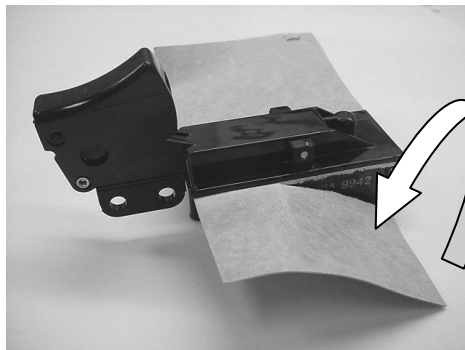
Service Instruction	8" Panel Saw Motor 6410, 6411, 6465 and 6466
	PLEASE CALL MILWAUKEE AFTER-SALES SERVICE-TECHNICAL SUPPORT 1.800.729.3878 FOR CURRENT OPTIONS

Option 1 - 23-66-1810 ON-OFF Switch *minus four (4) switch screws and/or 23-66-1815 ON-OFF Switch (including four [4] M3.5 X 0.6mm Metric Screw switch screws)* **without** Padlock – Lock-Out hole (switch lock-out feature) and **without** 'lock-on' button are identical to the 23-66-1800 or 23-66-2090 in rated amp capacity and wiring - note, these switches do not have a lock-on button feature; it will work in the Panel Saw Motor being serviced without any modification necessary expect for plugging the hole where the 'lock-on' button was – it is recommended that the existing hole in switch handle cover be plugged with RTV Silicone Sealant to prevent sawdust from entering handle switch cavity – sealant should be allow to cure overnight before replacing handle cover.

Note: 23-66-2090 switch screws are a M3.5 X 0.6mm Metric Screw.



Option 2 - 23-66-0250 ON-OFF Switch (including four [4] 5-40 X 1/4" US SAE switch screws) **without** Padlock – Lock-Out hole (switch lock-out feature) and **with** 'lock-on' button is identical to the 23-66-1800 or 23-66-2090 in rated amp capacity and wiring however, use of this switch requires trimming off the (grey) paper from the switch body – directly at the switch body, a minor modification, see photo. Note: original Metric screws from 23-66-2090 should not be used in 23-66-0250 Switch; use only the four [4] 5-40 X 1/4" US SAE switch screws supplied with the 23-66-0250 Switch



trim/cut off switch insulator
from both side of switch body

This bulletin is for informational purposes. PLEASE NOTE ON SERVICE PARTS LIST: 54-40-0170, -0171, -0172, -0180, -0181, -0182, -0250, -0251, -0260, 0261