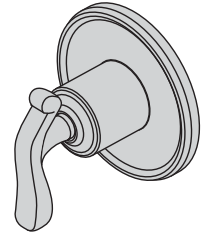



51-458-TRM, 51-460-TRM
Winslet™ Diverter Trim Series
Operation & Maintenance Manual

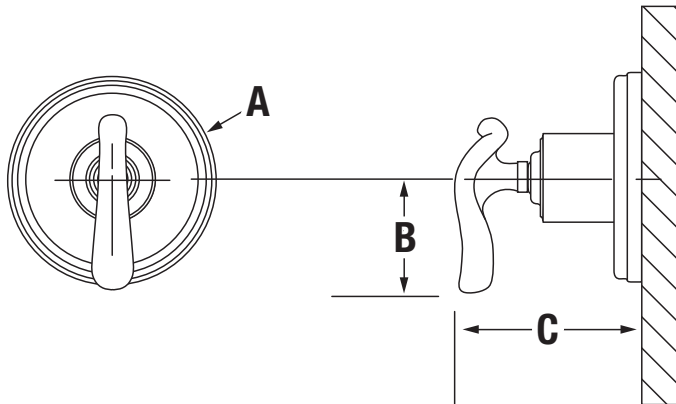


Model Numbers	Specifications
<input type="checkbox"/> 51-458-TRM <i>Winslet Dual Outlet Diverter Trim</i> <input type="checkbox"/> 51-460-TRM <i>Winslet Triple Outlet Diverter Trim</i>	Dual and triple outlet diverter trim made from metal and plastic materials plated in standard polished chrome finish.
Modifications	Compliance
<input type="checkbox"/> -ORB <i>Oil rubbed bronze finish</i> <input type="checkbox"/> -STN <i>Satin nickel finish</i>	-ASME A112.18.1/CSA B125.1  Warranty Limited Lifetime - to the original end purchaser in consumer installations. 5 Years - for commercial installations. Refer to www.symmons.com/warranty for complete warranty information.

Note: Append appropriate -suffix to model number.

Dimensions

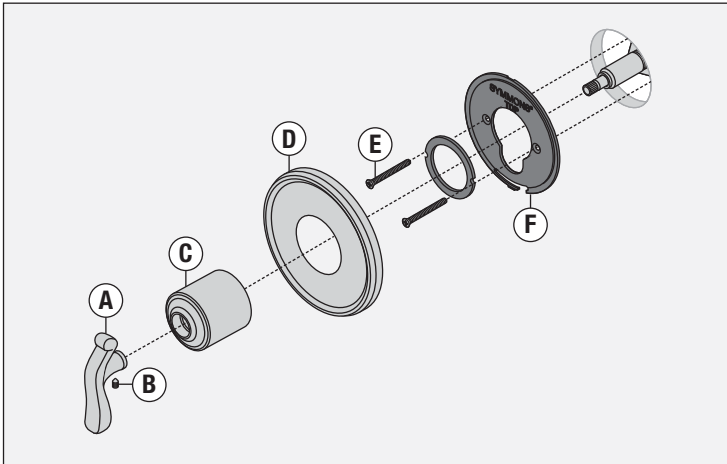
Measurements	
A	Ø 5", 127 mm
B	2 7/8", 73 mm
C	3 1/2", 89 mm



Note: Dimensions are subject to change without notice.

51-458-TRM, 51-460-TRM
Winslet™ Diverter Trim Series
Operation & Maintenance Manual

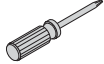

Dimensions



Replacement Parts		
Item	Description	Part Number
A B	Handle Set Screw	T-611
C	Dome Cover	T-01197-PL
D E F	Eschutcheon Screw Mounting Plate	T-607-NS-K001

Notes:

- 1) Append -STN to part number for satin nickel finish;
-ORB for oil rubbed bronze finish.

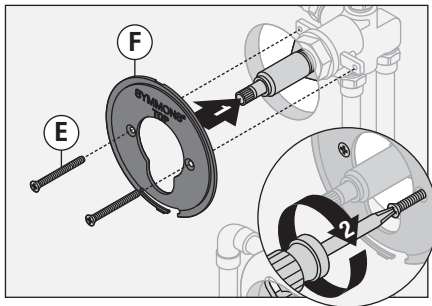
Required for Installation	
Phillips head screwdriver	
Allen wrench (3/16")	

51-458-TRM, 51-460-TRM
Winslet™ Diverter Trim Series
Operation & Maintenance Manual

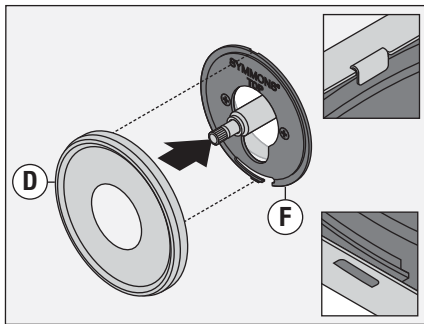
Installation

Note: For rough-in installation, please see valve body installation guide.

- 1) Install plastic mounting plate (F) to diverter valve (51-458 diverter valve = 4-458E-BODY, 51-460 diverter valve = 4-460E-BODY). Secure with two screws (E).

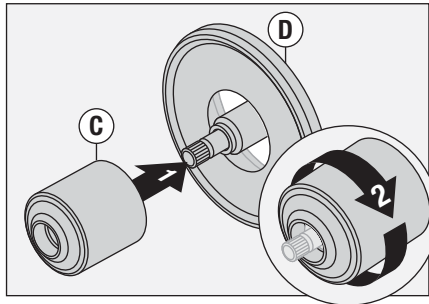


- 2) Attach diverter escutcheon (D) to plastic mounting plate (F).

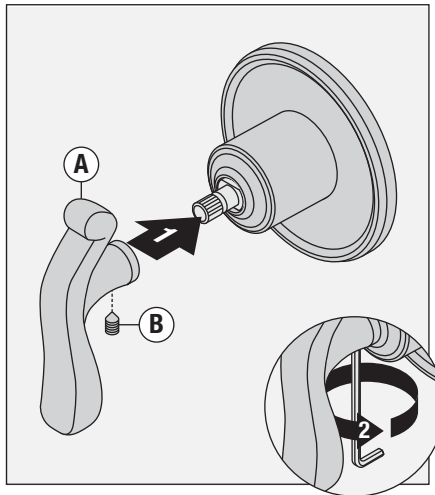


Note: Tabs should snap into place.

- 3) Install dome cover (C) to valve by turning clockwise.

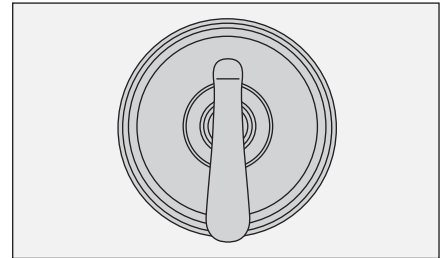


- 4) Install diverter handle (A) to valve. Secure handle by tightening Allen screw (B).

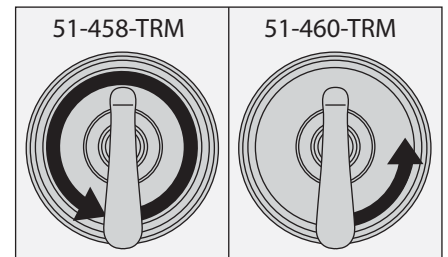


Diverter Control

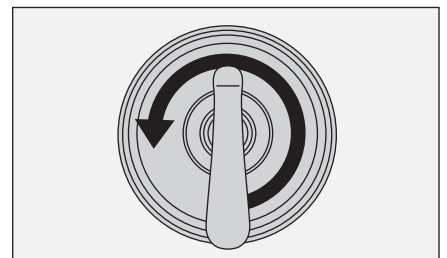
- 1) Diverter handle facing straight down is for diverter function 1.



- 2) **51-458-TRM:** Turn diverter handle counterclockwise one full turn for diverter function 2.
51-460-TRM: Turn diverter handle counterclockwise one quarter turn for diverter function 2.



- 3) **51-460-TRM:** Turn diverter handle counterclockwise 3/4 turn for diverter function 3.



Care and Cleaning

- 1) Clean finished trim area with a soft cloth using mild soap and water or a non-abrasive cleaner and then quickly rinse with water.