

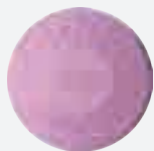
# ROTOR ACCESSORIES

## EFFLUENT WATER INDICATORS FOR 300 SERIES



### 89-7854

- Lavender cover for 300 Series Omni nozzle high-pop models
- Use with part no. 300-25 (Omni Nozzle)



### 89-7853

- Lavender cover for 300 Series Omni nozzle lawn and shrub models
- Use with part no. 300-15 (Omni Nozzle)



### 89-7889

- Lavender cap for 300 Series standard lawn and shrub models
- Use with nozzle assy (01, 02, 03, 63, 93)

## NOZZLES



### Standard T7 Nozzle Tree 102-2633

### Low Flow T7 Nozzle Tree 118-5978



### T5 Nozzle Tree Kit 102-7712

- 20 nozzle trees per bag

## INSTALLATION/ADJUSTMENT TOOLS



### Mini 8 Adjustment Tool 102-2024



### T5 Rotor Check Valve Kit 102-7714

- 20 valve seals per bag



### T5, T7 and TS90 Rotor Adjustment Tool 102-6527



### 995-51

- Pressure gauge kit



### 995-50

- Pilot tube



### 995-49

- 0-200 psi pressure gauge hermetically sealed shake resistant-free



### 995-01

- Flow gauge

## INSTALLATION/ADJUSTMENT TOOLS FOR 640 SERIES



### 995-08

- Valve removal tool
- Designed for quick removal of valve assembly from body



### 995-33

- 1/16" Allen screwdriver