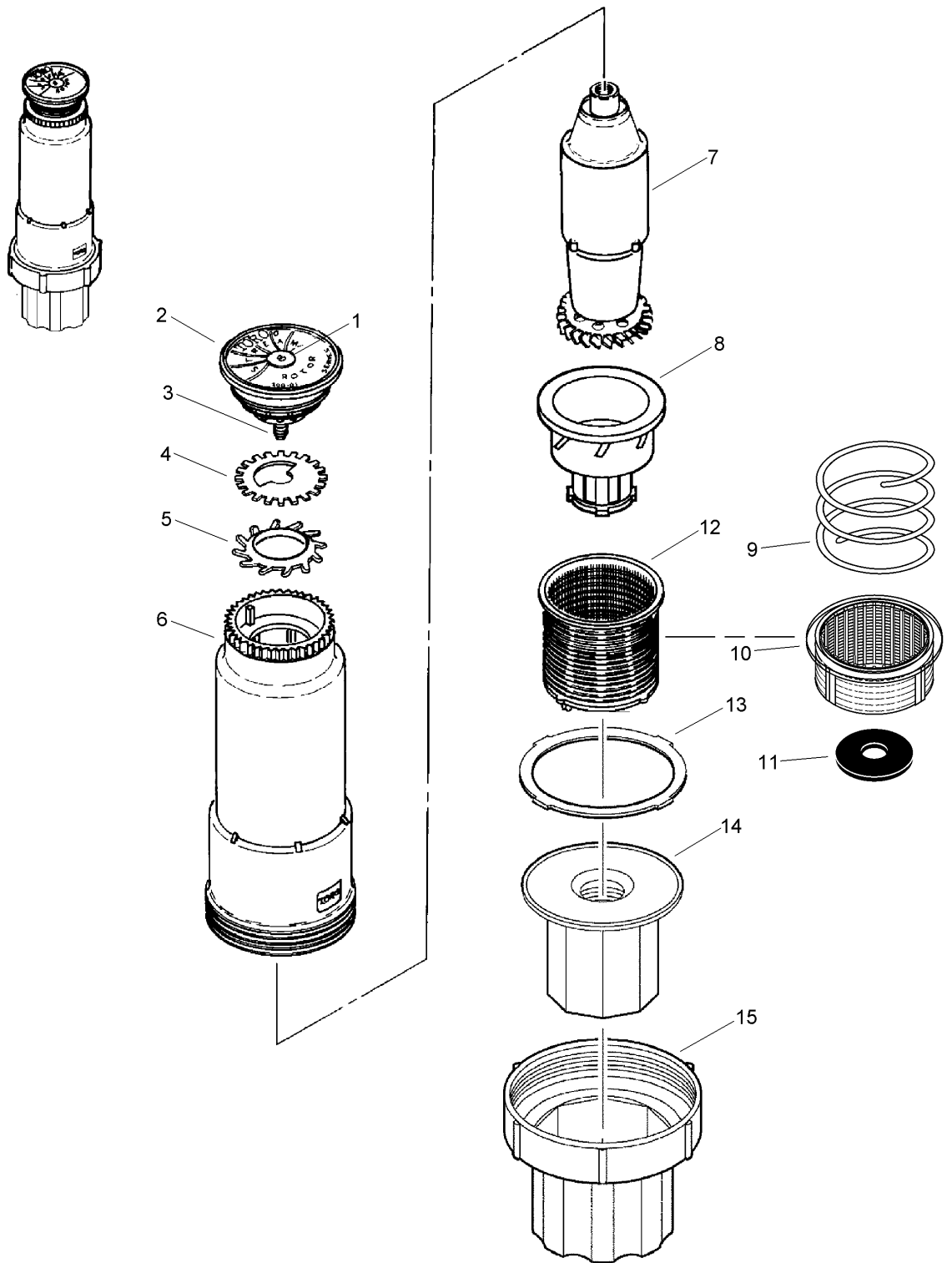


# 300 Shrub



## 300 Shrub (continued)

<i>Ref.</i>	<i>Part Number</i>	<i>Qty.</i>	<i>Description</i>	<i>Ref.</i>	<i>Part Number</i>	<i>Qty.</i>	<i>Description</i>
1		1	Plug, Cap, Nozzle ▲	8	89-6929	1	Stator Assy., Shrub
2		1	Nozzle Assy. (Includes Items 1 And 3) ▲	9	102-0579	1	Check, Spring
3	360-0272	1	Screw, Machine, Nozzle, 8-32 X 7/8"	10	102-0575	1	Screen
4		1	Disc, Arc ▲	11	89-7561	1	Seal, Check, Com
5	9-2825	1	Seal, Nozzle	12	9-5212	1	Screen, Basket
6	9-5210	1	Body, Shrub	13	9-5211	1	Seal
7	9-2829	1	Drive Assy., 300 Series	14	89-6094	1	Threaded Insert, 3/4" & 1/2"
				15	9-5699	1	Base, Shrub ▲ Insert, 3/4" ● ■

● SERVICE ITEMS  
▲ Not serviced separately

■ Not illustrated