

300 SERIES MULTI-STREAM ROTOR®

FEATURES & BENEFITS

Unique Multiple Rotating Streams

Provides slow, effective watering, and the ability to couple different arcs on the same zone, which saves time and water.

Matched Precipitation Rate Arc Discs

Ensures uniform delivery of water across each square foot of an irrigated area, resulting in high-precision water application.

Choice Of Six Nozzles and Nine Interchangeable Arc Discs

For maximum versatility covering varying landscape needs.



300 Series arc discs come in nine different selections



Effluent Options Available

PRODUCT HIGHLIGHT



A Winning Combination of Watering Efficiency and Visual Appeal

The exclusive "fingers of water" application takes a flow of water and divides it into smaller streams at different trajectories for a stronger performance all across the landscape. Shorter radii get the coverage needed with enough water still in the main stream to reach longer distances. This also creates a heavier watering stream at the tail end of the spray allowing for greater wind resistance.



SPECIFICATIONS

Operational

- Radius: 14'-33"
- Flow Rate:
 - Lawn Pop-up and High pop: 0.57-7.51 gpm
 - Shrub (COM): 2.07-6.36 gpm
- Operating Pressure Range: 35-50 psi
- Pop-up Height to Nozzle:
 - Lawn Pop-up: 2³/₄"
 - High Pop: 11³/₄"
- Inlet (Female-threaded):
 - Lawn Pop-up and High pop: ³/₄"
 - Shrub: Combined ¹/₂" to ³/₄"
- Large basket filter screen

Dimensions

- Body Diameter: 2³/₈"
- Cap Diameter: 3"
- Height:
 - Lawn Pop-up: 6¹/₈"
 - High Pop: 16"
- Shrub Base Diameter: 1³/₄"

Options Available

- Recycled Water Indicators:
- Lavender Cover, High-Pop (89-7854 - fits 300-25 Omni only)
 - Lavender Cover, Lawn & Shrub (89-7853 - fits 300-15 Omni only)
 - Lavender Cap, Standard Nozzles (89-7889 - fits 01, 02, 03, 63, 93)

Warranty

- Two years

300 SERIES: 300-15 (LAWN) AND 300-25 (HIGH POP) OMNI PERFORMANCE CHART

psi	Radius	Precipitation Rate*		gpm										
		▲	■	90°	112°	135°	157.7°	180°	202.5°	225°	270°	360°		
35	15	1.69	1.46	0.85	1.06	1.28	1.49	1.70	1.91	2.13	2.55	3.41		
35	18	1.37	1.19	1.00	1.24	1.50	1.75	2.00	2.25	2.50	3.00	4.00		
35	21	1.15	1.00	1.15	1.42	1.72	2.01	2.29	2.58	2.86	3.44	4.58		
35	24	0.99	0.86	1.29	1.60	1.94	2.26	2.58	2.91	3.23	3.88	5.17		
35	26	0.95	0.82	1.44	1.79	2.16	2.52	2.88	3.24	3.60	4.32	5.76		
50	18	1.60	1.38	1.16	1.44	1.74	2.04	2.33	2.62	2.91	3.49	4.65		
50	21	1.35	1.17	1.34	1.66	2.01	2.35	2.68	3.02	3.35	4.02	5.36		
50	24	1.17	1.02	1.52	1.88	2.28	2.66	3.04	3.42	3.80	4.56	6.08		
50	27	1.04	0.90	1.70	2.10	2.55	2.97	3.40	3.82	4.24	5.09	6.79		
50	30	0.93	0.80	1.88	2.33	2.82	3.29	3.75	4.23	4.69	5.63	7.51		

300 SERIES SHRUB (360° ARC DISC)

Nozzle	psi	300 Series gpm	Radius
01	50	2.07	14
01	75	2.95	16
02	50	2.48	23
02	75	3.69	25
03	50	4.55	27
03	75	6.24	29
63	50	2.66	28
63	75	3.82	30
93	50	3.64	29
93	75	5.29	31
Omni (Min)	50	2.67	16
Omni (Min)	75	3.95	18
Omni (Max)	50	5.08	30
Omni (Max)	75	6.36	33

300 SERIES LAWN POP-UP APEX @ 50 PSI

Nozzle	27°
	Max. Ht. of Spray
01	4' 10"
02	5' 1"
03	5' 11"
63	7' 0"
93	6' 3"

300 SERIES: FIXED RADIUS NOZZLE PERFORMANCE CHART

Nozzle	psi	Radius	Precipitation Rate*		gpm										
			▲	■	90°	112°	135°	157.7°	180°	202.5°	225°	270°	360°		
01/21	35	16	0.99	0.86	0.57	0.71	0.86	1.00	1.14	1.28	1.43	1.71	2.28		
	50	18	0.99	0.86	0.72	0.90	1.08	1.26	1.44	1.62	1.80	2.16	2.88		
02/22	35	21	0.73	0.63	0.72	0.90	1.08	1.26	1.44	1.62	1.80	2.16	2.88		
	50	24	0.66	0.57	0.85	1.06	1.28	1.49	1.71	1.92	2.13	2.56	3.41		
03/23	35	28	0.77	0.67	1.36	1.69	2.04	2.38	2.72	3.05	3.39	4.07	5.43		
	50	30	0.80	0.69	1.61	2.01	2.42	2.82	3.23	3.63	4.03	4.84	6.45		
63*	35	28	0.39	0.33	0.68	0.85	1.02	1.19	1.36	1.53	1.70	2.04	2.72		
	50	30	0.40	0.35	0.81	1.00	1.21	1.41	1.62	1.82	2.02	2.42	3.23		
93*	35	28	0.58	0.50	1.02	1.27	1.53	1.78	2.04	2.29	2.54	3.05	4.07		
	50	30	0.60	0.52	1.21	1.51	1.82	2.12	2.42	2.72	3.03	3.63	4.84		

*▲ Precipitation rates are for triangular spacing, shown in inches per hour, calculated at 50% of diameter.
 ■ Precipitation rates are for square spacing, shown in inches per hour, calculated at 50% of diameter.
 All performance specifications are based on the stated working pressure available at the base of the sprinkler.
 * Low gallonage. Radius shown in feet. Data based on 360°.

300 SERIES MULTI-STREAM ROTOR MODEL LIST

Model	Description
300-00-00	Lawn Pop-up without Nozzle
300-10-00	Shrub without Nozzle
300-12-00	12" High Pop without Nozzle

Specifying Information—300 Series Multi-Stream Rotor

3XX-XX-XX-E			
Arc	Body	Nozzle	Optional
3XX	XX	XX	E
04—90° 05—112° 06—135° 07—157.5° 08—180° 09—202.5° 10—225° 12—270° 16—360°	00—Lawn Pop-up 10—Shrub 12—High Pop	01/21—Small Radius, 12 Ports 02/22—Medium Radius, 12 Ports 03/23—Large Radius, 12 Ports 15—Adjustable Shrub & Lawn Pop-up 25—Adjustable, High Pop-up 63—Large Radius, 6 Ports, Low gpm* 93—Large Radius, 9 Ports, Low gpm*	E—Effluent

Example: A 300 Series Shrub Sprinkler with a 90° arc and an adjustable nozzle, would be specified as: **304-10-15**

* Available on Lawn Pop-up and Shrub only.

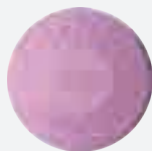
ROTOR ACCESSORIES

EFFLUENT WATER INDICATORS FOR 300 SERIES



89-7854

- Lavender cover for 300 Series Omni nozzle high-pop models
- Use with part no. 300-25 (Omni Nozzle)



89-7853

- Lavender cover for 300 Series Omni nozzle lawn and shrub models
- Use with part no. 300-15 (Omni Nozzle)



89-7889

- Lavender cap for 300 Series standard lawn and shrub models
- Use with nozzle assy (01, 02, 03, 63, 93)

NOZZLES



Standard T7 Nozzle Tree 102-2633

Low Flow T7 Nozzle Tree 118-5978



T5 Nozzle Tree Kit 102-7712

- 20 nozzle trees per bag

INSTALLATION/ADJUSTMENT TOOLS



Mini 8 Adjustment Tool 102-2024



T5 Rotor Check Valve Kit 102-7714

- 20 valve seals per bag



T5, T7 and TS90 Rotor Adjustment Tool 102-6527



995-51 • Pressure gauge kit



995-50 • Pilot tube



995-49 • 0-200 psi pressure gauge hermetically sealed shake resistant-free



995-01 • Flow gauge

INSTALLATION/ADJUSTMENT TOOLS FOR 640 SERIES



995-08

- Valve removal tool
- Designed for quick removal of valve assembly from body



995-33

- 1/16" Allen screwdriver