



**BRADFORD WHITE**<sup>®</sup>  
W A T E R H E A T E R S

**REPLACEMENT PARTS LIST**  
**ECOSTOR™ SERIES**  
**SOLAR INDIRECT SYSTEM**



EcoStor™ SC Indirect  
Single Coil  
Electric Backup

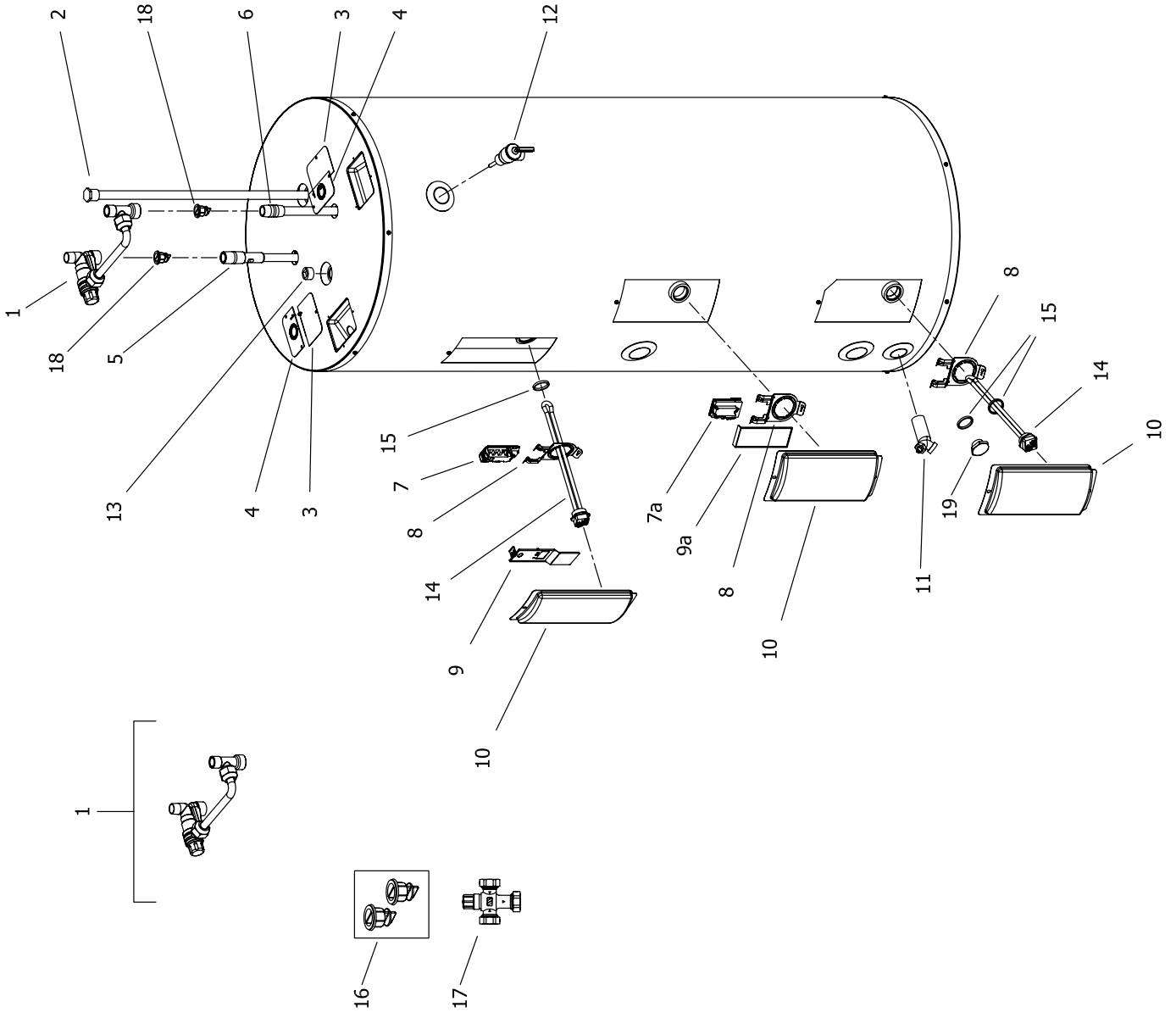


EcoStor™ SD Indirect  
Dual Coil  
Heat Exchanger Backup

***Effective: October 1, 2008***  
***ECO 7339***

**NOTE: BOTH MODEL AND SERIAL  
NUMBERS ARE REQUIRED FOR  
ORDERING REPLACEMENT PARTS**

Dimensions and specifications  
subject to change without notice.



Item	Description	Model	Model	Model	Model	Model	Model	Model	Model
		S(SW,DW)260R*(D,S)S	S(SW,DW)275R*(D,S)S	S(SW,DW)215R*(D,S)S	SDCDW255R*SW	SDCDW270R*SW	SDCDW2110R*SW		
1	Kit Integrated Mixing Device (The Optimizer)	239-46225-02	239-46225-02	239-46225-02	239-46225-02	239-46225-02	239-46225-02		
2	Anode-Hex Plug type (Aluminum)	224-38508-07	224-38508-07	224-38508-07	224-38508-07	224-38508-07	224-38508-07		
3	Cover Junction Box	243-39452-00	243-39452-00	243-39452-00	243-39452-00	243-39452-00	243-39452-00		
4	Cover Conduit/Ground	243-39451-00	243-39451-00	243-39451-00	243-39451-00	243-39451-00	243-39451-00		
5	Hot Water Outlet Anode (Aluminum)	224-32999-07	224-32999-07	224-32999-13	224-32999-07	224-32999-07	224-32999-13		
6	Cold Water Inlet Dip Tube (Polysulfone)	229-39628-10	229-39628-10	229-39628-16	229-39628-10	229-39628-10	229-39628-16		
7	Thermostat with High Limit ▲	265-46281-00	265-46281-00	265-46281-00	265-46281-00	265-46281-00	265-46281-00		
7a	Thermostat (Dual Element Only) ▲	265-46279-00	265-46279-00	265-46279-00	---	---	---		
8	Thermostat Mounting Bracket	239-44479-00	239-44479-00	239-44479-00	239-44479-00	239-44479-00	239-44479-00		
9	Thermostat Protector (Large) ◆	223-40399-00	223-40399-00	223-40399-00	223-40399-00	223-40399-00	223-40399-00		
9a	Thermostat Protector (Small)◆◆	223-46286-00	223-46286-00	223-46286-00	---	---	---		
10	Access Cover	243-36618-02	243-36618-02	243-36618-02	243-36618-02	243-36618-02	243-36618-02		
11	Brass Drain Valve	265-42351-02	265-42351-02	265-42351-02	265-42351-02	265-42351-02	265-42351-02		
12	T&P Relief Valve	230-40594-02	230-40594-02	230-40594-02	230-40594-02	230-40594-02	230-40594-02		
13	3/4 NPT Plug	239-11638-00	239-11638-00	---	---	---	---		
14	Heating Element Incoloy 240V/4500W	220-42545-16	220-42545-16	220-42545-16	---	---	---		
	Heating Element Incoloy 240V/5500W	220-42545-17	220-42545-17	220-42545-17	---	---	---		
15	Element Gasket	223-34019-00	223-34019-00	223-34019-00	223-34019-00	223-34019-00	223-34019-00		
16	Kit-Heat Trap Insert	265-45420-00	265-45420-00	265-45420-00	265-45420-00	265-45420-00	265-45420-00		
17	ASSE Approved Mixing Device (Optional)	239-43740-01	239-43740-01	239-43740-01	239-43740-01	239-43740-01	239-43740-01		
18	Heat Trap Insert (Inlet & Outlet)	239-45167-00	239-45167-00	239-45167-00	239-45167-00	239-45167-00	239-45167-00		
19	Element Plug (Single Element Only)	223-34020-00	223-34020-00	223-34020-00	---	---	---		

\* All Warranties

◆ For use with item 7.

◆◆ For use with item 7a.

▲ Thermostat protector provided with thermostat.



# **BRADFORD WHITE®**

W A T E R H E A T E R S

Ambler, PA

For U.S. and Canada field service,  
contact your professional installer or  
local Bradford White sales representative.

**Sales/800-523-2931**  
**Fax/215-641-1670**  
**Parts Fax/215-641-2180**

**Technical Support/800-334-3393**  
**Fax/269-795-1089**

**Warranty/800-531-2111**  
**Fax/269-795-1089**

**International:**  
**Telephone/215-641-9400**  
**Telefax/215-641-9750**



# **BRADFORD WHITE-CANADA® INC.**

Mississauga, ON

**Sales/866-690-0961**  
**905-238-0100**

**Fax/905-238-0105**

**Technical Support/800-334-3393**

**Email**

**parts@bradfordwhite.com**  
**techserv@bradfordwhite.com**

**www.bradfordwhite.com**