

electric tankless hot water heater

Twelve SERIES

Twelve Module, Commercial/Industrial for Emergency Eye/Face and Drench Showers

EEMAX SERIES TWELVE MODELS

- Recommended for emergency drench showers to comply with ANSI Z358.1 tepid water requirements (65°-90°) 25 GPM.
- Equipped with microprocessing thermostat accuracy +/- 1°F.
- Electrical options available are 480V Delta or 208V Delta (both 3-Phase) no neutral leg required.
- Built-in over temp protection.



EX MODEL	VOLTS	KW	AMPS	TURN-ON (GPM)
EX480T12 EFD	208v/3 Ø	48	133A/phase	3 & 15
EX480T12 DS	208v/3 Ø	48	133A/phase	12
EX720T12 EFD	208v/3 Ø	72	200A/phase	3 & 15
EX720T12 DS	208v/3 Ø	72	200A/phase	12
EX960T12 EFD	208v/3 Ø	96	267A/phase	3 & 15
EX960T12 DS	208v/3 Ø	96	267A/phase	12

ED MODEL	VOLTS	KW	AMPS	TURN-ON (GPM)
ED079480T12 EFD	480v Delta	79	96A/phase	3 & 15
ED096480T12 EFD	480v Delta	96	116A/phase	3 & 15
ED108480T12 EFD	480v Delta	108	130A/phase	3 & 15
ED126480T12 EFD	480v Delta	126	152A/phase	3 & 15
ED138480T12 EFD*	480v Delta	138	166A/phase	3 & 15
ED150480T12 DS*	480v Delta	150	180A/phase	12

*Available July 2011

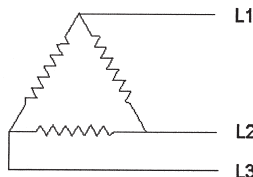


ELECTRICAL CONFIGURATIONS AND REQUIREMENTS:

All Eemax three phase units are custom made to order and as such, are non-returnable and non-refundable. We urge you, therefore, to check your electrical supply, making sure all criteria for operating your Eemax water heater are met.

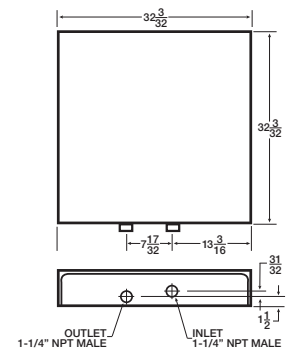
EEMAX 480v and 208v Three Phase Units Delta Configuration
Requires: 3 Lives and 1 Ground (earth)

Three Phase Delta Three-wire



PRODUCT SPECIFICATIONS:

- Dimensions: 32³/₃₂" H x 32³/₃₂" W x 6" D
- Weight: 70 lbs.
- Cover: Powder Coated Steel
- Color: Yellow
- Element: Twelve replaceable cartridge elements plus two spares
- Fittings: 1.25" NPT fittings at BOTTOM of unit
- Pressure: Min. 40psi, Max. 150psi
- UL Listed: E86887(m)
- U.S. PATENT #4,960,976, #4,762,980



QUALITY FEATURES

- **Cut Energy Waste** – Flow switch activates heater only on demand (no standby heat loss) – 99% efficient.
- **Save Water** – Install at specific location.
- **Continuous Hot Water** – No storage capacity to run out.
- **Unlimited On Demand Hot Water** – No delay.
- **Meets ANSI Z358.1 Tepid Water Requirements.**
- **Reduced Installation Material Cost** – No T&P relief needed (check local codes).
- **Microprocessor Control** – Ensures accurate output temperatures, standard temp of 90° F.
- **Capacity to 26 GPM** (except 138 and 150 kW units at 30 GPM).
- **Reduces Calcification, Liming and Sedimentation.**
- **Field Serviceable Element** – Replaceable cartridge element (1 year warranty).
- **Warranty** – Heaters are guaranteed against failure due to leaks of "Heater Body/Element Assembly" for a period of FIVE YEARS and ONE YEAR on parts.

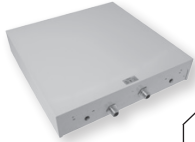


353 Christian Street, Oxford, CT 06478
(800) 543-6163 info@eemaxinc.com
eemax.com



* The wetted surface of this product contacted by water contains less than 0.25% lead and meets California and Vermont Lead Free laws.

SERIES
Twelve



	VOLTAGE	POWER (kW)	AMPS	RECOMMENDED WIRE SIZE	TURN-ON (GPM)	PHASE	NPT FITTING	# HEATING MODULES	TEMPERATURE RISE IN GPM (F)							
									3.0	4.0	6.0	7.5	20.0	23.0	26.0	30.0

TWELVE MODULE, THREE PHASE MODELS – 208v DELTA

EX480T12 EFD	208v/3 Ø	48	133A/phase	2/0 AWG	3 & 15	Three	1.25"	12	54°	40°	27°	21°	16°	14°	12°	–
EX480T12 DS	208v/3 Ø	48	133A/phase	2/0 AWG	12	Three	1.25"	12	–	–	–	–	16°	14°	12°	–
EX720T12 EFD	208v/3 Ø	72	200A/phase	300 MCM	3 & 15	Three	1.25"	12	80°	61°	40°	32°	24°	21°	18°	–
EX720T12 DS	208v/3 Ø	72	200A/phase	300 MCM	12	Three	1.25"	12	–	–	–	–	24°	21°	18°	–
EX960T12 EFD	208v/3 Ø	96	267A/phase	400 MCM	3 & 15	Three	1.25"	12	108°	81°	54°	43°	32°	28°	25°	–
EX960T12 DS	208v/3 Ø	96	267A/phase	400 MCM	12	Three	1.25"	12	–	–	–	–	32°	28°	25°	–

TWELVE MODULE, THREE PHASE MODELS – 480v DELTA

ED079480T12 EFD	480v Delta	79	96A/phase	1/0 AWG	3 & 15	Three	1.25"	12	88°	67°	44°	35°	26°	23°	20°	–
ED096480T12 EFD	480v Delta	96	116A/phase	2/0 AWG	3 & 15	Three	1.25"	12	108°	81°	54°	43°	32°	28°	25°	–
ED108480T12 EFD	480v Delta	108	130A/phase	3/0 AWG	3 & 15	Three	1.25"	12	122°	92°	61°	49°	36°	32°	28°	–
ED126480T12 EFD	480v Delta	126	152A/phase	4/0 AWG	3 & 15	Three	1.25"	12	142°	107°	71°	57°	43°	37°	33°	–
ED138480T12 EFD*	480v Delta	138	166A/phase	250 MCM	3 & 15	Three	1.25"	12	156°	117°	78°	62°	47°	40°	36°	32°
ED150480T12 DS*	480v Delta	150	180A/phase	250 MCM	12	Three	1.25"	12	–	–	–	–	51°	45°	39°	34°

*Available July 2011

SUGGESTED SPECIFICATION

Tankless Water Heater shall be an Eemax,

_____ with _____ kW, _____ vac, and _____ to heat _____ GPM @ a
 MODEL # KW RATING VOLTAGE AMPERAGE
 temperature rise of _____ degrees F.

Element shall be replaceable cartridge insert. Element shall be iron free, Nickel Chrome material. Heater shall be fitted with 1.25" NPT. Heater shall be installed upright with water connections on bottom. Hot water storage tanks prohibited. Unit shall be Eemax or approved equal.

NOTE: Refer to rating chart for product information.

NEMA OPTIONS & ACCESSORIES

NEMA 4 = Optional waterproof cabinet – hinged cover. Powder coated finish.

NEMA 4x = Optional stainless steel waterproof corrosion-resistant cabinet.

Freeze Protection Kit = Optional add-on for NEMA 4 and NEMA 4x. Ideal for harsh cold environments.

GFCI Breaker = Optional 200A ground fault protection.

Siren/Beacon = Optional safety alerting light w/101dB siren.

EEMAX SUBMITTAL

Engineer/Architect: _____
 Job Name/Customer: _____
 Location: _____
 Contractor: _____
 Representative: _____

HEATER SPECIFICATIONS:	Quantity	kW	Voltage	AMPS	GPM
Series Twelve Model # _____	_____	_____	_____	_____	_____

SUFFIX DEFINITION

EFD = For combination Eye/Face drench shower
 First Stage 3 GPM turn on (with reduced power for eye/face wash)

Second Stage 15 GPM turn on (full power for drench shower)

DS = For drench shower only.
 (min. turn on 12 GPM)

SPECIAL DESIGN SERVICE

INQUIRIES FOR UNITS FOR UNIQUE APPLICATIONS ARE WELCOME.
 CALL OUR TECHNICAL SERVICE DEPT. **1-800-543-6163**.



353 Christian Street, Oxford, CT 06478
 (800) 543-6163 info@eemaxinc.com
eemax.com



* The wetted surface of this product contacted by water contains less than 0.25% lead and meets California and Vermont Lead Free laws.

© 2011 Eemax, Inc. All Rights Reserved EX09001-26 Rev. A