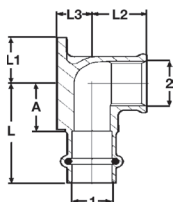


Viega ProPress 1/2" to 2"

Dimensional documentation (inches)

Bronze Elbow Drop 90° P x FPT with Wall Plate Model 2925.5ZL

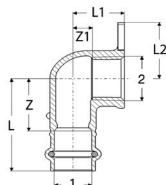


Part No	Size	L (in)	L1 (in)	L2 (in)	L3 (in)	A (in)
	1 2					
79185	1/2" x 3/8" FPT	1.77	0.74	0.83	0.67	0.94
79190	1/2" x 1/2" FPT	1.77	0.74	1.10	0.67	0.94
79195	3/4" x 3/4" FPT	1.97	0.83	1.12	0.83	1.06

Bronze Elbow Drop 90° P x FPT with Wall Plate Model 2925.5

Part No	Size	L (in)	L1 (in)	L2 (in)	L3 (in)	A (in)
	1 2					
22223	1/2" x 3/8" FPT	1.77	0.84	0.73	0.52	1.02
77697	1/2" x 1/2" FPT	1.73	0.84	0.87	0.52	0.98
77702	3/4" x 3/4" FPT	2.05	1.18	1.12	0.84	1.14
72481	1" x 1" FPT	2.36	0.98	1.26	0.87	1.46

Bronze Hi Ear 90° P x FPT - Model 2925.2ZL

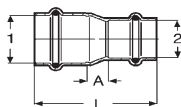


Part No	Size	Z (in)	Z1 (in)	L (in)	L1 (in)	L2 (in)
	1 2					
79205	1/2" x 1/2" FPT	0.95	0.57	1.77	1.10	1.07

Bronze Hi Ear 90° P x FPT - Model 2925.2

Part No	Size	Z (in)	Z1 (in)	L (in)	L1 (in)	L2 (in)
	1 2					
77572	1/2" x 1/2" FPT	0.98	0.33	1.73	0.87	1.05

Copper Reducer P x P - Model 2915.2



Part No	Size	A (in)	L (in)
	1 2		
78147	3/4" x 1/2"	0.42	2.07
15603	1" x 1/2"	0.71	2.36
78152	1" x 3/4"	0.48	2.29
15593	1 1/4" x 3/4"	0.70	2.64
78157	1 1/4" x 1"	0.55	2.48
18473	1 1/2" x 3/4"	0.98	3.33
15588	1 1/2" x 1"	0.74	3.07
78162	1 1/2" x 1 1/4"	0.50	2.96
18468	2" x 3/4"	1.54	4.02
15608	2" x 1"	1.29	3.78
22328	2" x 1 1/4"	0.81	3.43
78167	2" x 1 1/2"	0.74	3.75