

# Tape Loc® Fittings

## Features & Benefits

### Tape Lock Provision

Special Cap provided to lock the thin wall thickness tube



### Additional Front Barb

Additional front start barb provided to hold the tube



## Additional Features

- Manufactured from tough engineering plastic.
- Non corrosive & resistant to chemicals.
- UV resistant fittings.

## Applications

Used to connect thin wall thickness tubes as per following specifications

Model	Inner Diameter		Wall thickness	
	mm	inch	mil	mm
12 ID	11.8	0.47	6 to 25	0.15 to 0.64
16 ID or 06	15.9	5/8"	6 to 25	0.15 to 0.64
17 ID	16.1	0.63	6 to 25	0.15 to 0.64
8	19	3/4"	6 to 25	0.15 to 0.64
22 ID or 09	22.2	7/8"	6 to 25	0.15 to 0.64
10	25.4	1"	6 to 25	0.15 to 0.64
11	28.6	1 1/8"	6 to 25	0.15 to 0.64
14	34.9	1 3/8"	6 to 25	0.15 to 0.64

## Tape Loc® Joiner



Model	Code	Bag	Box		
		Qty. (nos.)	Qty. (nos.)	Wt. (kg)	Code
12 ID	CJ12	100	2200	20.0	B
16 ID	CJ16	100	1000	19.5	B
22 ID	CJ22	50	400	17.0	B
CPT-06-LS	12030022	50	750	13.2	A
CPT-06-LSO	12030062	50	750	13.2	A
CPT-09-LS	12030024	50	300	12.4	A
CPT-09-LSO	12030032	50	300	12.4	A
CPT-10-LS	12030171	25	250	13.6	A
CPT-11-LS	12030135	25	250	17.0	A
CPT-14-LS	12030025	25	100	14.5	A

## Tape Loc® Tee



Model	Code	Bag	Box		
		Qty. (nos.)	Qty. (nos.)	Wt. (kg)	Code
12 ID	DLT12	50	1400	20.0	B
16 ID	DLT16	50	700	20.5	B
22 ID	DLT22	50	250	16.0	B
TEE-06-LS	12030092	50	350	10.5	A

## Tape Loc® X 3/4" FH Swivel Tee



Model	Code	Bag	Box		
		Qty. (nos.)	Qty. (nos.)	Wt. (kg)	Code
LST-06-LS-WS	12030072	50	250	11.0	A
LST-06-LS-WW	12030073	50	250	11.0	A

## Tape Loc® X Hose Thread Cap



Model	Code	Bag	Box		
		Qty. (nos.)	Qty. (nos.)	Wt. (kg)	Code
END-06-LSC	12030053	50	700	14.9	A
END-09-LSC	12030054	50	400	13.0	A
END-11-LSC	12030138	50	250	12.7	A

# Tape Loc® Fittings

## Tape Loc® X Socket / Spigot



Model	Code	Bag	Box		
		Qty. (nos.)	Qty. (nos.)	Wt. (kg)	Code
SSP-06-LS	12030085	50	800	15.5	A
SSP-09-LS	12030087	50	400	13.9	A
SSP-09-LS1	12030088	50	400	15.2	A
SSP-09-LS2	12030089	50	300	10.0	A
SSP-11-LS1	12030136	25	250	9.8	A
SSP-14-LS2	12030090	25	100	9.0	A

## Tape Loc® X Compression



Model	Code	Bag	Box		
		Qty. (nos.)	Qty. (nos.)	Wt. (kg)	Code
CSP-06-LS350	12030029	50	750	16.5	A
CSP-06-LS400	12030030	50	750	16.5	A
CSP-06-LS600	12030033	50	750	16.5	A
CSP-06-LS700	12030035	50	750	16.5	A
CSP-06-LS710	12030036	50	750	16.5	A
CSP-09-LS600	12030041	50	400	15.0	A
CSP-09-LS710	12030043	50	400	15.0	A
CSP-09-LS1-900	12030047	25	300	19.2	A
CSP-11-LS1-900	12030147	25	200	12.0	A

## Tape Loc® X 3/4" Swivel Adaptor



Model	Code	Bag	Box		
		Qty. (nos.)	Qty. (nos.)	Wt. (kg)	Code
16 ID with screen	FHS06LSWS	100	800	16.2	B
16 ID with washer	FHS06LSWW	100	800	16.2	B
FHS-06-LS-WW	12030071	50	500	11.0	A
FHS-09-LS-WW	12030151	25	500	11.0	A
FHS-06-LS-WS	12030070	50	500	11.0	A
FPS-06-LS-WW	12030134	50	500	11.0	A
FPS-09-LS-WW	12030133	25	500	11.0	A

## Tape Loc® X Lay Flat Connector



Model	Code	Bag	Box		
		Qty. (nos.)	Qty. (nos.)	Wt. (kg)	Code
FHC-09-LS	12030065	50	350	15.4	A
FHC-09-LSO	12030031	50	350	15.4	A
22 ID	DLTOLF22	50	350	18.0	B

## Tape Loc® X Two Step Lay Flat Connector



Model	Code	Bag	Box		
		Qty. (nos.)	Qty. (nos.)	Wt. (kg)	Code
FHC-1-06-LS	12030066	50	500	14.7	A

## Tape Loc® X Lay Flat Plug



Model	Code	Bag	Box		
		Qty. (nos.)	Qty. (nos.)	Wt. (kg)	Code
FHC-06-PLUG	12030064	50	500	12.4	A

# Tape Loc® Fittings

## Tape Loc® X Lay Flat Connector (Small Foot)



Model	Code	Bag	Box		
		Qty. (nos.)	Qty. (nos.)	Wt. (kg)	Code
FHC-06-LS	12030063	50	550	14.5	A
FHC-06-LSO	12030067	50	550	14.5	A
16 ID	DLTOLF16	50	600	18.0	B

## Tape Loc® X 3/4" MHT Adaptor



Model	Code	Bag	Box		
		Qty. (nos.)	Qty. (nos.)	Wt. (kg)	Code
MHT-06-LS	12030081	50	900	13.0	A
MHT-09-LS	12030082	50	450	11.5	A

## Tape Loc® X MPT Adaptor (BSP Compatible)



Model	Code	Bag	Box		
		Qty. (nos.)	Qty. (nos.)	Wt. (kg)	Code
MA-06-LS	12030076	50	1000	13.0	A
MA-06-LS1	12030017	50	900	13.0	A
MA-09-LS	12030077	50	450	11.5	A

## Tape Loc® X Adjustable Slip Fitting



Model	Code	Bag	Box		
		Qty. (nos.)	Qty. (nos.)	Wt. (kg)	Code
BASF-09-LS	12030040	25	400	12.6	A
BASF-11-LS	12030137	25	200	11.5	A

## Tape Loc® X Threaded Auto Flush Valve (Low Flow Close)



Model	Code	Bag	Box		
		Qty. (nos.)	Qty. (nos.)	Wt. (kg)	Code
FCH-06-LS-L	12030058	50	500	12.8	A
FCH-09-LS-L	12030060	50	350	13.3	A

## Tape Loc® X 0.520 I.D. Insert Coupler



Model	Code	Bag	Box		
		Qty. (nos.)	Qty. (nos.)	Wt. (kg)	Code
520I-06-LS	12030112	50	1000	13.1	A

## Tape Loc® X Barb



Model	Code	Bag	Box		
		Qty. (nos.)	Qty. (nos.)	Wt. (kg)	Code
250B-06-LS	12030004	50	1000	11.2	A
400B-06-LS	12030008	50	1000	12.0	A
400B-06-LSO	12030002	50	1000	12.0	A
700B-06-LS	12030014	50	1000	13.1	A
700B-09-LS	12030015	50	500	11.8	A

## Tape Loc® x Poly Hose Connector



Size hose x tape (mm x mm)	Code	Bag	Box		
		Qty. (nos.)	Qty. (nos.)	Wt. (kg)	Code
13 x 16 ID	CPJ1316	50	1300	15.7	B
08 x 16 ID	CPJ0816	50	1500	17.3	B
04 x 16 ID	CPJ0416	50	1600	16.3	B
12 x 12 ID	CPJ1212	50	3000	17.0	B
20 x 22 ID	CPJ2220	50	700	21.9	B

# Tape Loc® Fittings

## Tape Loc® Threaded Adaptor



Size Tube x Thread mm x inch (BSPT)	Code	Bag	Box		
		Qty. (nos.)	Qty. (nos.)	Wt. (kg)	Code
12 ID x 1/2"	CTA1212	50	2400	20.2	B
12 ID x 3/4"	CTA1234	50	2200	20.5	B
16 ID x 1/2"	CTA1612	50	1000	13.4	B
16 ID x 3/4"	CTA1634	50	1000	13.9	B
22 ID x 1/2"	CTA2212	50	750	17.0	B
22 ID x 3/4"	CTA2234	50	650	17.0	B

## Tape Loc® End Plug



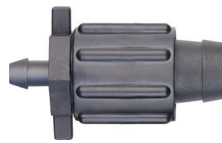
Size (mm)	Code	Bag	Box		
		Qty. (nos.)	Qty. (nos.)	Wt. (kg)	Code
12 ID	DLEP12	100	4500	24.0	B
16 ID	DLEP16	100	2000	21.9	B
22 ID	DLEP22	50	900	20.0	B

## Tape Loc® Elbow



Size (mm)	Code	Bag	Box		
		Qty. (nos.)	Qty. (nos.)	Wt. (kg)	Code
12 ID	CE12	100	2000	19.5	B
16 ID	CE16	100	1000	19.4	B
22 ID	CE 22	50	400	17.0	B
EIL-06-LS	12030049	50	500	11.2	A
EIL-09-LS	12030146	50	300	11.2	A

## Tape Loc® x Poly Take Off



Size (mm)	Code	Bag	Box		
		Qty. (nos.)	Qty. (nos.)	Wt. (kg)	Code
16 x 08 ID	DLTOP1608	50	1500	16.8	B
16 x 13 ID	DLTOP1613	50	1200	13.3	B

## Tape Loc® Valves



Size	Code	Bag	Box		
		Qty. (nos.)	Qty. (nos.)	Wt. (kg)	Code
16 mm x PE Tube	DLVP16	50	500	16.0	B
22 mm x PE Tube	DLVP22	50	350	16.0	B
16 mm x Layflat Hose	DLVLF16	50	350	16.0	B
22 mm x Layflat Hose	DLVLF22	50	350	16.0	B
16 mm x 1/2" MBSPT	DLV1612	50	500	16.0	B
16 mm x 3/4" MBSPT	DLV1634	50	500	16.0	B
22 mm x 3/4" MBSPT	DLV2234	50	350	16.0	B

## Tape Loc® Flush Valve



Size (mm)	Code	Bag	Box		
		Qty. (nos.)	Qty. (nos.)	Wt. (kg)	Code
12 ID	JLDCJ12	100	1000	20.0	B
16 ID	JLDCJ16	100	800	19.4	B
22 ID	JLDCJ22	50	450	18.0	B