

# Iron Grip



## Iron Grip Bypass Mechanical Plug Features:

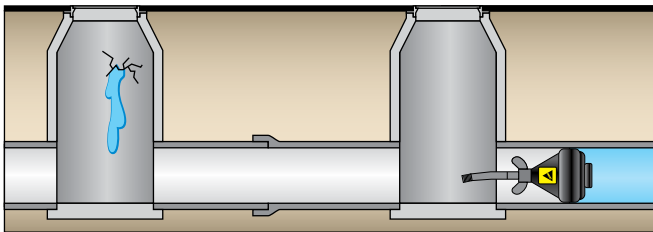
- Easy, tool-free installation
- For permanent or temporary use
- For use in water and air sewer testing
- Cast-iron design

## Equipped with:

- Large installation wing-nut
- Natural rubber o-ring



## Blocking Flow



## Iron Grip

Part Number	Nominal Size	Usage Range	Maximum Back Pressure	Length	Product Weight	Bypass Diameter (NPT)	
268028	2" (50 mm)	1.94"-2.12" (49-54 mm)	13 psi (0,9 bar)	30 ft. (9,1 M)	9.75" (248 mm)	1.1 lbs (.5 kg)	3/8" M
268038	3" (75 mm)	2.82"-3.12" (75-80 mm)	11 psi (0,76 bar)	25 ft. (7,6 M)	12.75" (324 mm)	2.3 lbs (1.1 kg)	1/2" M
268048	4" (100 mm)	3.6"-4.06" (92-103 mm)	8.7 psi (0,61 bar)	20 ft. (6,1 M)	12.75" (324 mm)	3.1 lbs (1.4 kg)	1/2" M
268068	6" (150 mm)	5.57"-6.12" (142-155 mm)	4.3 psi (0,30 bar)	10 ft. (3 M)	12.75" (324 mm)	5.6 lbs (2.5 kg)	1/2" M
268088	8" (200 mm)	7.72"-8.2" (196-208 mm)	4.3 psi (0,30 bar)	10 ft. (3 M)	17" (432 mm)	11.5 lbs (5.9 kg)	1/2" M
268108	10" (250 mm)	9.8"-10.2" (249-260 mm)	3.5 psi (0,24 bar)	8 ft. (2,4 M)	17" (432 mm)	20 lbs (9.0 kg)	1/2" M
268128	12" (300 mm)	11.56"-12.2" (294-310 mm)	2.6 psi (0,18 bar)	6 ft. (1,8 M)	19.5" (500 mm)	28 lbs (12.8 kg)	1" M

Always block plugs when conducting air tests.