

# Makita®

## 18V LXT® LITHIUM-ION CORDLESS 1/2" DRIVER-DRILL

### 480 IN.LBS. OF MAX TORQUE IN A COMPACT DESIGN

- Variable 2-Speed (0 - 400 / 0 - 1,500 RPM) Covers a Wide Range of Drilling and Driving Applications
- New Redesigned Rubberized Soft Grip Provides Increased Comfort on the Job
- Built-in L.E.D. Light Illuminates the Work Area
- Compact and Ergonomic Design at Only 7-9/16" Long and Weighs Only 3.8 lbs.

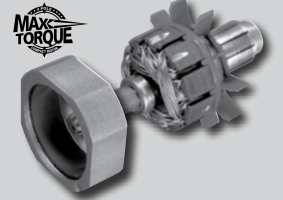


Models  
LXFD01  
LXFD01Z

**LXT**  
LITHIUM-ION

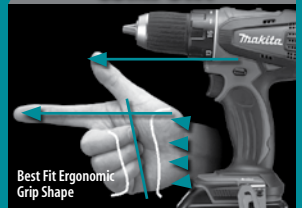
18V POWER.  
12V WEIGHT.™

### POWER



Makita-built 4-pole motor delivers 480 in.lbs. of Max Torque

### COMFORT



Only 3.8 lbs. with redesigned rubberized soft grip

### CONVENIENCE



L.E.D. light with afterglow illuminates the work area

### PERFORMANCE



18V LXT Li-Ion batteries charge in 30 minutes, run longer and deliver 3X more cycles

# POWERFUL, LESS THAN 4 LBS.

# 18V LXT® LI-ION CORDLESS 1/2" DRIVER-DRILL

## LXFD01 / LXFD01Z

### FEATURES & BENEFITS

- Makita-built 4-pole motor delivers 480 in.lbs. of Max Torque and 290 in.lbs. of PTI Torque
- Variable 2-speed (0-400 / 0-1,500 RPM) covers a wide range of drilling and driving applications
- Compact and ergonomic design at only 7-9/16" long and weighs only 3.8 lbs. for reduced operator fatigue
- Built-in L.E.D. light illuminates the work area
- New redesigned rubberized soft grip provides increased comfort on the job
- All metal gear construction provides increased durability
- LXT Lithium-Ion battery and Rapid Optimum Charger produces 430% total lifetime work with 3X more cycles
- 30-Minute Rapid Optimum Charger communicates with the battery's built-in chip throughout the charging process to optimize battery life by actively controlling current, voltage and temperature
- The charger earned the ENERGY STAR® label for meeting the strict energy-efficient guidelines set by the US Environmental Protection Agency (EPA) and US Department of Energy (DOE)
- 3-year warranty on tool and 1-year warranty on battery and charger



### STANDARD EQUIPMENT

- 2 ea. 18V LXT Lithium-Ion battery (BL1830)
  - 30-Minute Rapid Optimum Charger (DC18RA)
  - Tool case (824953-7)
  - Tool belt clip (346034-2)\*
- Model LXFD01Z (tool only) - battery, charger and tool case not included
- \*Included as standard equipment for LXFD01Z

### SPECIFICATIONS

Capacity:	Steel Wood	1/2" 1-1/2"
No load speed		0 - 400, 0 - 1,500 RPM
Max torque		480 in.lbs.
PTI torque		290 in.lbs.
Battery		18V LXT Lithium-Ion
Overall length		7-9/16"
Net weight		3.8 lbs. (w/battery)
Shipping weight:	LXFD01 LXFD01Z	11.0 lbs. 5.0 lbs.
Master carton qty:	LXFD01 LXFD01Z	4 6
UPC code:	LXFD01 LXFD01Z	088381-611619 088381-613262



Model LXFD01Z



Model LXFD01



### OPTIONAL ACCESSORIES

- Optimum automotive charger (DC18SE)
- 17 Pc. Impact drill & driver set (T-00153)
- 28 Pc. Impact drill & driver set (T-00169)
- 38 Pc. Impact drill & driver set (T-01373)
- 62 Pc. Impact drill & driver set (T-01389)

**TRANSCAT**

Visit us at [Transcat.com!](http://Transcat.com!)

35 Vantage Point Drive // Rochester, NY 14624 // Call 1.800.800.5001

All specifications subject to change without prior notice. All models and accessories subject to stock on hand.  
NTF-0411-1 MA-0287-11

**Makita**

Makita U.S.A., 14930 Northam St., La Mirada, CA 92868

"The Makita Teal color is the registered trade dress of Makita Corporation."