

# Makita®

# 18V COMPACT LITHIUM-ION IMPACT DRIVER

MAKITA 4-POLE MOTOR DELIVERS BIG FASTENING POWER IN A COMPACT SIZE

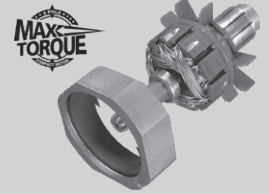
- Makita-built 4-Pole Motor Delivers 1,420 in.lbs. of Max Torque
- Variable Speed (0-2,300 RPM & 0-3,200 IPM) for a Wide Range of Fastening Applications
- Compact Design at only 5-7/16" Long and Weighs only 2.8 lbs. for Reduced Operator Fatigue
- Convenient One-Touch 1/4" Hex Chuck for Quick Bit Changes
- Built-in L.E.D. Light with Afterglow Illuminates the Work Area



Model  
LXDT04CW

COMPACT.  
LITHIUM-ION  
18V POWER.

## POWER



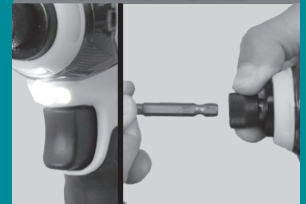
Makita built 4-pole motor delivers  
1,420 in.lbs. of max torque;  
(0-2,300 RPM and 0-3,200 IPM)

## COMFORT



Compact design at only  
5-7/16" long and weighs  
just 2.8 lbs.

## CONVENIENCE



Built-in L.E.D. light with afterglow  
function and one-touch 1/4"  
hex chuck for quick bit changes

## PERFORMANCE



18V Compact Li-Ion batteries  
charge in only 15 minutes

# COMPACT IMPACT.

# 18V COMPACT LITHIUM-ION IMPACT DRIVER

## Model LXDT04CW

### FEATURES & BENEFITS

- Makita-built 4-pole motor delivers 1,420 in.lbs. of Max Torque
- Variable speed (0-2,300 RPM & 0-3,200 IPM) for a wide range of fastening applications
- Compact design at only 5-7/16" long and weighs only 2.8 lbs. for reduced operator fatigue
- Convenient one-touch 1/4" hex chuck for quick bit changes
- New redesigned rubberized soft grip provides increased comfort on the job
- Built-in L.E.D. light with afterglow illuminates the work area
- Makita's proprietary hammer and anvil impact mechanism are manufactured using the best raw materials with the highest quality steel and unique heat hardening process for maximum fastening and driving power
- Makita 18V Compact Lithium-Ion batteries charge in only 15 minutes, 4X faster than 18V Ni-Cd
- Makita 18V Compact Lithium-Ion batteries provide longer run time, 5X lower self-discharge for use any time, and 16 firm-holding contact terminals for constant high power
- 15-Minute Rapid Optimum Charger communicates with the battery's built-in chip throughout the charging process to optimize battery life by actively controlling current, voltage and temperature
- 15-Minute Rapid Optimum Charger has a built-in fan to cool the battery which helps produce more lifetime work
- Accepts Makita 18V LXT Lithium-Ion battery for even longer run time
- The charger earned the ENERGY STAR® label for meeting the strict energy-efficient guidelines set by the US Environmental Protection Agency (EPA) and US Department of Energy (DOE)
- 3-year warranty on tool and 1-year warranty on batteries and charger



### STANDARD EQUIPMENT

- 2 ea. 18V Compact Lithium-Ion Battery (BL1815)
- 1 15-Minute Rapid Optimum Charger (DC18RA)
- Tool Case (824953-7)
- Tool Belt Clip (346449-3)

### SPECIFICATIONS

Hex shank	1/4"
No load speed	0 - 2,300 RPM
Impacts per minute	0 - 3,200 IPM
Max torque	1,420 in.lbs.
Battery	18V Compact Lithium-Ion
Overall length	5-7/16"
Net weight	2.8 lbs. (w/battery)
Shipping weight	12 lbs.
Master carton quantity	4
UPC code:	088381-621458



Model LXDT04CW



### OPTIONAL ACCESSORIES

- Keyless impact driver chuck (763198-1)
- 38-Pc. impact driver & drill bit set (T-01373)
- 70-Pc. impact driver & drill bit set (T-01725)
- Automotive charger (DC18SE)



Makita offers a wide variety of CORDLESS IMPACT DRIVER accessories. For a complete listing, please refer to the Makita General Catalog or visit our website at [makitatools.com](http://makitatools.com), or call 1-800-4MAKITA.

All specifications subject to change without prior notice. All models and accessories subject to stock on hand.  
NTF-0412-2 MA-1161-12



Makita U.S.A., 14930 Northam St., La Mirada, CA 92868

"The Makita Teal color is the registered trade dress of Makita Corporation."