

Papaya

Model number:

105545

Dimensions: 36" x 36" x 72"

Installation:

Door type:



Standard Features:

- 3-piece polystyrene wall with 3 convenient shelves and 2 additional glass shelves
- Textured base, easy to clean, silicone free
- Neo-angle frameless door with hinges and massive handle
- Right or left installation pivot door
- Center Blur tempered glass panels

Product characteristics:

- All-In-One Box Solution
- Textured Floor
- Right or Left Opening

Warranty:

1 Year

Certifications

MAAX products adhere to one or more of the following certifications:



Frame Finish(es):



Chrome (084)

Glass Pattern(s):



Blur (998)

Papaya

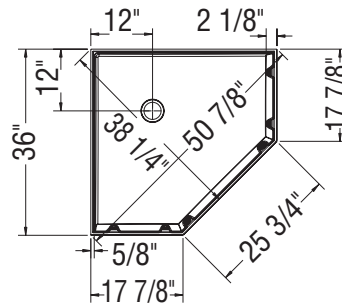
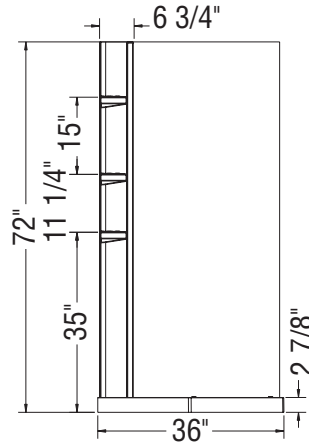
Model number:

105545

Dimensions: 36" x 36" x 72"

Installation:

Door type:



Dimensions:

- x 72 in.
(- x 1829 mm)

Weight:

120 lbs (54.42 kg)

Minimum access:

(mm)

Maximum access:

(mm)

All dimensions are approximate. Structure measurements must be verified against the unit to ensure proper fit.

Project:

Contractor:

Representative:

Date:

Tel:

Notes: