



Just add PEX

The NextGen Boiler is an hydronic appliance that allows for consistent, professional installation for radiant heating applications. Take the complexity out of the mechanical room and replace it with peace of mind for the homeowner. All boiler parts and pieces (expansion tank, circulating pump, air vent, safety relive valve, and heat exchanger) are housed within the unit, for an aesthetically pleasing appearance.



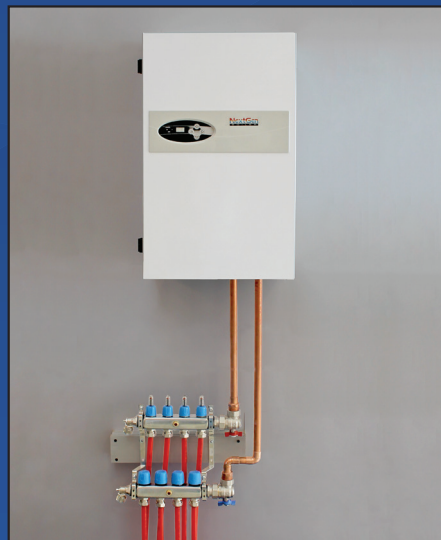
Just add PEX

Which would your customer prefer?



Traditional boiler installation
Labor-intensive science project

vs.



NextGen Boiler installation
Professional comfort system



The NextGen Boiler is the most modern and complete electric boiler on the market.

Engineered into one attractive plug-and-play system, it includes:

- *Stainless steel heat exchanger*
- *Circulating pump*
- *Expansion tank*
- *Air vent*
- *Safety relief valve*
- *User-friendly control panel*

Radiant floor heating has never been easier for the installer.

Just add PEX!

Distributed by:



WH Response, LLC
U.S. National Distributor

www.nextgenboiler.com
(844) 227-9977

info@nextgenboiler.com
6800 Electric Drive
Rockford, MN 55373

www.nextgenboiler.com



NextGen BOILER

Just add PEX

STANDARD FEATURES

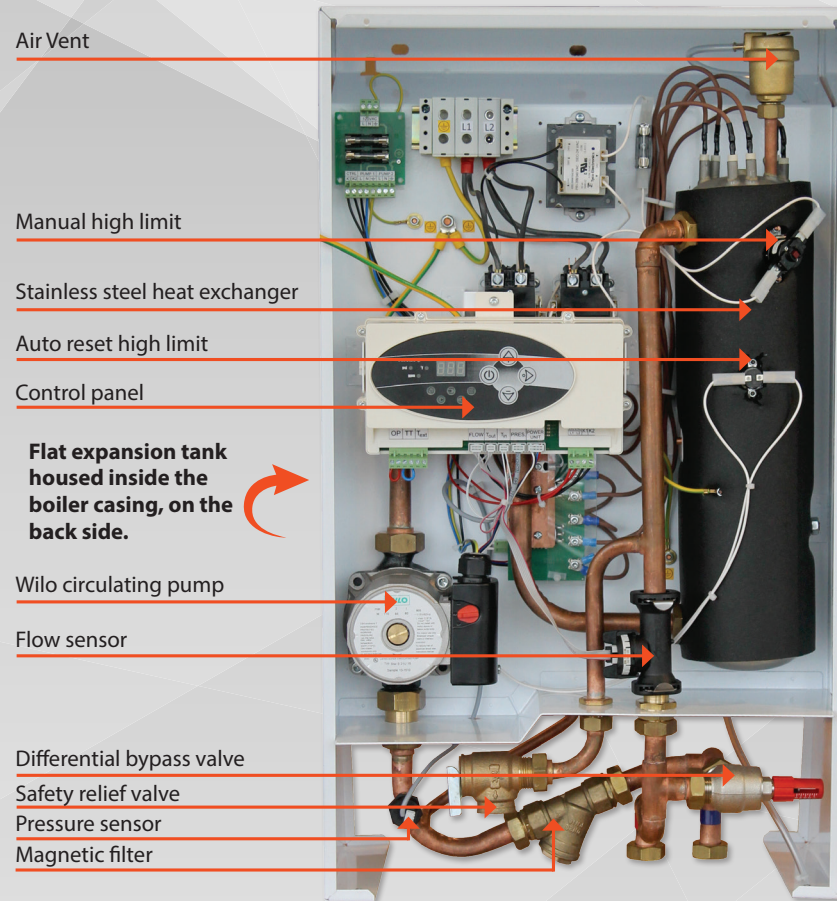
- UL listed
- 4 -14.4 kW output
- 13,652 - 49,147 BTU output
- Modulated three staged heating
- Temperature output 85°-140°F
- Stainless steel heat exchanger
- Wilo Star 21, three speed circulating pump
- Primary/secondary pump relay control
- Flat expansion tank housed inside the boiler casing, on the back side.
- Flat expansion tank housed inside the boiler
- Outdoor compensation/reset
- Redundant safety controls
- Automatic air vent
- Magnetic filter
- Low pressure cut off
- Off-peak capability

CONTROL PANEL FEATURES

- Inlet and outlet temperature readings
- Precise temperature control
- Flow rate reading (GPM)
- Pressure reading (psi)
- BTU output reading
- Fault code reading
- Pump exercise mode

WARRANTY INFORMATION

Kospel SA, warrants and WH Response LLC carries out, the NextGen Boiler to the original purchaser to be free from manufacturing defects in materials and workmanship for a period of 24 months from the date of sale.



NextGen Boiler: comparison to the competition

| | NextGen | Competitors | | |
|--|-----------------|-------------------|--------------|-----------------|
| | | 1 | 2 | 3 |
| Circulating Pump - Plumbed | ✓ | | | |
| Circulator Post/Purge Operation | ✓ | | ✓ | |
| Circulating Pump Exerciser | ✓ | | | |
| Circulating Pump Switch with Auxiliary Relay | ✓ | | ✓ | ✓ |
| Expansion Tank - Plumbed | ✓ | | | |
| Air Vent - Plumbed | ✓ | | | |
| 30 psi Relief Valve - Plumbed | ✓ | | | ✓ |
| Pressure Differential Valve | ✓ | | | |
| Outdoor Compensation/Reset | ✓ | | ✓ upgrade | ✓ |
| Digital SWT Controller | ✓ | | | ✓ |
| External Diagnostic Lights | ✓ | | ✓ | ✓ |
| Modulation | ✓ | ✓ | ✓ | ✓ |
| Digital Temperature Gauge | ✓ | | | |
| Digital Pressure Gauge | ✓ | | | |
| Off Peak Connections | ✓ | ✓ | ✓ | ✓ |
| Labor Savings | ✓ | | | |
| Heat Exchanger Material | Stainless Steel | Composite Plastic | Rolled Steel | Stainless Steel |

Disclaimer: While WH Response LLC strives to make this information accurate, it can make no claims or guarantees of accuracy and expressly disclaims liability for errors and omissions in the comparisons.

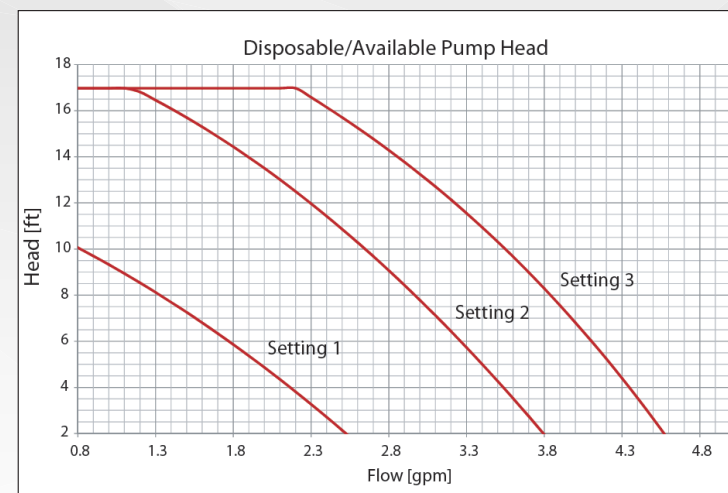
WHY THE NEXTGEN BOILER?

While some radiant heating installations look like science projects gone wrong, the NextGen Boiler achieves a professional installation each and every time due to its innovative and compact design. The time saved on installation labor is attractive to both the contractor and the homeowner. The NextGen Boiler is manufactured to the highest standards and will exceed expectations for many years to come.



NextGen Boiler Ratings and Specifications

| Model number | NextGen - 4 | NextGen - 6 | NextGen - 8 | NextGen - 12 | NextGen - 14.4 |
|-----------------------------|--------------------------|----------------------|----------------------|-----------------------|-------------------------|
| Boiler Rated Power | 4 kW 13,652 Btu/h | 6 kW 20,478 Btu/h | 8 kW 27,304 Btu/h | 12 kW 40,956 Btu/h | 14.4 kW 49,147 Btu/h |
| Voltage | 240 V | 240 V | 240 V | 240 V | 240 V |
| Related Current | 16.66 A | 25.0 A | 33.3 A | 50.0 A | 60 A |
| Breaker Quantity - Amps | 1 @ 30 amp | 1 @ 40 amp | 1 @ 40 amp | 2 @ 40 amp | 2 @ 40 amp |
| Number of Heating Elements | 3 | 3 | 3 | 3 | 3 |
| Element Resistance / Each | 43.3 Ω | 28.8 Ω | 21.6 Ω | 14.4 Ω | 12.0 Ω |
| Operating Temperature Range | 85°-140° F | | | | |
| Inlet / Outlet Pipe Thread | G 3/4" (internal thread) | | | | |
| Expansion Vessel (14 psi.) | 1.6 Gallons | | | | |
| Safety relief valve rating | 30 psi | | | | |
| Maximum pressure | 30 psi | | | | |
| Minimum pressure | 7 psi | | | | |
| Weight | 68.5 Lbs. | | | | |
| Dimensions L x W x D | 28" x 17" x 9 - 7/8" | | | | |
| Minimum Flow Rate gpm | 1.1 | | 1.32 | | |



| Circulating pump - Wilo Star S 21 U 15.3 speed | |
|--|------------|
| Circulating pump voltage | 120V, 60Hz |
| Circulating pump Amps | .97 |
| Speeds | 3 speed |
| Fuse rating | 1.0 amp |

WH Response, LLC
U.S. National Distributor

www.nextgenboiler.com
(844) 227-9977

info@nextgenboiler.com
6800 Electric Drive • Rockford, MN 55373