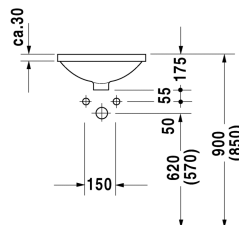
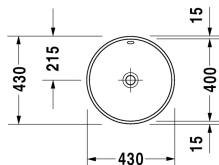


Architec Vanity basin # 0468400000

| < Ø 400 mm > |



Vanity basin	Dimension	Weight	Order number
undercounter basin, with overflow, without tap platform, underneath glazed, fixings for installation in wooden consoles included, Ø 400 mm			
Colors			
00 White Alpin			
Variant			
☒	Ø 400 mm	6.500 kilogram	0468400000
Infobox			
Measurements of undercounter models represent interior measurements			
Sanitary ceramics with the special WonderGliss surface finish will remain clean and attractive-looking for a long time to come. When ordering WonderGliss please add a "1" as eleventh digit to the model number.			
Accessory			
Fixing for stone countertops, (with the exception of # 046651)		0.200 kilogram	005028
Push-open waste for washbasins with overflow		0.400 kilogram	005052
Suitable products			
Console for undercounter basin f-bonded 1 console with two cut-outs, Width min. see ordering information, Width max 2000 mm, price per section of 100 mm, basic price till 800 mm, for undercounter basin f-bonded, 550 mm		550 mm	F0091C
Console for undercounter basin f-bonded 1 console with one cut-out, Width min. see ordering information, Width max 2000 mm, price per section of 100 mm, basic price till 800 mm, for undercounter basin f-bonded, 550 mm		550 mm	F0090C
Console + back panel for undercounter basin f-bonded 1 console with one cut-out, Width min. 800 mm, Width max. 2000 mm, price per section of 100 mm, basic price till 800 mm, for back-to-wall, 565 mm		565 mm	DL050C

Architec Vanity basin # 0468400000

| < Ø 400 mm > |

Console + back panel for undercounter basin f-bonded 1 console with two cut-outs, Width min. 800 mm, Width max. 2000 mm, price per section of 100 mm, basic price till 800 mm, for back-to-wall, 565 mm	565 mm	DL053C
Console for undercounter basin f-bonded 1 console with one cut-out, Width min. see ordering information, Width max 2000 mm, price per section of 100 mm, basic price till 800 mm, for back-to-wall, 565 mm	565 mm	DL030C
Console for undercounter basin f-bonded 1 console with two cut-outs, Width min. see ordering information, Width max 2000 mm, price per section of 100 mm, basic price till 800 mm, for back-to-wall, 565 mm	565 mm	DL033C

All drawings contain the necessary measurements which are subject to standard tolerances. They are stated in mm and are non-binding. Exact measurements, in particular for customised installation scenarios, can only be taken from the finished ceramic piece.