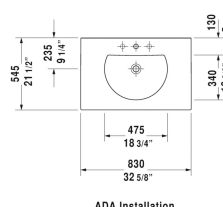
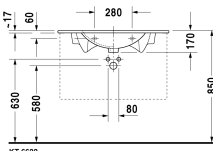
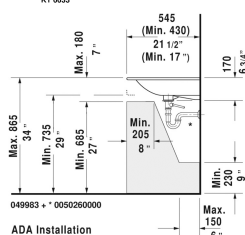
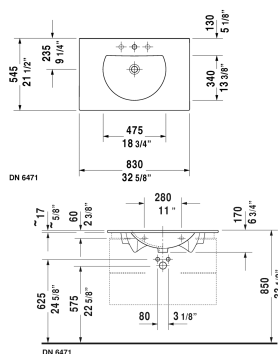
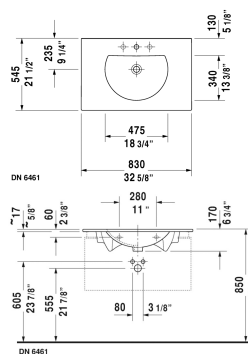


Darling New Furniture washbasin # 0499830000 / 0499830030

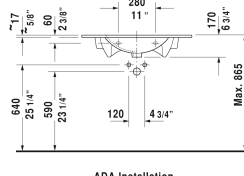
< 32 5/8" Inch >



ADA Installation



ADA Installation



ADA Installation

Furniture washbasin	Dimension	Weight	Order number
with overflow, with faucet deck, wall-mounted, 32 5/8" Inch			
Colors			
00 White			
Variant			
●	32 5/8" x 21 1/2" Inch	47 lb	0499830000
● ● ●	32 5/8" x 21 1/2" Inch	47 lb	0499830030
Infobox			
For vanity units the space-saving siphon is recommended			
Sanitary ceramics with the special WonderGliss surface finish will remain clean and attractive-looking for a long time to come. When ordering WonderGliss please add a "1" as eleventh digit to the model number.			
Space-saving siphon	1 1/4" Inch	0.9 lb	005076
Suitable products			

Darling New Furniture washbasin  # 0499830000 /
0499830030

| < 32 5/8" Inch > |

Vanity unit wall-mounted 1 pull-out compartment, compartment consists of glass dividers and 2 boxes (small/large), for Darling New # 049983, 31 1/2" x 20 1/2" Inch	31 1/2" x 20 1/2" Inch	XL6062
Vanity unit wall-mounted 1 pull-out compartment, for Darling New # 049983, 32 1/4" x 21 1/8" Inch	32 1/4" x 21 1/8" Inch	LC6162
Vanity unit wall-mounted with 2 drawers, upper drawer including cut-out for siphon and siphon cover, for Darling New # 049983, 32 1/4" x 21 1/8" Inch	32 1/4" x 21 1/8" Inch	LC6262
Vanity unit floorstanding 2 pull-out compartments, upper drawer including cut-out for siphon and siphon cover, for Darling New # 049983, 32 1/4" x 21 1/8" Inch	32 1/4" x 21 1/8" Inch	LC6606

All drawings contain the necessary measurements which are subject to standard tolerances. They are stated in inch & mm and are non-binding. Exact measurements, in particular for customized installation scenarios, can only be taken from the finished ceramic piece.