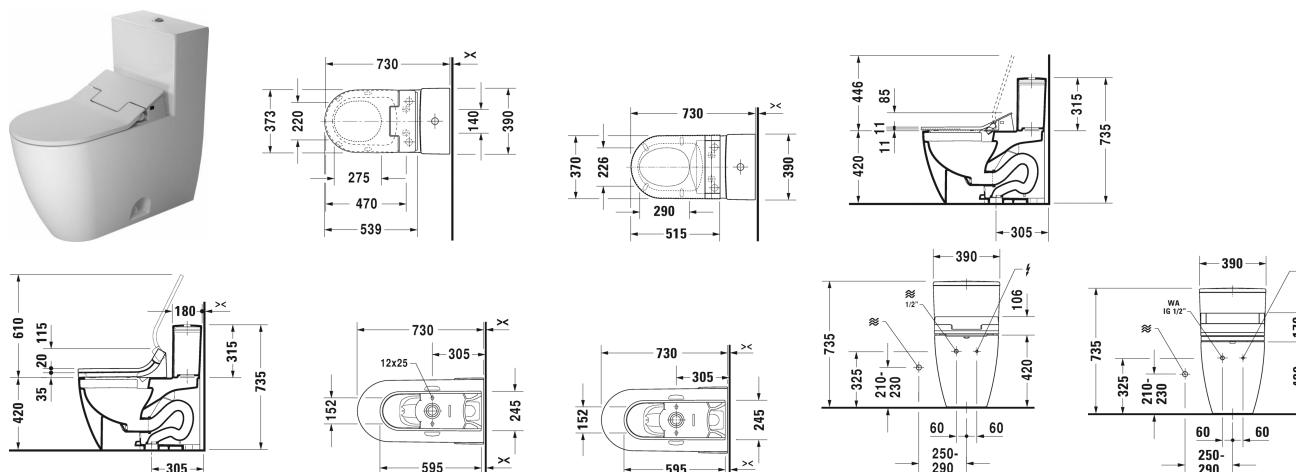


ME by Starck One-piece toilet Duravit Rimless for SensoWash® # 217351..01 / 217351..85

| < 360 mm > |



One-piece toilet Duravit Rimless for SensoWash®	Dimension	Weight	Order number
rimless, connecting elements for SensoWash with concealed connections included, US-version, elongated with syphonic jet action, 305 mm/12" rough-in, only in combination with SensoWash, vertical outlet			
Colors			
00 White Alpin 20 HygieneGlaze (an antibacterial ceramic glaze that provides almost indefinite effectiveness)			
Variant			
♣ 1,32/0,92 gpf (5/3,5 lpf), with Dual Flush mechanism	360 x 730 mm	69.500 kilogram	217351..01
♣ 1,28 gpf (4,8 lpf), with Single Flush piston valve, top flush	360 x 730 mm	69.500 kilogram	217351..85
Accessory			
Mounting set for One-piece and Two-piece toilets, 1/2", ASIA-version		0.480 kilogram	001416
Mounting set for One-piece and Two-piece toilets, Outflow 3/8" - external thread, Wall Connection 1/2" - internal thread, 1/2", US-version		0.480 kilogram	001417
Suitable products			
SensoWash® Starck C shower toilet seat for ME by Starck, Starck 2, Starck 3 and Darling New* with concealed connections, Remote control included, Electromotive actuated seat and lid, Rear-, Lady- and Comfortwash, individual adjustment of water-, air- and seat temperature as well as spray wand position and water spray intensity, Self-cleaning spray wand, 2 individually programmable user profiles, Night light, Quick release: easy seat unit removal, on / off-button, 370 x 515 mm	370 x 515 mm		610001

ME by Starck One-piece toilet Duravit Rimless for SensoWash® # 217351..01 / 217351..85

|< 360 mm >|

SensoWash® Slim shower toilet seat for ME by Starck, Starck 2, Starck 3 and Darling New* with concealed connections, Remote control included, Locking function via remote control, Rear-, Lady- and Comfortwash, Self-cleaning spray wand, with soft closure, Night light, Seat and lid easy removable one-handed, Automatic drainage in periods of prologed disuse, on / off-button, 373 x 539 mm

373 x 539 mm

611000

All drawings contain the necessary measurements which are subject to standard tolerances. They are stated in mm and are non-binding. Exact measurements, in particular for customised installation scenarios, can only be taken from the finished ceramic piece.