

Features:

GHE21519

Included Components:

- Combination GHE21519
- Bowl GHE21872
- Tank GHE28570

- Vitreous China
- 12" Rough-in
- 3" flush valve for maximum water force
- Fluidmaster® 400A Fill Valve
- Extra-Large Dual fed siphon jets for high power bowl clearing
- 100% glazed, 2" large trapway for clog-free waste removal
- Double nut, multi-point tank-to-bowl mounting system for tool-free installation
- Color matched metal tank lever
- Compact design fits in round front space
- Toilet seat is not included



Technical Information:

Configuration	Two-piece, ErgoHeight™ ADA Compact Elongated Toilet
Water per Flush	1.28 gpf (4.8 Lpf)
Rough-In	12"
Height	29 ³ / ₄ "
Width	18 ¹ / ₄ "
Depth	26 ⁷ / ₈ "
Trapway	2"
Large Water Surface	8 ¹¹ / ₁₆ " x 6 ⁵ / ₁₆ "
Shipping weight Bowl	44.4 lbs
Shipping weight Tank	28.1 lbs

Accessories: (to be purchased separately)

- N/A

Other Tank Options: (Bowl to be purchased separately)

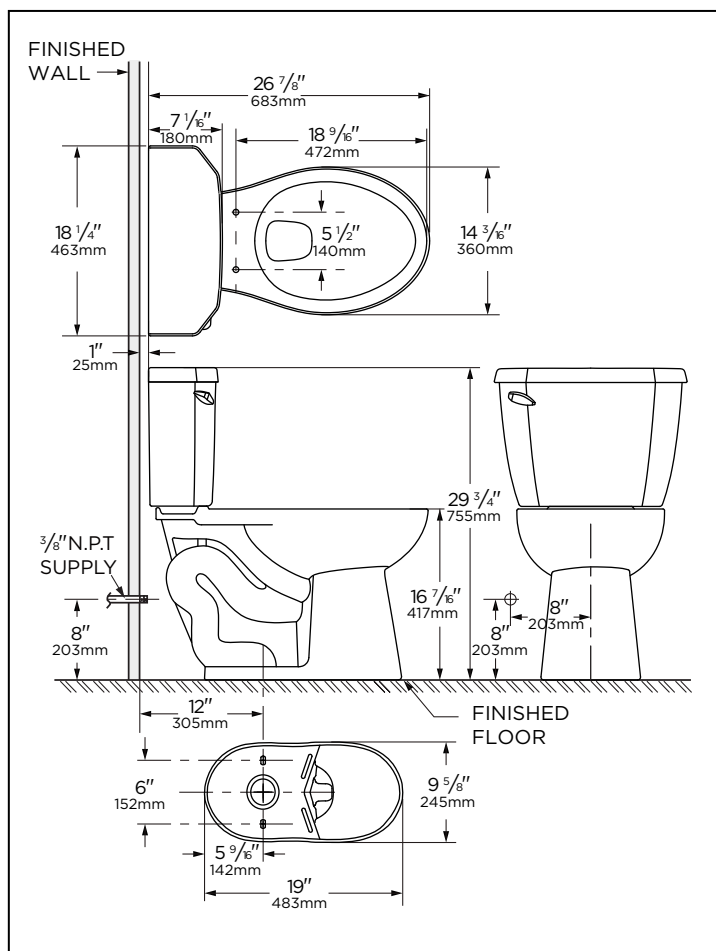
- Tank with Right Hand Lever GHE2857097

Available Colors:

- White
- Other: Refer to Price Book for additional colors/finishes

Warranty:

- Limited Lifetime on Vitreous China, refer to the website for more details.



HIGH EFFICIENCY TOILET

HET



NOTES: All dimensions are in inches and millimeters. Illustrations may not be drawn to scale.

IMPORTANT:

Dimensions of fixtures are nominal and may vary within the range of tolerances established by ASME standard A 112.19.2. THIS FIXTURE QUALIFIES ACCORDING TO ASME TEST PROCEDURES AS A HIGH EFFICIENCY WATER CLOSET WITH AN AVERAGE CONSUMPTION OF 1.28 gpf (4.8 Lpf) OR LESS.