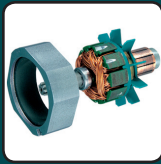




12v max CXT™ Lithium-Ion Cordless 3-3/8" Circular Saw Kit Model SH02R1

Slide Style Battery and Improved Ergonomic Grip



SPEED

Makita-built motor delivers 1,500 RPM for faster cutting



CAPACITY

3-3/8" blade delivers a maximum cutting depth of 1" for a wide range of cutting applications



APPLICATIONS

Cuts plywood, MDF, pegboard, particleboard, melamine, drywall and more



COMFORT

Ergonomically designed handle with rubberized soft grip provides increased comfort



*Also available as bare tool
Model SH02Z



FEATURES

- Makita-built motor delivers 1,500 RPM for faster cutting
- 3-3/8" blade delivers a maximum cutting depth of 1" for a wide range of cutting applications
- Adjustable cutting depth from 1" at 90° and 5/8" at 45°
- Tilting base for bevel cuts from 0° - 45°
- Cuts plywood, MDF, pegboard, particleboard, melamine, drywall and more
- Weighs only 3.5 lbs. with battery for reduced operator fatigue
- Compact design at 12-3/8" long
- Built-in dust blower helps keep the line of cut free of debris for increased accuracy
- Ergonomically designed handle with rubberized soft grip provides increased comfort
- Blade wrench is attached to saw for fast and convenient blade changing
- Battery Protection Circuit protects against overloading, over-discharging and over-heating

SPECIFICATIONS

Blade Diameter	3-3/8"
Arbor	15mm
No load speed	1,500 RPM
Max cutting capacity	1" at 90° - 5/8" at 45°
Battery	12v Max CXT™ Lithium-Ion
Overall length	12-3/8"
Net weight (with battery)	3.5 lbs.
UPC Code (kit)	088381-805322
UPC Code (bare tool)	088381-805315

STANDARD EQUIPMENT

- 12V Max CXT™ 3-3/8" Circular Saw - Tool Only (SH02Z)
- 12V Max CXT™ Lithium-Ion Charger (DC10WD)
- (2) 12V Max CXT™ Lithium-Ion 2.0Ah Battery (BL1021B)
- 3-3/8" 20T Carbide-Tipped Circular Saw Blade, General Purpose (A-95021)
- Tool case

OPTIONAL ACCESSORIES

- 12V Max CXT™ Lithium-Ion 4.0Ah Battery (BL1041B)
- 3-3/8" 50T Steel Circular Saw Blade, General Purpose (721003-8)
- 3-3/8" 24T Carbide-Tipped Circular Saw Blade, General Purpose (721005-A)

All specifications subject to change without prior notice. All models and accessories subject to stock on hand.
The Makita Teal Color is the trade dress of Makita Corporation and is protected under common law and registered with the U.S. Patent and Trademark Office

Makita offers a wide variety of accessories. For a complete listing, please refer to the Makita General Catalog or visit our website at makitatools.com, or call 1-800-4MAKITA.