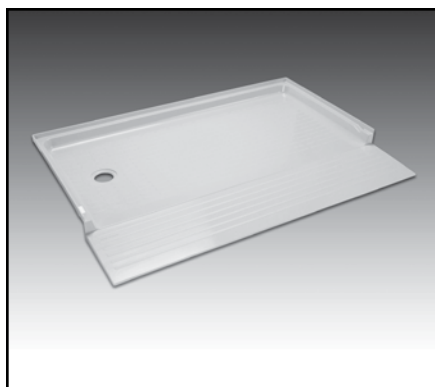




SEE PAGES 2-5 FOR A LIST OF ACCESSORIES!



**Design features:**

- Produced from high-grade, reinforced, molded fiberglass for optimum strength and impact resistance using matched metal molds under heat and pressure.
- Ideal for new or remodel projects...fits DURAWALL® Shower Walls (see Accessories section) as well as ceramic tile or preformed wall kit.
- Fits 60" wide by 30" deep alcove
- Drain hole is offset 8-1/2" x 15" for connection to 2" DWV piping
- 360.100 Entry Ramp (order separately) creates curbless entry and exit for wheelchairs and walkers.
- Slip resistant surface
- Optional drain kit is available for connecting to existing 1-1/2" bathtub DWV line.
- Available in both LH and RH drain locations
- Available in white or bone
- Smooth, colorfast semi-gloss finish, resists scuffs.
- Mold and mildew-resistant...easy to clean
- Available STYLEMATE® shower enclosures feature tempered safety glass and a range of finishes (see Accessories section).

**Code Accepted**

- Americans with Disabilities Act (ADA)
- Code of Federal Regulations: July 1, 1997 (ADA)
- American Society of Testing & Materials (ASTM)-D635 Flammability, E84 Flame Spread, E165.75 Fire Retardancy

**Specifications**

Model	Description	Drain Location	Fits Alcove	UPC
<b>Barrier-Free Shower Floor</b>				
360R	White	RH	30" x 60"	6 71031 00271 6
360RBN	Bone	RH	30" x 60"	6 71031 00272 3
360L	White	LH	30" x 60"	6 71031 00273 0
360LBN	Bone	LH	30" x 60"	6 71031 00274 7

**Entry Ramp (Order separately) 12" deep x 60" wide**

360.100	White	—	—	6 71031 00275 4
360.100BN	Bone	—	—	6 71031 00276 1

**General:** Furnish and install as shown on plans, barrier-free DURABASE® Shower Floor Model 360 and Entry Ramp model \_\_\_\_\_ (360.100, 360.100BN) as manufactured by E.L. Mustee & Sons, Inc. Shower floor to be one-piece, molded fiberglass, using matched metal molds under extreme heat and pressure. Surface to be slip-resistant design that does not interfere with flow of water. Size: 30" x 60". Shoulder will be not less than 3-1/16" high or less than 1-1/4" wide. Tiling flange will extend not less than 1" higher than shoulder. Shower floors shall not have curb used in conjunction with 12" x 60" entry ramp per ADA requirements. Drain available on right or left side, offset 8-1/2" x 15". Shall meet ANSI Specification Z 124.1.2 1990. Color \_\_\_\_\_ (White, Bone). Install in compliance with local codes.

**General:** Furnish and install as shown on plans Shower Floor Entry Ramp model: \_\_\_\_\_ as manufactured by E.L. Mustee & Sons, Inc. Ramp to be one piece, molded fiberglass made with matched metal molds. Slip resistant surface. Trimmable to accommodate for a nearby toilet or other structure. Size 12" x 60". Color: \_\_\_\_\_ (White, Bone)

