

Elkay Crosstown Stainless Steel Farmhouse Sink with Interchangeable Apron

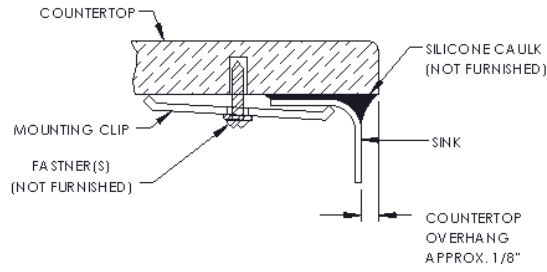
Installation Instructions



ATTENTION INSTALLER: CAREFULLY READ THESE INSTRUCTIONS BEFORE YOU BEGIN

- 1) ***RECOMMEND THAT UNDERMOUNT SINKS SHOULD BE INSTALLED BY A PROFESSIONAL EXPERIENCED INSTALLER.***
- 2) WARNING: DUE TO THE CUSTOM NATURE OF THIS TYPE OF INSTALLATION, NO CUTOUT TEMPLATE IS INCLUDED. RECOMMEND PROVIDING THE CABINET MAKER WITH THE ACTUAL SINK TO BE INSTALLED PRIOR TO CABINET FABRICATION. IT IS RECOMMENDED THAT THE SINK IS INSTALLED WITH A 1/8" OVERHANG AS ILLUSTRATED IN **FIGURE 1**. IT IS FURTHER RECOMMENDED THAT THE INSTALLER(S) DISCUSS THIS WITH THE CUSTOMER AND AGREE THAT THIS FINISHED APPEARANCE IS THE DESIRED EFFECT. NOT RESPONSIBLE FOR IMPROPER SINK OR COUNTERTOP INSTALLATIONS.
- 3) FOR REFERENCE, **FIGURE 2** PROVIDES DIMENSIONAL INFORMATION TO ESTABLISH THE CUTOUT POSITION IN RELATIONSHIP TO THE FRONT OF THE CABINET.
- 4) OPTIONAL: SINK CAN BE SECURED TO THE FRONT OF THE CABINET BY DRIVING FASTENERS (NOT SUPPLIED) THROUGH THE COUNTERSUNK HOLES, PROVIDED ON THE SINK, INTO THE CABINET FRONT AS ILLUSTRATED IN **FIGURE 3**.
- 5) PROPER INSTALLATION REQUIRES A COORDINATED EFFORT INCLUDING ADVANCED DIALOG BETWEEN THE DESIGNER (OR CUSTOMER), THE CABINET MAKER, THE COUNTERTOP FABRICATOR AND THE SINK INSTALLER DURING THE DESIGN AND INSTALLATION PHASE.
- 6) UNDERMOUNT SINKS SHOULD ONLY BE FASTENED TO A SOLID SURFACE COUNTERTOP (I.E. GRANITE/CORIAN®/SILESTONE®).
- 7) WHEN SINK AND CABINET ARE CORRECTLY SIZED THE SINK CAN REST ON SIDE WALLS OF CABINET AND NOT REQUIRE SIDE CLIPS. MATERIAL MAY BE REQUIRED TO BE REMOVED FROM CABINET TO LEVEL SINK BENEATH COUNTER.
- 8) NOT RESPONSIBLE FOR SINK OR COUNTERTOP IF DAMAGED DURING INSTALLATION.
- 9) METAL EDGES MAY BE SHARP - USE CAUTION WHEN HANDLING.
- 10) FOLLOW ALL LOCAL PLUMBING AND BUILDING CODES.
- 11) INSPECT SINK FOR DAMAGE PRIOR TO BEGINNING INSTALLATION.

INSTALLATION PROFILES



**1/8" COUNTERTOP OVERHANG
FIGURE 1**

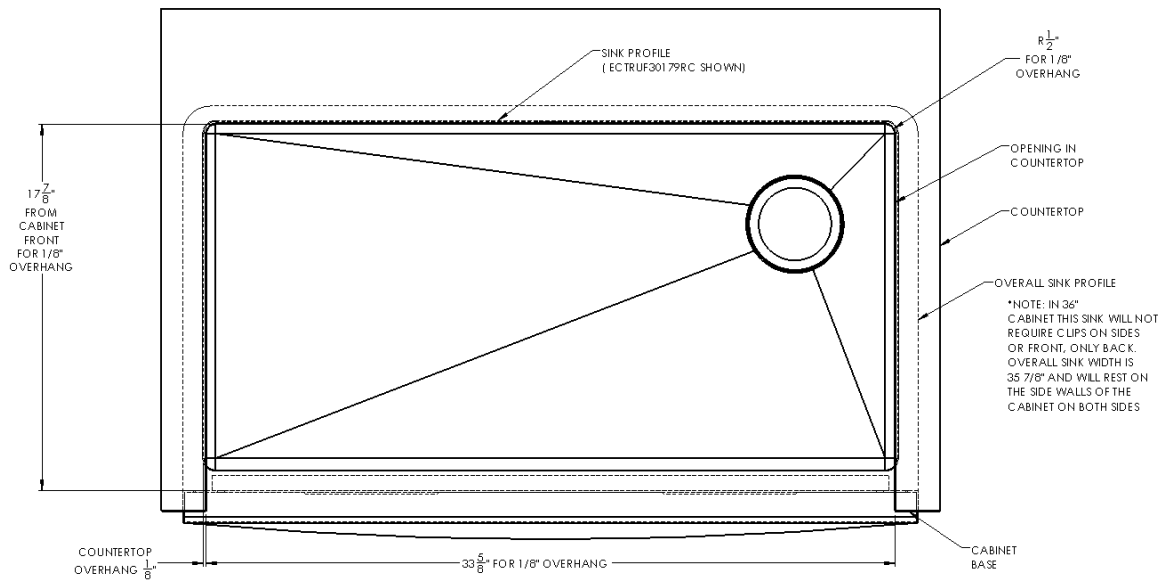


FIGURE 2

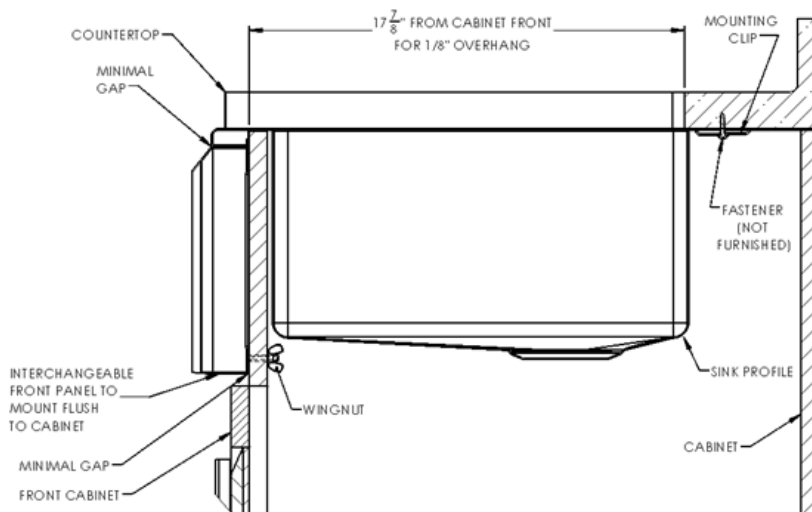


FIGURE 3

Apron Installation



INSTALL SINK; USING THE OBLONG SLOTS AS A TEMPLATE, CUT THROUGH THE CABINET FRONT FOR PROPER PANEL INSTALLATION...USE OTHER COUNTERSUNK HOLES AS NEEDED TO ATTACH SINK TO CABINET SECURELY.



INSTALL APRON PANEL BY TILTING AND INSERTING THE TABS INTO THEIR UNDER-LEDGE SLOTS



ALIGN WELDED-ON STUDS TO PASS THROUGH CABINET FRONT VIA CUT-THROUGH SLOTS



ONCE THE TABS ARE IN AND THE STUDS ARE THROUGH, THE APRON PANEL SHOULD LIE FLAT IN THE VERTICAL POSITION. OPEN CABINET DOORS AND REACH AROUND TO THE BACKSIDE OF THE APRON TO INSTALL THE PROVIDED WING NUTS ONTO THE STUD ON BOTH SIDES.

View installation video HERE: <https://www.youtube.com/watch?v=yYsEUGNEwuU>