

### DESCRIPTION

- Includes aromatherapy handshower, hose and magnetic dock that matches the finish of the handshower
- Metal shower ball
- Assembled with two check valves for backflow prevention
- Various finishes identified by suffix
- 1/2" IPS connection

### OPERATION

- Push button feature to change six showering spray settings: Massage, Relaxing Massage, Wide Coverage, Downpour, Intensify, and Rinse
- Four aromatherapy dilution settings:
  - O : No Fragrance
  - III : High Fragrance
  - II : Medium Fragrance
  - I : Low Fragrance

### FLOW

- Designed to deliver 1.75 gpm (6.6 L/min) max. at 80 psi

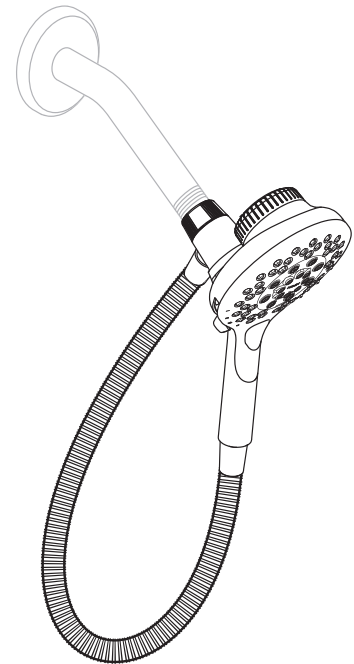
### STANDARDS

- Designed and manufactured to comply with the applicable requirements of WaterSense®, ASME A112.18.1/CSA B-125.1, and all applicable specifications referenced therein
- Products marked with 1.75 gpm are compliant with the California water efficiency regulations

### WARRANTY

- Lifetime limited warranty against material or manufacturing defects to the original homeowner
- 10 year limited warranty when used in a multifamily installation
- 5 year limited warranty when used in a commercial installation
- Warranty only valid with use of INLY™ aromatherapy shower capsules

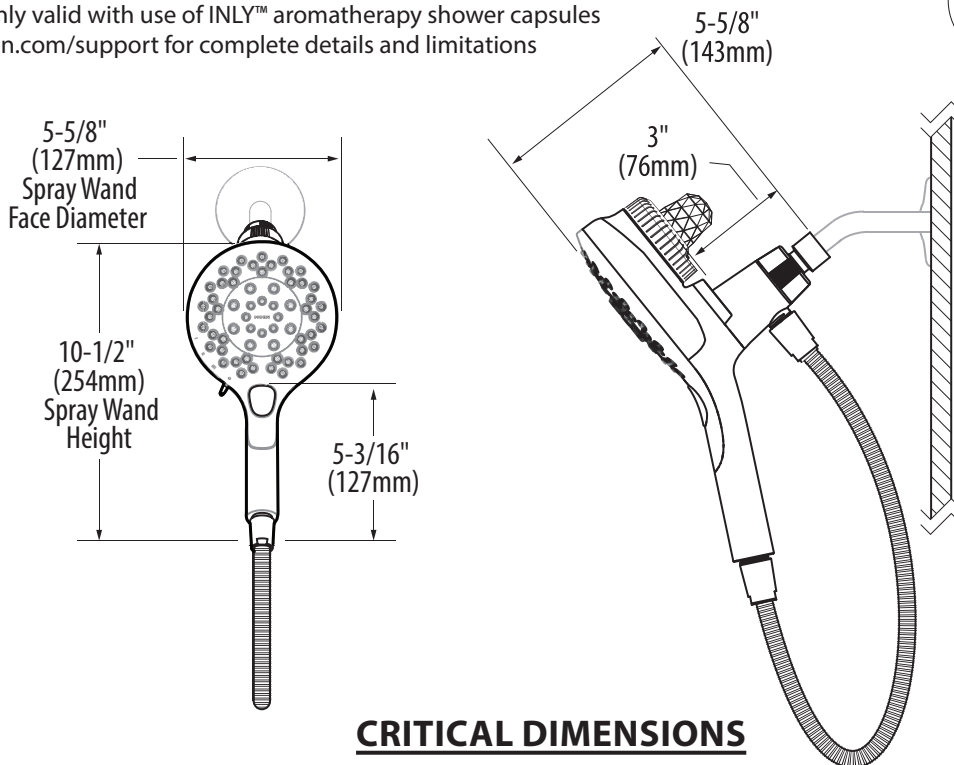
Visit [www.moen.com/support](http://www.moen.com/support) for complete details and limitations



## Aromatherapy Handshower

For North America markets

Models: 208H2 series



### CRITICAL DIMENSIONS

(DO NOT SCALE)



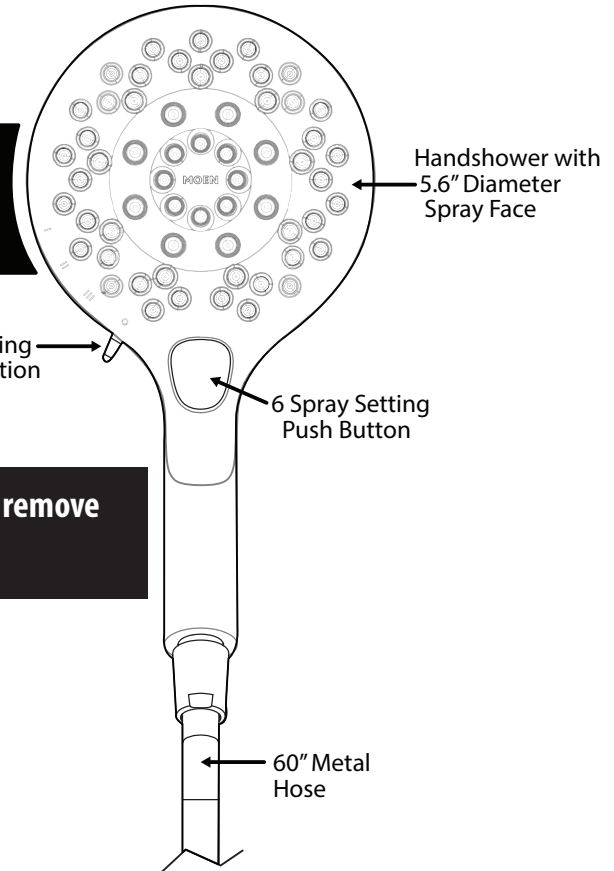
The dilution lever will not move off the "o" position without a shower capsule in position.



4 Setting Scent Dilution Lever



Dilution lever must be in the "o" position to remove a shower capsule.



INLY™ Technology:  
Aromatherapy  
Infusion Dial

